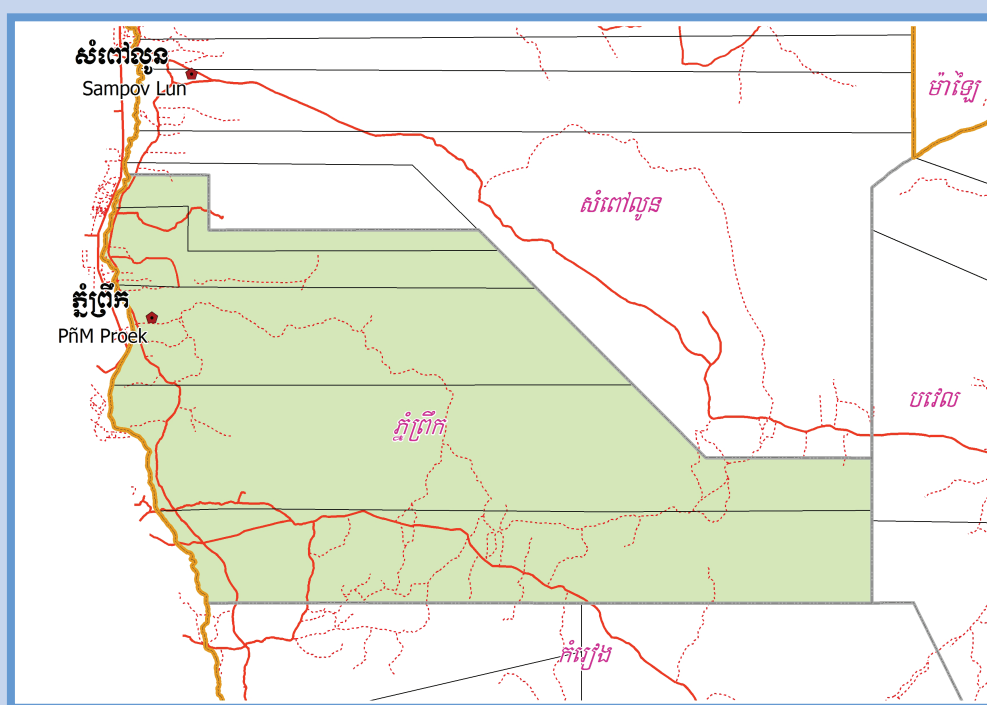


KINGDOM OF CAMBODIA
Nation Religion King



**National Committee for Sub-National
Democratic Development (NCDD)**



PHNUM PROEK DISTRICT DATA BOOK 2009

District Code Nr: 211
Battambang Province

October 2009

Phnum Proek District Data Book 2009

District Code Nr: 211

Battambang Province

Table of Contents

List of Abbreviations	i
Glossary.....	ii
Preface	vi
Introduction	vii
SECTION A: GEOGRAPHY	1
1 Administration and Infrastructure.....	3
2 Land Use and Natural Resources.....	5
3 Geography	7
3.1 Land Area	7
3.2 Distances between Offices	7
SECTION B: DISTRICT PROFILE	9
1 General Information	11
1.1 Population of the District.....	11
1.2 Occupations	12
1.3 Property	14
2 Infrastructure and Economy.....	16
2.1 Roads in meters over 3 years.....	16
2.2 Sewerage Pipes in meters over 3 years.....	16
2.3 Drainage and Bridges	16
2.4 Services in the District	16
2.5 Agriculture.....	17
3 Social Aspects	27
3.1 Education	27
3.2 Health.....	33
3.3 Water and Sanitation	35
3.4 Vulnerable groups.....	39
3.5 Migration	41
4 Natural Resources and Environment (NRE).....	42
4.1 Families involved with NRE issues over 3 years	42
4.2 Percentage of Families involved with Natural Resource issues, by Commune, for 2008	43
4.3 Percentage Houses with access to Garbage collection and Families affected by environmental Pollution, by Commune, for 2008	43
4.4 Percentage Families using chemical Fertilizer and chemical Pesticides, by Commune, for 2008 ..	43
5 Administration and Security	44

5.1	Birth Registration across 3 years.....	44
5.2	Number of unregistered Infants born in 2008, by Commune	44
5.3	Registered criminal Cases over 3 years	44
5.4	Registered criminal Cases per 10,000 people, by Commune, for 2008.....	44
5.5	Number of registered Land Disputes, by Commune, in 2008	44
6	Gender	45
6.1	Registered Domestic Violence over 3 years.....	45
6.2	Percentage of registered cases of Families experiencing domestic Violence, by Commune, in 2008	45
6.3	Women's involvement over 3 years.....	45
6.4	Percentage of Female Participants in Civil Society and of 18-60 year women with uncertain Jobs, by Commune, in 2008	46
6.5	Female-headed Households over 3 years.....	46
6.6	Percentage female-headed Households and with Children of less than 5 years old, by Commune, in 2008	46
7	Indigenous People in the District	47
7.1	Ethnic Minorities in the District over 3 years.....	47
7.2	Other Minorities in the District over 3 years.....	47
	SECTION C: PLANS AND PROJECTS	49
8	Priorities and Plans	51
8.1	Priorities of Commune Councils for 2009 in the District by Sector	51
8.2	Temporary Agreements by Commune, for 2009	54
8.3	Outputs, estimated and actual costs of C/S Fund Projects between 2005 and 2008, by Commune	64
8.4	Total Expenditure on C/S Fund Projects by sector and commune between 2005 and 2008.....	65
8.5	Actual 2009 C/S Fund projects by Commune	65
9	District level Projects from 2006 to 2009	66
9.1	District Initiative Infrastructure Projects from 2006 to 2009	66
9.2	District Initiative Service Projects from 2006 to 2009	66
9.3	Inter Commune Council Projects in 2008 and 2009	67
9.4	Other Projects in 2008 and 2009	67
	SECTION D: SERVICES AND ORGANIZATIONS	69
10	Infrastructure.....	71
10.1	Length of and Expenditure on Roads in 2008, by District	71
10.2	Scale of and Expenditure on Irrigation in 2008, by District.....	72
10.3	Power Supply in 2008, by District	73
11	Health Facilities.....	74

11.1 Health Facilities in the Province, by Operational District.....	74
11.2 Health Facilities and Staff in the province, by Operational District.....	75
11.3 Deliveries in 2007 in the Province, by Operational District.....	77
12 Education	78
12.1 Schools, Classes, Students, Staff, for for all levels, for 2007/2008 by District.....	78
12.2 Characteristics of Schools and School Principals for 2007/2008 by Commune	79
12.3 Enrolment by Level of Education, 2006/2007 by Commune	79
12.4 Enrolment by Level of Education, 2007/2008 by Commune	79
12.5 Aspects of Enrolment for 2007/2008 by Commune.....	80
12.6 School Buildings for all schools in the District for 2007/2008, by Commune	80
12.7 Conditions of Classrooms and Existence of Separate School Office and Library, by Commune	80
12.8 Community Participation and Financing across all schools in the District for 2007/2008 by Commune	81
12.9 Percentage Student Flow Rates and Graduation by level 2006/2007, by Commune	81
13 Staff and Resources at the District	82
13.1 District Councilors elected in 2009	82
13.2 Committees of the Council.....	82
13.3 Board of Governors.....	83
13.4 Offices under Sala Krong, Sala Srok and Sala Khan	83
13.5 Municipality/District/Khan line offices.....	83
13.6 Properties and Equipment of District Administration	84
13.7 Registered Revenue of the District Administration in 2008	85
13.8 Services in the District	85
13.9 Civil Society Organizations active in the District.....	85
13.10 Private Sector Organizations.....	87
SECTION E: POVERTY DATA	91
14 Data on Poverty	93
14.1 Predicted Poverty Rates for 2009, by commune	93
14.2 Poverty data from survey.....	93

List of Abbreviations

#	Number
AGR	Agriculture
BR	Birth Registration
C. Pilot	Piloted Commune
C/S	Commune / Sangkat
CBO	Community-Based Organization
CDB	Commune Database
CDPD	Commune Development and Planning Database
CIP	Commune Investment plan
CLTS	Community Led-Total Sanitation
Comm.	Commune
Com Cov	Commune Covered
CPA	Complementary Package of Activities
CPS	Community Preschool
CCWC	Commune Committees for Women and Children
DANIDA	Danish International Development Agency
DDLG	Democratic Development and Local Governance Project (EC-UNDP)
DFID	Department For International Development (UK)
DIP	District Initiative Project
DIS	District Information System
District PDRD	District Office of Rural Development
District WP	District Work Plan
DIW	District Integration Workshop
DoLA	Department of Local Administration
Dr	Doctor
DWRM	District Office of Water Resource and Meterology
ECD	Early Childhood education (part of PE)
EMIS	Education Management Information System
Event IC	Celebration of International Days
FDH	Former District Hospital
GTZ	German Society for Technical Cooperation (Gesellschaft für Technische Zusammenarbeit GmbH)
Ha	Hectare
HC	Health Center
HC (NB)	Health Center (no building)
HH	Headed Household
HSI	Intervention for Health
HP	Health Post
HW	Hand Washing
ICC	Inter Commune Council
IFAD	International Fund for Agricultural Development
IND	Industry
Inter-commune	Inter-Commune Project Management Committee or Inter-commune project
IO	International Organization
LASED	Land Allocation for Socio-Economic Development
LGCR	Local Governance for Children's Rights
M&E	Monitoring and Evaluation
MA	Medical Assistant
MoEYS	Ministry of Education, Youth and Sports
MoH	Ministry of Health

MoP	Ministry of Planning
MPA	Minimum Package of Activities
MW1	Primary Midwives
MW2	Secondary Midwives
n/a	Not available
NCD	National Contracts Database
NCDD	National Committee for Sub-National Democratic Development
NGO	Non-Governmental Organization
NRML	Natural Resources Management and Livelihood
NU1	Primary Nurse
NU2	Secondary Nurse
OD	Operational District
ODF	Open Defecation Free
Ope. Costs	Operational Costs
Others	Other Staff
PBW	Public Works
PDoEYS	Provincial Department of Education, Youth and Sport
PDRD	Provincial Department of Rural Development
PDWRM	Provincial Department of Water Resource and Meteorology
PE	Parenting Education
PHAST	Participatory Hygiene and Sanitation Transformation
PHD	Provincial Health Department
PID	Project Information Database
PMC	Project Management Committee
Pop 04-05	Population Covered 2004 or 2005
PSDD	Project to Support Democratic Development through Decentralization and Deconcentration
RRD	Rural Road Development
RH	Referral Hospital
RILGP	Rural Investment and Local Governance Project
RPRP	Rural Poverty Reduction Program
RuLIP	Rural Livelihoods Improvement Program
SIDA	Swedish International Development Cooperation Agency
SPPA	Senior Provincial Program Advisor
TBA	Traditional Birth Attendant
UNDP	United Nations Development Project
UNICEF	United Nations Children's Fund
Vil	Village
Vil Cov	Village Covered
VIL-HC	Distance from Village to Health Center
WASH	Water, Sanitation and Hygiene
WRM	Water Resource and Meteorology

Glossary

C/S Fund: The Commune/Sangkat Fund is established and managed by the Government of Cambodia to provide financial support for development projects and administrative costs of Commune/Sangkat Councils. The amount is determined as a percentage of the National Budget (for 2009: 2.8% over the 2008 budget) and is expected to increase gradually over the years. The total 2009 budget under this fund is \$ 27,643,902 (of which \$ 19,272,170 is for Development Projects and \$ 8,371,731 for Administration). Under the Rural Investment and Local Governance Project the World Bank currently reimburses the costs of development projects if these meet the Bank's criteria.

CDB: the Commune Data Base is a national database, compiled by the Ministry of Planning, on the basis of detailed questionnaires, completed at village and commune level, which are then sent to the Departments of Planning for data entry. The most recent round of data collection took place at the end of 2008 (and is reflected in the District Data Books). Commune, District and Provincial Profiles can be generated from this database and should be available from provincial Departments of Planning.

CDPD: the Commune Development and Planning Database is a database maintained by Departments of Planning and Ministry of Planning, recording proposed activities as determined and prioritized by Commune and Sangkat Councils; the Temporary Agreements between these councils and supporting agencies, as decided at District Integration Workshops and details on projects that actually take place at commune, district and provincial levels.

CIP: The Commune Investment Plan is a rolling three-year plan, developed and decided by the Commune or Sangkat Council. It sets priorities and identifies the projects proposed for the years to come.

Commune and Sangkat (C/S): the Communes (in rural areas) and Sangkats (in urban areas) are the lowest and smallest units of local government. Councils are elected directly, once in five years, for the 1417 Communes and 204 Sangkats. In the C/S there are 14,119 villages, which have Village Chiefs, but don't constitute a formal level of local government.

DIP: the District Initiative Project is jointly supported by the MDLF (Multi-Donor Livelihood Facility (supporting the NRM&L Program)) and PSDD. In 2009 it covers 106 districts, 60% of the total in the country, with a budget of \$ 3.2 million. It is focused on capacity development in planning, democratic development, public competitive procurement, financial management and service delivery.

DIS: The District Information System is a national database maintained by NCDD, recording resources, staff, revenue, infrastructure and equipment available in the 193 Districts and Khans throughout the country. The last update took place in July 2009.

District, Municipality and Khan constitutes the third level of Government in Cambodia. There are 159 rural Districts, 26 Municipalities and 8 Khans of Phnom Penh Capital. They all have Councils which were, for the first time, elected in May 2009, by the Commune/Sangkat Councilors. These councils have a mandate for 5 years.

DIW: District Integration Workshops are held between July and October, to bring Commune/Sangkat Councils, looking for support for their projects, together with the governmental and non-governmental agencies that may provide support.

ICC: Inter Communes Council projects are executed in 10 provinces under the Democratic and Decentralized Local Governance Project (DDLG). This five year project (2006-2010) is executed by Ministry of Interior and funded by the European Commission and UNDP. The project focuses on improving dialogue partnership and accountability; create a network of Commune Councils at the provincial and national level and support and contribute to local area development for poverty reduction. The work under the ICC component supports investments and services formulated through inter-commune dialogue and planning.

MEDiCAM: A non-profit and non-partisan membership organization for NGOs active in Cambodia's health sector. It is the primary networking agency for health-related NGOs.

NCDD: the National Committee for sub-National Democratic Development is the inter-ministerial body charged with the implementation of the Organic Law (a key legislative document, adopted in 2008, outlining the envisaged decentralization). NCDD also channels substantial financial assistance by a number of Development Partners, to projects and programs at various levels. This amounted to over \$ 91 million in 2008. More information at: www.ncdd.gov.kh. This website also provides access to reports, manuals, legal documents, details on projects and more.

OD: the Operational Districts are the districts as defined and used by the Ministry of Health. These do not coincide with the 193 (Administrative) Districts and Khans, as used by all other RGC agencies. The Operational Districts are usually larger, and so there are 77 Operational Districts against 193 administrative Districts and Khans. However they do fit within the boundaries of administrative provinces.

PID: The Project Information Database is the database maintained by NCDD at national and sub national level, to follow all aspects of projects by Commune and Sangkat Councils, including the C/S Fund projects

Provincial Investment Fund (PIF)

The Provincial Investment Fund is allocated to all Provinces and Municipalities according to a population based formula. Part of the fund is earmarked for support to planning activities of the Provincial / Municipal Department of Planning; and to gender mainstreaming activities of the Provincial Department of Women's Affairs. The remaining "un-earmarked PIF" is allocated by PRDC to sectoral technical departments against established criteria and in response to proposals with prioritisation taking into account: priorities formulated by the CS Councils and aggregated by District into District Priority Activities Matrices (DPAM); alignment with national planning and poverty alleviation criteria, complementarity with other planned activities; and performance of the Department concerned in implementation of activities in previous years. With this provisional allocation, the Department then programs activities through the District Integration Process. Finally, the agreed activities, plus support costs amounting to no more than 25% of the total, are included in a sub-contract signed between PRDC and the Department, pursuant to the overall PSDD contract signed between NCDD and PRDC. Total budget has been around \$ 2 million per year.

Province: the 23 Provinces and Phnom Penh Capital City represent the 2nd layer of government. They vary in size, from very small, like Kep (approx. 36,000 people) and Pailin (approx. 70,000 people), or large but with small populations, like Mondulkiri (over 60,000 people), and Ratanakiri (over 153,000) to densely populated and large, like Kampong Cham (over 1.7 million people) and Kandal (approx. 1.4 Million people).

PSDD: the Project to Support Democratic Development through Decentralization and Deconcentration is funded by DFID (UK), SIDA (Sweden) and UNDP and runs from 2006 till the end of 2010 (including a one year extension). Annual budgets range from \$ 11 million to over \$ 18 million. The project provides core technical support to NCDD and to the provinces, financial support to the C/S Fund, District Initiative, Provincial Investment Fund and capacity building support through training, studies and advisory services.

RILGP: The Rural Investment and Local Governance Project is a World Bank funded project that provides substantial support to C/S Fund projects and to developing the required infrastructure, policies, systems and skills. It started in 2003 with a Loan for \$ 22 million for 2003-2007 and was then extended with a Grant of \$ 36 million for the period of 2007-2010. Discussions about a possible RILGP 2 are taking place between RGC and the World Bank.

RPRP: the Rural Poverty Reduction Project is a seven year project from 2004 till 2010, funded by IFAD and UNDP and implemented through the Ministry of Agriculture, Forestry and Fishery, supported by the Ministry of Interior and facilitated by NCDD. The project is active in the provinces Prey Veng and Svay Rieng and focuses on 120,600 households below poverty line. The objective is poverty reduction with the active participation of the poor through improved livelihoods, Strengthened capacity, Sustainable farming systems and natural resource management, new and/or rehabilitated infrastructure development, increase accessibly to technology, services and markets for their economic and social development.

RULIP: the Rural Livelihoods Improvement Project is implemented by the Ministry of Agriculture Forestry and Fisheries (MAFF)' Project Support Unit- PSU, with the NCDD playing the role of cooperating agency. Funded by IFAD and UNDP, the project will run till 2014. The target group consists of poor households who have little or even no land, few livestock or other assets and often many dependents. The main goal of the project is to directly or indirectly improve the livelihood systems, food security and incomes of a total of 33,900 rural poor, ethnic minority and female headed households in targeted village of Kratie, Preah Vihear and Ratanakiri provinces in a sustainable manner.

Seth Koma: The UNICEF funded Seth Koma program focuses on measurable action for children and women. During 2006 -2010 it is implemented in six provinces. Government and UNICEF pursue a set of inter-related goals, addressing critical stages of the life cycle of the child: a) Mothers have safe pregnancies and deliveries and healthy newborns; b) best possible start in life of infant; c) Children enter schools at the right age of six years; d) Children are protected from exploitation, abuse, violence, discrimination and other risks; and e) Youth and adolescents acquire life skills, express their views, participate in the decisions.

Preface

The Government of Cambodia attaches great importance to optimal use of scarce resources and to participatory planning and management at all levels. The Organic Law which was adopted in 2008 provides the legal context for further steps towards improving and decentralizing planning, management and monitoring, and towards greater accountability and transparency of institutions at sub-national levels.

The Government has established elected Councils at the sub-national levels, and we will progressively give them the responsibilities, together with the human and financial resources, to deliver a wide range of public services. They will be more democratic, more efficient, more transparent and accountable, better at addressing gender and other inequalities, and at fighting corruption. We recognize that development does not come from government alone; it needs the involvement of citizens, civil society and the private sector, and the new system will facilitate this.

A central element in this process is the availability of information on any aspect of development to all concerned parties. The newly elected Councillors at District and Khan level, line departments operating at these levels, but also NGOs, Development Partners, Commune Councillors and citizens throughout Cambodia need information on problems and requirements, resources and opportunities, services and agencies, plans and projects. They will need such information to better understand the present situation, set targets for the future, monitor progress, know what others are doing and to apply resources wisely and this is the reason the District Data books will be so valuable.

The District Data Books are a major step towards full transparency and towards informed planning and decision-making. They provide all available data at District, Khan, Commune and Sangkat level in easily accessible formats, in Khmer and English, through over 16,000 printed copies, CD-ROMs and the NCDD website.

This is the first time in Cambodia (and possibly in South East Asia) that such detailed information is made so widely available and NCDD should be commended for the hard work that has gone into this. We also thank the Ministry of Planning, which provided the detailed data of the Commune Data Base, the sectoral ministries and provincial authorities who contributed data and the Development Partners who provided financial support.

It is our sincere hope that the publication of the District Data Books will strengthen capacities, especially at district levels, for evidence-based development planning. We also hope that this information will deepen the understanding among Ministries, Provincial Authorities, Development Partners, NGOs and research agencies of the realities at commune and district levels.

We call upon all to use and distribute this information, complement or correct where appropriate and to contribute new data in the years to come.

Sar KHENG

Deputy Prime Minister, Minister of Interior and Chairman of NCDD

Introduction

Purpose

The purpose of the District Data Books is to bring together information on any aspect of life and development of Districts, Khans, Communes and Sangkat, together and make this widely available. The primary targets are the newly elected District Councilors, district level line departments, provincial agencies, Development Partners and NGOs operating at this level. They need detailed knowledge on current living conditions, natural resources, infrastructure, agriculture and other economic activities, current service levels, past and planned projects and available resources.

While much information exists on many of the above aspects, it is often hard to access that information and much is lost to reports, databases and statistics that are not widely shared. Data are often only available in one language and often out-of-date, and many reports cover only one sector or region.

We found that these problems are especially acute at the district level. Now that Districts are becoming a much more significant level of local government and development planning, there is an urgent need for wide-ranging data to be used for setting base-lines, planning and prioritizing, monitoring and learning.

Approach

We have attempted to identify and compile all available statistics, reports, maps and other data at district and/or commune level. From this we have selected information that is available for all or most districts, reasonably reliable and up-to-date, sufficiently detailed and of possible interest to development planners, decision makers, agencies and citizens.

The major sources of the information in these District Data Books are:

- a) The Commune Data Base information over the years 2006 to 2009 (the most recent data were collected late last 2008), as compiled by the Ministry of Planning
- b) Detailed information directly collected from the Ministry of Health, the Ministry of Education, Youth and Sports and (for maps) the Ministry of Land Management, Urban Planning and Construction
- c) The Project Information Database (PID) at NCDD (up-to-date)
- d) The Commune Development and Planning Database (CDPD) (up to date)
- e) The District Information System (DIS) (updated per Mid 2009)
- f) Direct data collection at provincial and district level on private sector, irrigation, roads, and electricity, through provincial agencies
- g) Medical data collected from MEDiCAM
- h) The ID Poor Project – for poverty data on a number of provinces and districts
- i) NCDD's work on predictive poverty rates
- j) Specific projects for outputs, plans and budgets (Seth Koma, RILGP, RPRP and ICC)

Limitations of the data

We are fully aware that the data we collected are not always complete, consistent or correct. While we have rejected information that was wrong or very incomplete, we decided not to aim for statistical and scientific perfection, but to include information that is useful, relevant

and comprehensive. We also accepted different sources for the same data as this may encourage discussion on the quality of the respective data.

We strongly encourage anyone who notes errors or incompleteness in these data to contact us and to share their data. We hope that the next round of producing such District Data Books can draw on wider sources and more complete data.

We encourage the District Administrations, who receive these data also in digital format, not only to use these for their planning and monitoring, but also to start correcting and updating these data and to share new data with NCDD for future use.

Contents

The information in the following pages is organized in five sections:

- a) **Geographical data:** this section provides maps on infrastructure and administration and on land use and natural resources management. These maps are also provided in large format to all Districts and Khans.
- b) **District Profile:** this presents wide ranging data, covering 2006 – 2009, at district and commune level, extracted from the Commune Data Base, but edited for better understanding.
- c) **Plans and Projects:** this section presents development priorities determined by Commune and Sangkat Councils, Temporary Agreements, outputs and expenditure of major projects at Commune and District level over 2006 – 2008 and plans and budgets for 2009.
- d) **Services and Organizations:** this section provides details on key infrastructure (roads, electricity, irrigation systems) and services in health and education at district and commune level. It also provides an inventory of resources at the District Administration, NGOs operating in the district and private sector agencies active in the district.
- e) **Poverty Data:** this section provides predicted poverty rates for 2009 for all districts and communes and detailed poverty data compiled and processed by the ID Poor project for those that have been covered by this project.

The future

It is our hope that this is the start of a longer-term process. We hope that a next edition of these District Data Books will offer more comprehensive, correct and up-to-date information. We hope that the District Administrations will not only start using this information, but also improve and update it. For this they are all provided with the full data set in digital format.

We invite agencies, projects and experts to send reports, statistics and maps that could be used for a next version to us and we invite all users of the District Data Books to inform us about errors, updates and inconsistencies. Please contact us through info@ncdd.gov.kh

We now invite you to browse through this data book. You may open this randomly or use the table of contents and go to the aspects that have your special interest.

We hope that you will be informed, surprised and assisted. We hope, above all, that this information will lead to a deeper understanding of causes and effects of poverty, to purposeful decisions on how to tackle those causes and to greater transparency in using scarce resources for the benefit of all.

Martin de Graaf
Program Advisor, PSDD/NCD

SECTION A: GEOGRAPHY

1 Administration and Infrastructure

Please see separate folder containing A3 maps.

2 Land Use and Natural Resources

Please see separate folder containing A3 maps.

3 Geography

3.1 Land Area

Total Land Area (ha)	Forest Land Area (ha)		Cultivation Land Area (ha)	Construction Land Area (ha)	Other Land Area (ha)
	Total	Flooded Forest Area			
70400	8276	0	32397	2602	27125

3.2 Distances between Offices

Location	Distance (Km)
From District Office to C/S Office of Phnum Proek	12
From District Office to C/S Office of Pech Chenda	2
From District Office to C/S Office of Chak Krei	22
From District Office to C/S Office of Barang Thleak	17
From District Office to C/S Office of Ou Rumduol	6

SECTION B: DISTRICT PROFILE¹

¹ All data in this section come from the Commune Database (CDB) unless otherwise specified. These include primarily new CDB data, collected late 2008, and some data from earlier years. Please note that percentages are rounded to the nearest whole number.

1 General Information

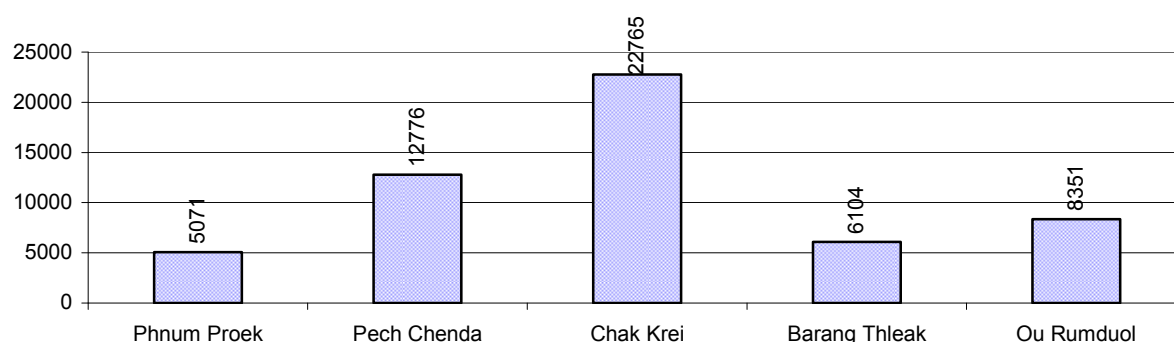
1.1 Population of the District

1.1.1 Total Population

Number of families	2005	2006	2007	2008
Total number of families	8,737 families	9,687 families	9,766 families	10,915 families
Increase (+)/Decrease (-) in nr of families		11%	1%	12%
Total population	42,831 pers	47,841 pers	51,450 pers	55,067 pers
Increase (+)/Decrease (-) in nr of people		12%	8%	7%
Number of female Headed Households (HH)	1,076 families	1,268 families	1,319 families	1,394 families

Note: Percentages of population and increase/decrease are calculated on basis of the previous year. A negative sign in front of the percentage indicates a decrease in population.

1.1.2 Population, by Commune, in 2008



1.1.3 Population, by Age Group, over 3 years

Population by age group	2006	2007	2008	
	%	%	%	Number
Age 0-5 years (as percentage of the population)	17%	16%	16%	8,738 persons
Male 0-5 yrs	49%	54%	53%	4,667 persons
Female 0-5 yrs	51%	46%	47%	4,071 persons
Age 6-17 (as percentage of the population)	34%	35%	33%	18,044 persons
Male 6-17 yrs	51%	52%	51%	9,133 persons
Female 6-17 yrs	49%	48%	49%	8,911 persons
Age 18-60 (as percentage of the population)	47%	47%	49%	26,794 persons
Male 18-60 yrs	51%	52%	51%	13,709 persons
Female 18-60 yrs	49%	48%	49%	13,085 persons
Age 61 above (as percentage of the population)	2%	3%	3%	1,491 persons
Male 61	53%	51%	57%	846 persons
Female 61	47%	49%	43%	645 persons

Note: The overall percentage for each age group is calculated on the basis of the total population. The gender distribution of each group is calculated on the basis of the population within that particular age group.

1.2 Occupations

1.2.1 Percentage of families with a particular Occupation over 3 years

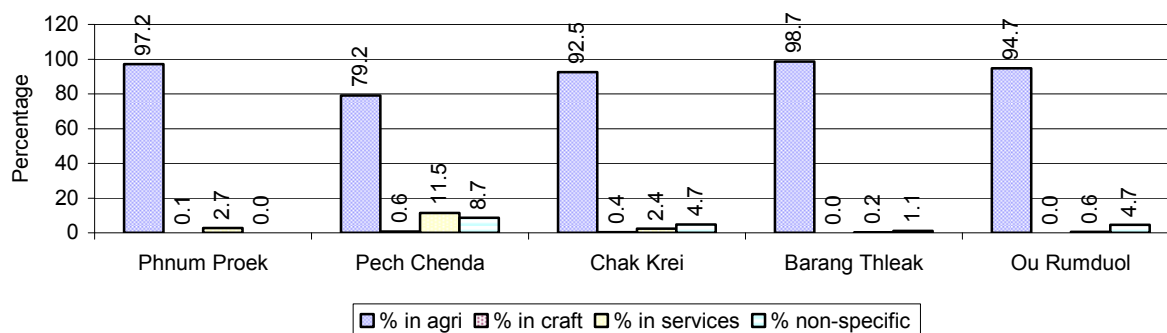
This table shows the percentage of the population who have a particular occupation (job), for example the percentage of the population in the district who are rice farmers, furniture crafter, trader, etc.

Description	2006	2007	2008	
	%	%	%	Number
Families whose main occupation is agriculture	92%	93%	91%	9,894 Families
Families whose primary occupation is rice farming	9%	8%	12%	1,300 Families
Families whose primary occupation is cultivating long-term crops	14%	4%	2%	259 Families
Families whose primary occupation is cultivating short-term crops	69%	82%	73%	7,927 Families
Families whose primary occupation is cultivating vegetable	1%	0%	4%	408 Families
Families whose primary occupation is fisherman	0%	0%	0%	0 Families
Families whose primary occupation is livestock farmer	0%	0%	0%	0 Families
Families whose primary occupation is NTFP collection	0%	0%	0%	0 Families
Families whose main occupation is craft work	0%	0%	0%	34 Families
Families, whose main occupation is in furniture craft, wooden, rattan, vine, bamboo	0%	0%	0%	20 Families
Families whose main occupation is in metal, aluminum, glass goods production	0%	0%	0%	0 Families
Families whose main occupation is food production	0%	0%	0%	0 Families
Families whose main occupation is tire, plastics and rubber goods production	0%	0%	0%	0 Families
Families whose main occupation is textile, clothing goods production	0%	0%	0%	0 Families
Families whose main occupation is in other production, not listed above	0%	0%	0%	14 Families
Families whose main occupation is services	2%	3%	4%	460 Families
Families whose main occupation is trade	1%	2%	3%	291 Families
Families whose main occupation is repair	1%	1%	1%	83 Families
Families whose main occupation is providing transport services	0%	0%	0%	27 Families
Families whose main occupation is providing other services	0%	1%	1%	59 Families
Families whose main occupation is not clear (or multi)	5%	3%	5%	527 Families

Note: The occupation percentages are calculated on the basis of the total number of families.

1.2.2 Percentage Families that work in one of four occupational sectors, by Commune in 2008

This table indicates the percentage of families involved in one of four occupation types: agriculture, craft, services or non-specific (other). Please note agriculture includes forestry activities such as cutting down trees and gathering gum from the trees.



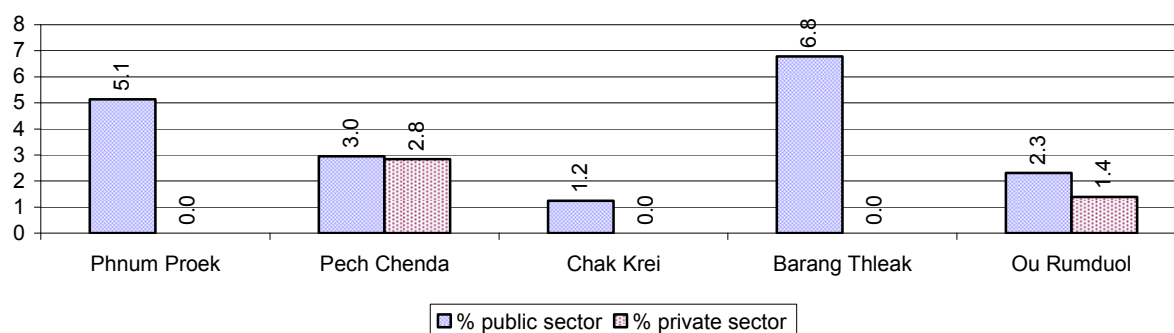
Note: Calculated on the basis of the total number of families within a commune.

1.2.3 Percentage of Families with public Sector, private Sector or uncertain Jobs, over 3 years

Description	2006	2007	2008	
	%	%	%	Number
Families that have a family member who is a government official, staff or worker	4%	3%	3%	314 families
Families that have a family member who is a private sector staff or worker	1%	0%	1%	103 families
Number of people aged 18-60 with uncertain/irregular jobs	4%	18%	18%	4,889 persons

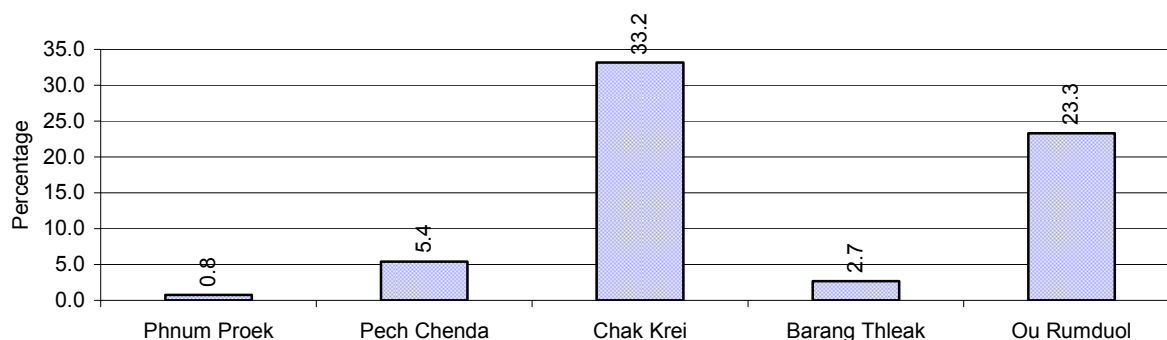
Note: In the first two rows percentages are calculated on the basis of the total number of families. In the third row the percentage is calculated on the basis of the total number of people aged 18-60 years.

1.2.4 Percentage of Families with public or private Sector Jobs, by Commune in 2008



Note: Calculated on the basis of the total number of families in the commune

1.2.5 Percentage of People aged 18-60 years with uncertain/irregular Jobs, by Commune, in 2008.



1.3 Property

1.3.1 Housing types and facilities over 3 years

This table shows the percentage of people living in a certain type of house. It also indicates how many houses have electricity or battery powered lights and how many have TV.

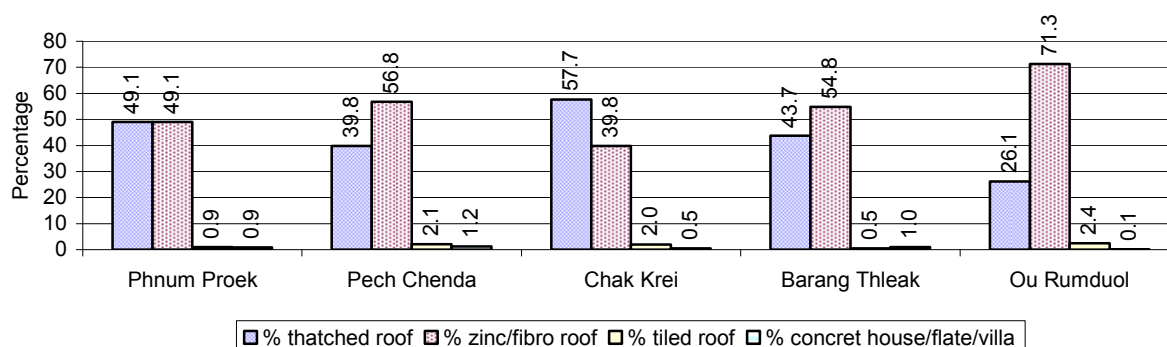
House Type	2006	2007	2008	
	%	%	%	Number
House with thatched roof	42 %	46 %	46 %	4,595 houses
House with zinc/fibro roof	56 %	53 %	52 %	5,218 houses
House with tiled roof	1 %	1 %	2 %	182 houses
Flats/apartments (with many families living)	0 %	0 %	0 %	25 houses
Concrete house or flat (with one family living)	0 %	0 %	0 %	48 houses
Villa house	0 %	0 %	0 %	7 houses
Houses with electricity	20 %	27 %	28 %	2,853 houses
Houses with battery light	49 %	51 %	48 %	4,865 houses
Houses with TV	36 %	46 %	52 %	5,243 houses

Note: Calculated against the total number of houses

1.3.2 Families living on public Land or without a permanent House

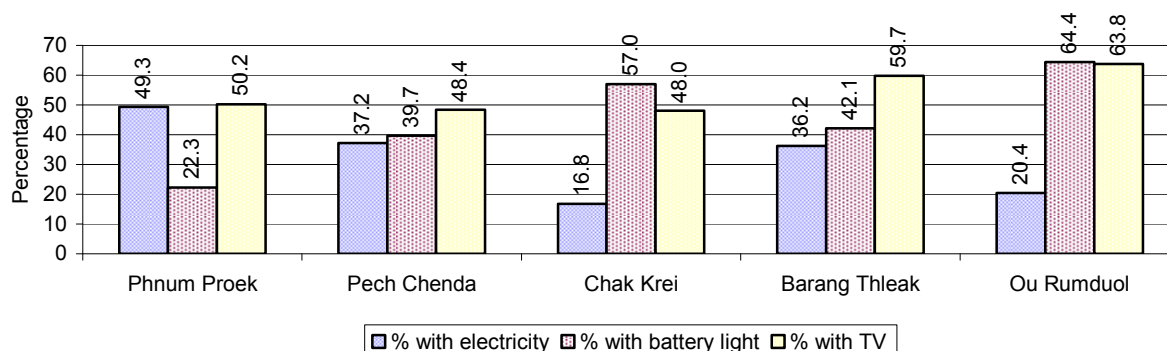
Living situation	2006	2007	2008
Families living in a house on public land	56 families	34 families	44 families
People, without permanent housing	67 person(s)	42 person(s)	25 person(s)

1.3.3 Percentage of Population living in a particular type of House, by Commune, in 2008



Note: Calculated against the total number of houses in each commune

1.3.4 Percentage of Houses with Electricity, Battery Lights and/or TVs, by Commune, in 2008



Note: Calculated against the total number of houses in each commune

1.3.5 Types of Vehicles and their ratio to Families across 3 years

This table shows the number of families per vehicle in the district. The last column shows the total number of each type of vehicle in the district for 2008.

Description	2006 ratio	2007 ratio	2008	
			Ratio	Number
Bicycle and bicycle with trailer	5	5	5	2,199
Ox-carts and horse-carts	68	73	56	196
Motorbike/with trailer	5	5	4	2,765
Motor tri-cycle	807	751	1,092	10
Large Transportation				
Total number of cars/trucks	24	24	24	458
Locally made vehicles	159	155	109	100
Trucks for goods transport	70	72	79	138
Buses/mini buses for passengers	4,844	3,255	1,213	9
Family cars	46	48	52	211
Agriculture machinery				
Tractors used for plowing	31	29	22	497
Power-tillage used for plowing	33	33	29	376
Other type of machinery				
Other type of machinery	285	514	331	33
Water transportation				
Row boats	N/A	N/A	N/A	0
Total number of motor boats	N/A	N/A	N/A	0
Motor boats used for fishing	N/A	N/A	N/A	0
Motor boats used for passengers	N/A	N/A	N/A	0
Motor boats used for goods transporting	N/A	N/A	N/A	0

Note: Ratio of families to a particular type of vehicle is the result of the total number of families divided by total number of that type of vehicle. Other types of vehicles, such as bulldozer, excavator, rollers etc. are not listed.

2 Infrastructure and Economy

2.1 Roads in meters over 3 years

Description	2006	2007	2008
Bituminous road	0 m	0 m	0 m
DBST, Macadam road	0 m	0 m	0 m
Concrete road	0 m	0 m	0 m
Laterite road	54,999 m	56,289 m	106,536 m
Constructed earth road	6,760 m	6,760 m	35,961 m
Un-constructed earth road	7,500 m	9,500 m	69,137 m

2.2 Sewerage Pipes in meters over 3 years

Description	Sewage pipe length		
	2006	2007	2008
Total length of sewage pipe, diameter 30-50 cm	0 m	0 m	22 m
Length of newly constructed sewage pipe, diameter 30-50 cm	0 m	0 m	0 m
Length of sewage pipe, diameter 30-50 cm needs repair/rehabilitation	0 m	0 m	0 m
Total length of sewage pipe, diameter of pipe 60-100 cm	5 m	0 m	184 m
Length of newly constructed sewage pipe, diameter 60-100 cm	5 m	5 m	0 m
Length of sewage pipe, diameter 60-100 cm needs repair/rehabilitation	0 m	0 m	0 m
Sewage pipe, diameter of pipe over 100 cm	5 m	0 m	39 m
Length of newly constructed sewage pipe, diameter over 100 cm	0 m	0 m	0 m
Length of sewage pipe, diameter over 100 cm needs repair/rehabilitation	0 m	0 m	0 m

2.3 Drainage and Bridges

Construction Type	2006		2007		2008	
	place(s)	Length	place(s)	Length	place(s)	Length
Single pipe culvert	57	65m	66	65 m	74	116 m
Double-pipe culvert	8	53m	12	53 m	15	40 m
Box pipe culvert	1	20m	1	20m	1	7 m
Wooden bridge	10	180m	10	180m	28	486 m
Concrete bridge	1	6m	1	6m	3	24 m
Bale bridge	0	0m	0	0m	0	0 m
Spillway construction	1	10m	1	10m	1	5 m

2.4 Services in the District

Descriptions	Number of places by year		
	2006	2007	2008
Public			
Electricity generating stations	9	2	6
Health clinics	0	0	0
Private			
Bicycle and motorcycle repair places	67	72	52
Agricultural machinery, tools and equipment repair places	5	11	22
Electronic tool repair places	5	7	22
Battery-charging services	35	32	27
Handicraft places, wooden furniture and forest by-products	7	8	17
Other handicraft places (excluding furniture)	6	4	4
Small-scale services (hairstylist, phone service, massage,	20	17	73

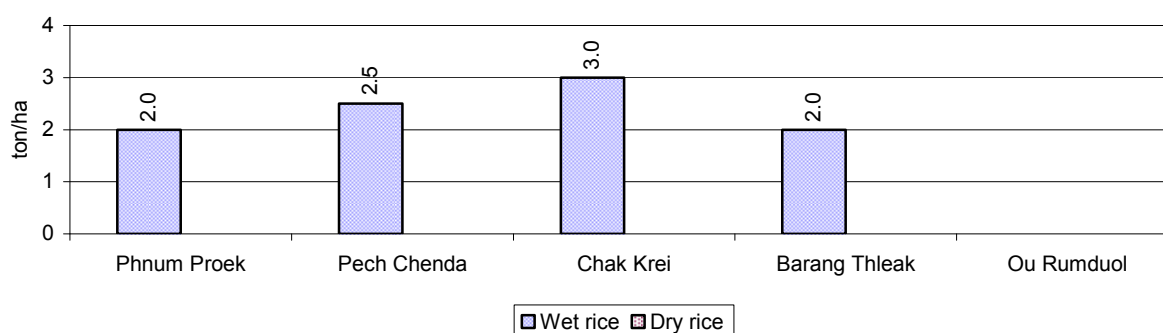
Descriptions	Number of places by year		
	2006	2007	2008
Karaoke, etc)			
Small-scale food shop businesses (Food, groceries, drink shop, etc)	25	12	82
Small-scale rice mills	12	20	69
Medium or large-scale rice mills	0	0	3
Small-scale markets	1	0	2
Large-scale market	1	1	1
Alcohol refinery places	3	5	21
Pharmacies and small drug stores	0	0	13
Hotels	1	1	1
Guest houses	3	4	4
Restaurants	0	0	0
Gasoline stations	2	2	3

2.5 Agriculture

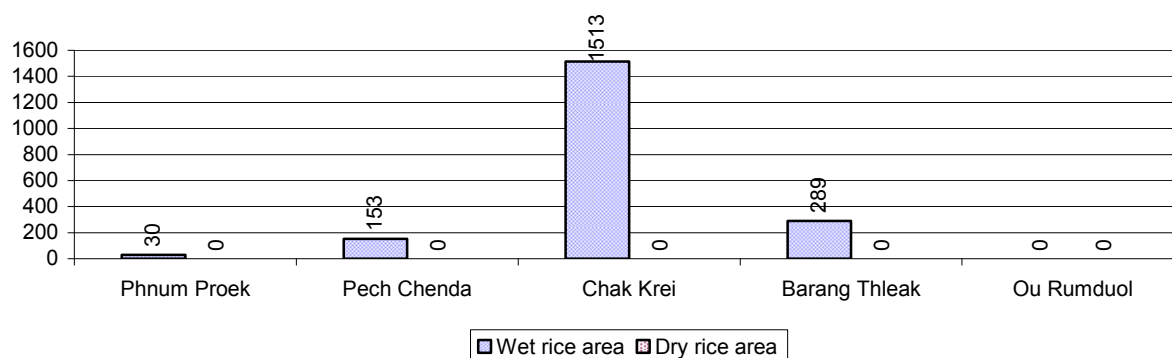
2.5.1 Rice cultivation in the District over 3 years

Description	2006	2007	2008
Total dry rice land area	0 ha	0 ha	0 ha
Actual dry rice cultivation area	0 ha	0 ha	0 ha
% actual cultivation to total land	-%	-%	-%
Total dry rice production	- tonne(s)	- tonne(s)	- tonne(s)
Average dry rice yield	- tonne(s)/ha	- tonne(s)/ha	- tonne(s)/ha
Total wet rice land area	2,089 ha	2,089 ha	4,380 ha
Actual wet rice cultivation area	961 ha	909 ha	1,985 ha
% actual cultivation to total land	46 %	44%	45%
Total wet rice production	1,922.00 tonne(s)	1,818.00 tonne(s)	4,714.38 tonne(s)
Average wet rice yield	2.0 tonne(s)/ha	2.0 tonne(s)/ha	2.4 tonne(s)/ha
Total intensive rice land area	0 ha	150 ha	0 ha
Actual intensive rice cultivation area	- ha	- ha	- ha
Average intensive rice yield	- tonne(s)/ha	- tonne(s)/ha	- tonne(s)/ha
Actual upland rice cultivation area	275 ha	310 ha	747 ha
Total upland rice production	440 tonne(s)	620 tonne(s)	1,643 tonne(s)
Average upland rice yield	1.6 tonne(s)/ha	2.0 tonne(s)/ha	2.2 tonne(s)/ha

2.5.2 Estimated wet and dry Season Rice Yield in tonne(s)/Ha, by Commune, in 2008



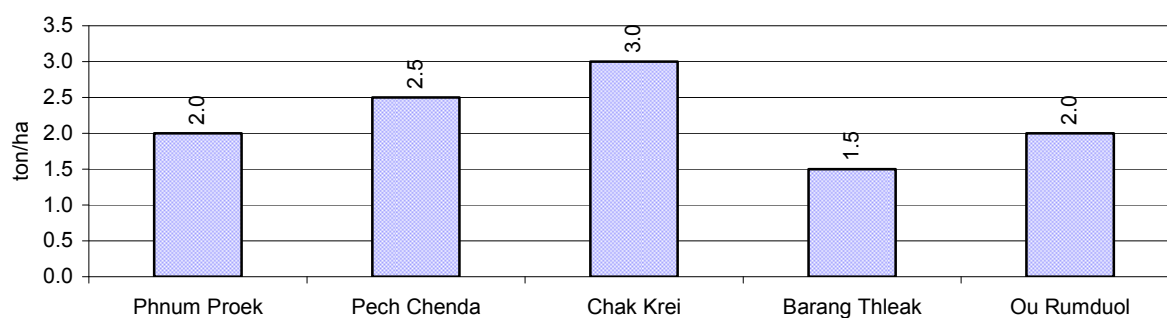
2.5.3 Cultivated wet and dry Season Rice areas in Ha, by Commune, in 2008



2.5.4 Estimated intensive Rice Yields in tonnes/Ha, by Commune, for 2008

There were no estimated intensive rice yields in this District in 2008

2.5.5 Estimated upland Rice Yield in tonnes/Ha, by Commune, for 2008

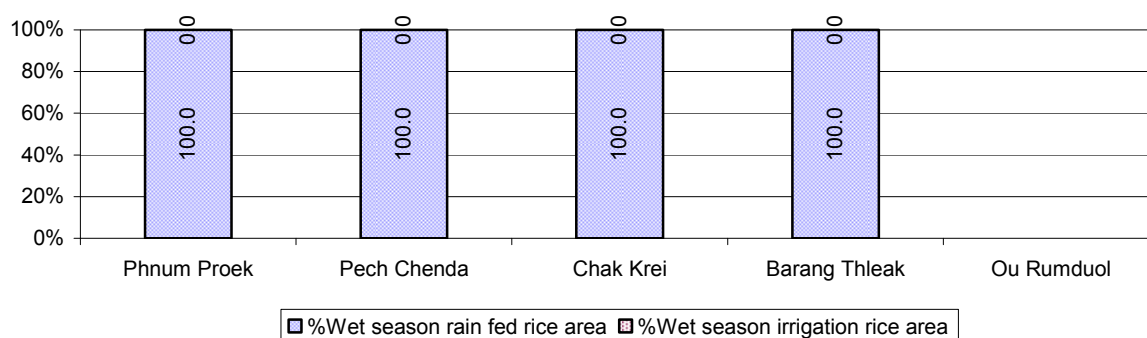


2.5.6 Wet season Rice irrigation across 3 years

Description		2006	2007	2008	
		%	%	%	Number
Total area of wet season rain fed rice land		100%	100%	100 %	1,985 ha
Percentage of wet season rice land that is irrigated; and for 2008 area in Ha		0 %	0 %	0 %	0 ha
Where	Area irrigated from canal/dam	- %	- %	- %	0 ha
	Area irrigated from river, stream, lake, natural pond	- %	- %	- %	0 ha
	Area irrigated from drilled well	- %	- %	- %	0 ha
	Area irrigated from dug pond	- %	- %	- %	0 ha

2.5.7 Water sources for wet Season Rice Cultivation, by Commune, in 2008

This chart shows the percentage of wet season rice cultivation receiving water from rain (natural) and from irrigation.



2.5.8 Access to Irrigation

Description	2006 %	2007 %	2008	
			%	Number
Families who have access to irrigation water	0%	0%	0%	0 families
Families who have irrigation wells	1%	1%	1%	10 families

Note: Calculated against the total number of families are rice farmers

2.5.9 Number of Irrigation Wells over 3 years

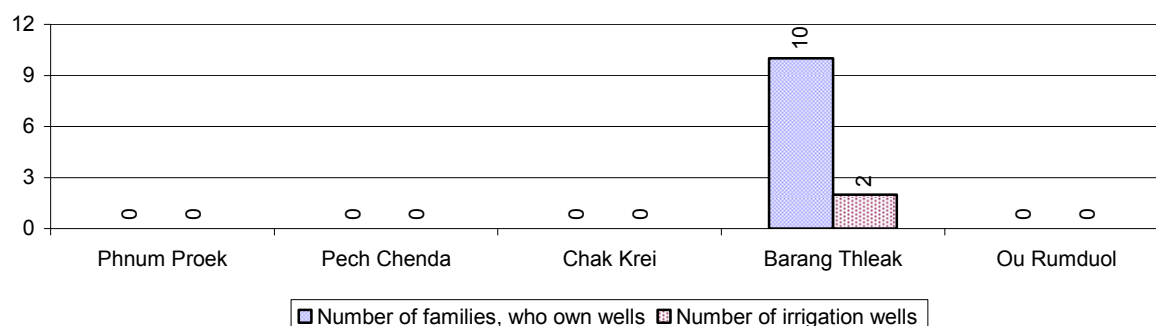
Description	2006	2007	2008
Number of irrigation wells	1 wells	2 wells	2 wells

2.5.10 Percentage of Families with access to (supplemental) Irrigation for wet Season Rice cultivation, by Commune, in 2008

There are no families with access to supplemental irrigation for wet season rice irrigation in this District in 2008

Note: % of families, with access to irrigation is calculated against the total number of families, whose main occupation is rice farming. Irrigated wet rice land area is calculated against the total actual wet rice land cultivated areas

2.5.11 Irrigation Wells, by Commune, in 2008

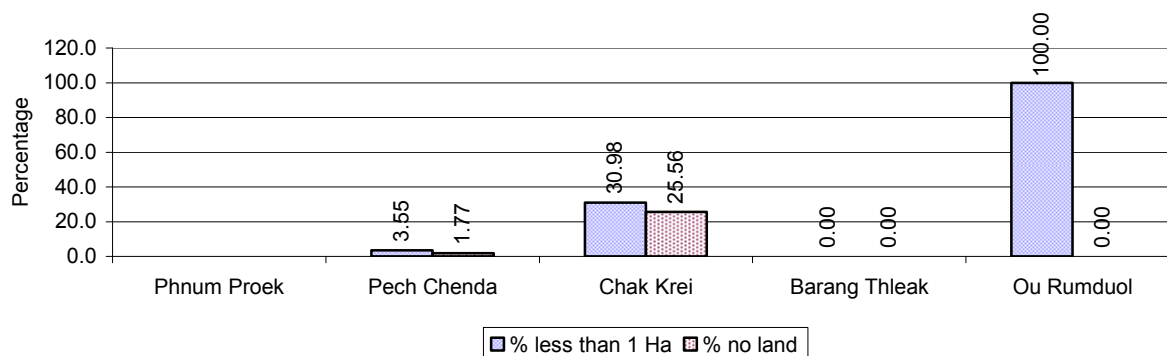


2.5.12 Farmers owning less than one hectare of Rice Land

Description	2006 %	2007 %	2008	
			%	Number
Families who have less than one hectare of rice land	32%	15%	25%	328 families
Families who do not own any rice land	11%	11%	20%	255 families

Note: Calculated on basis of total number of families who are rice farming

2.5.13 Percentage of Farmers with less than one Hectare or no Rice Land, by Commune, in 2008

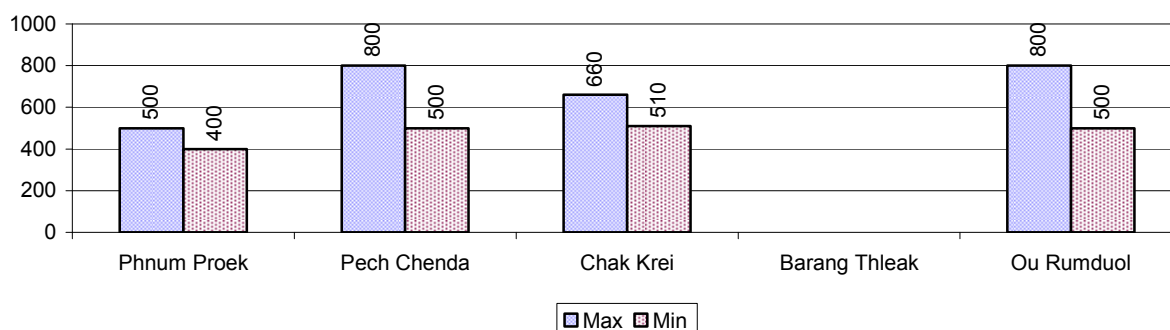


Note: Calculated on basis of total number of families who are rice farming

2.5.14 Average farm-gate Prices of Rice, over 3 years

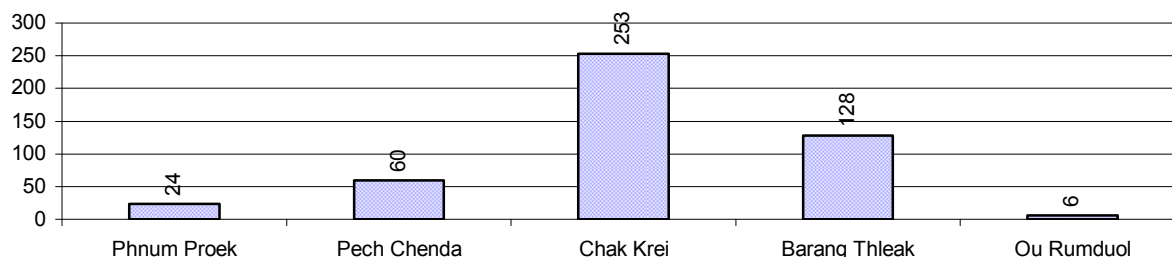
Description	2006	2007	2008
Maximum average farm gate price	514 Riels/Kg	678 Riels/Kg	690 Riels/Kg
Minimum average farm gate price	377 Riels/Kg	542 Riels/Kg	478 Riels/Kg
Average farm gate price	445 Riels/Kg	610 Riels/Kg	584 Riels/Kg
Average rice production per person	49 Kg/person	55 Kg/person	115 Kg/person

2.5.15 Minimum and maximum farm-gate Prices of Rice in Riel/kg, by Commune, in 2008



2.5.16 Production of Paddy in Kgs/Person, by Commune, in 2008

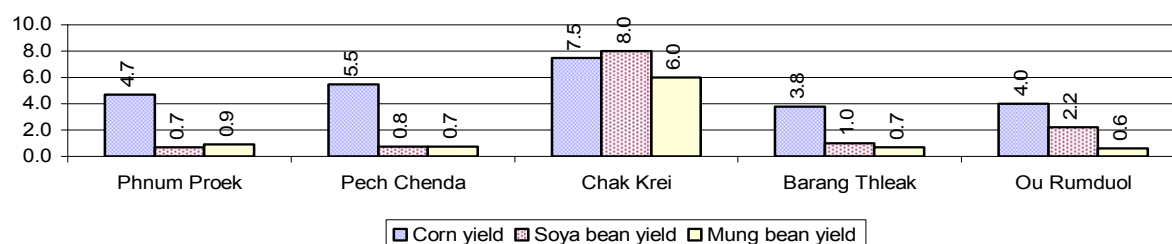
This table shows how much paddy (harvested rice) is produced in a year in a commune, in kgs per person.



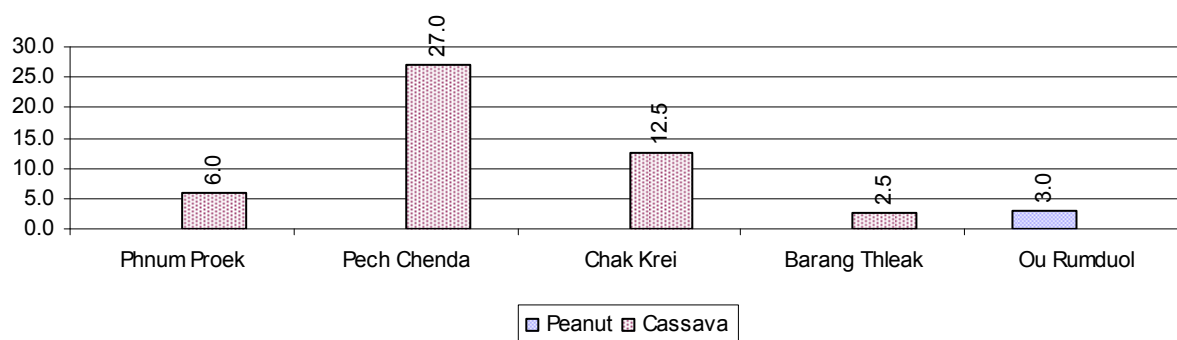
2.5.17 Production of other Crops, over 3 years

Crops	2006	2007	2008
Corn cultivation area	17,556 ha	21,302 ha	16,582 ha
Estimated corn yield	4.6 tonne(s)/ha	4.3 tonne(s)/ha	5.1 tonne(s)/ha
Estimated corn production	79,880 tonne(s)	91,684 tonne(s)	84,568 tonne(s)
Soya bean cultivation area	15,570 ha	16,070 ha	11,880 ha
Estimated Soya bean yield	1.3 tonne(s)/ha	1.5 tonne(s)/ha	2.5 tonne(s)/ha
Estimated Soya bean production	20,054 tonne(s)	24,491 tonne(s)	30,056 tonne(s)
Mungbean cultivation area	9,404 ha	11,982 ha	5,695 ha
Estimated Mungbean yield	1.1 tonne(s)/ha	1.0 tonne(s)/ha	1.8 tonne(s)/ha
Estimated Mungbean production	10,006 tonne(s)	11,790 tonne(s)	10,160 tonne(s)
Peanut cultivation area	20 ha	0 ha	60 ha
Estimated Peanut yield	0.6 tonne(s)/ha	- tonne(s)/ha	3.0 tonne(s)/ha
Estimated Peanut production	12 tonne(s)	- tonne(s)	180 tonne(s)
Cassava cultivation area	2,517 ha	3,079 ha	4,773 ha
Estimated Cassava yield	14.4 tonne(s)/ha	3.6 tonne(s)/ha	12.0 tonne(s)/ha
Estimated Cassava production	36,245 tonne(s)	11,084 tonne(s)	57,276 tonne(s)
Sweet potatoes cultivation area	0 ha	0 ha	0 ha
Estimated Sweet potatoes yield	- tonne(s)/ha	- tonne(s)/ha	- tonne(s)/ha
Estimated Sweet potatoes production	- tonne(s)	- tonne(s)	- tonne(s)
Sesame cultivation area	225 ha	16 ha	15 ha
Estimated Sesame yield	0.5 tonne(s)/ha	0.8 tonne(s)/ha	0.6 tonne(s)/ha
Estimated Sesame production	105 tonne(s)	13 tonne(s)	8 tonne(s)

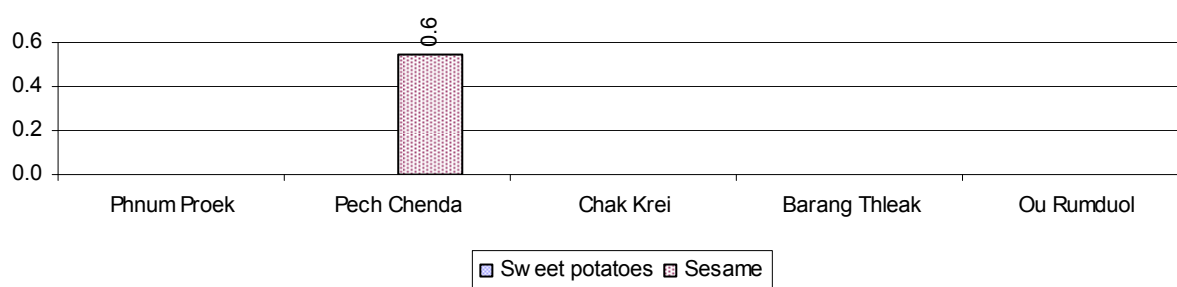
2.5.18 Yields of Corn, Soya beans and Mungbeans in tonne(s)/ha, by Commune, in 2008



2.5.19 Yields of Peanuts and Cassava in tonne(s)/ha by Commune, in 2008



2.5.20 Yields of Sweet Potatoes and Sesame in tonne(s)/ha, by Commune, in 2008



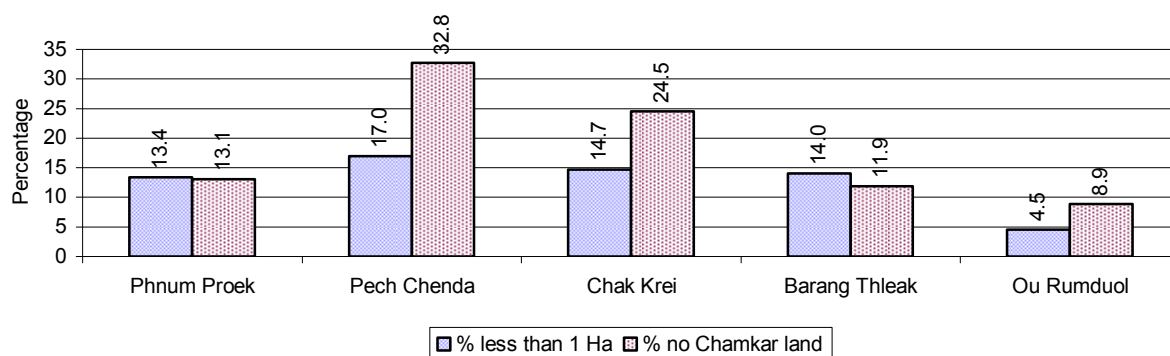
2.5.21 Percentage Farmers who own less than 1 Ha or no Chamkar land

Description	2006 %	2007 %	2008	
			%	Number
Families, who own less than 1ha of Chamkar land	9%	11%	13%	1,119 families
Families, with no Chamkar land	15%	13%	20%	1,735 families

Note 1: Calculated as a percentage of the total number of families whose main occupation is Chamkar (not rice) farming

Note 2: Chamkar land is no-rice land, i.e. other crops

2.5.22 Percentage Farmers owning less than 1 ha or no Chamkar land, by Commune, in 2008



Note: Percentage is calculated among families, who Chamkar farm as a main occupation, not the total population of the commune.

2.5.23 Percentage of Families raising Cattle/Buffalo, over 3 years

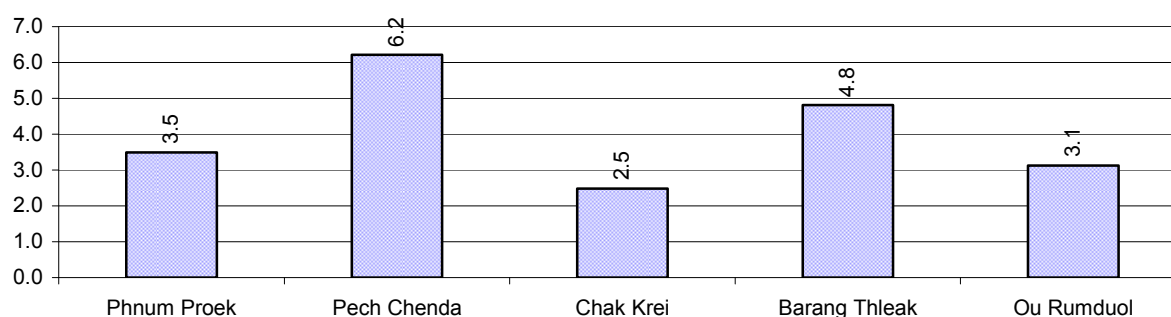
Description	2006 %	2007 %	2008	
			%	Number
Families raising cattle/buffalo	5%	8%	10%	1,109 families
Families raising cattle/buffalo as labor forces	2%	2%	2%	214 families

Note: Calculated against the total number of families.

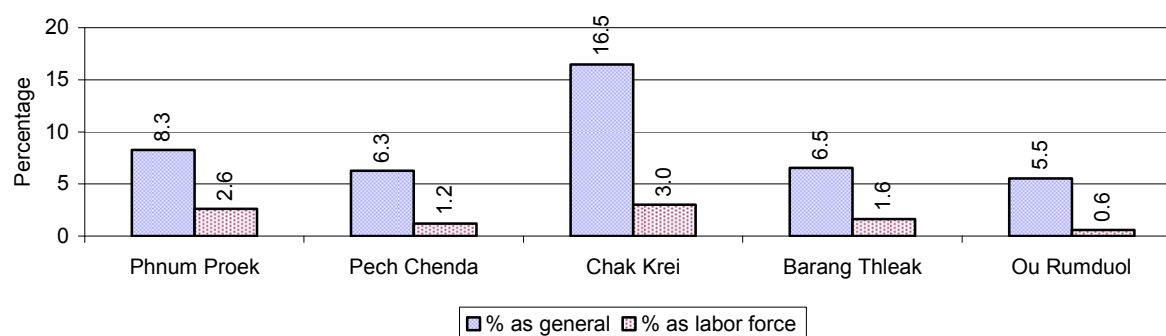
2.5.24 Number of Cattle/buffalo being raised, over 3 years

Description	2006	2007	2008
Total number of cattle/buffalo	2,582 head(s)	3,363 head(s)	3,749 head(s)
Average cattle/buffalo per families	5.4 head(s)/families	4.2 head(s)/families	3 head(s)/families

Note: Calculated by dividing total number of cattle/buffalo by total number of cattle/buffalo raising families

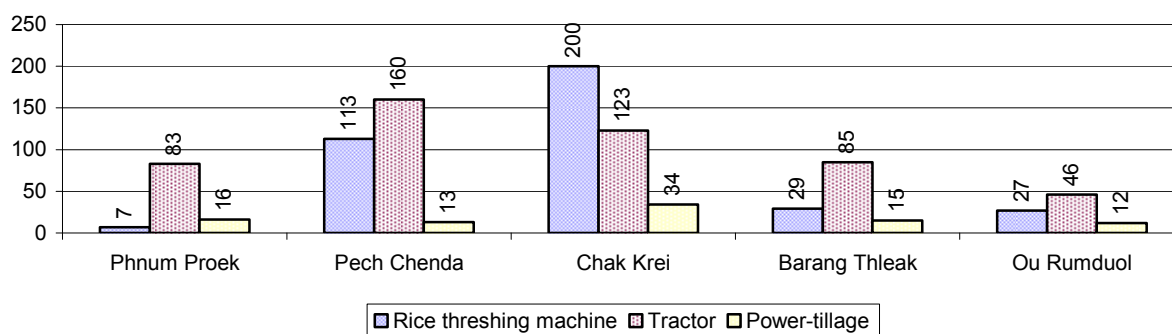
2.5.25 Average number of Cattle/Buffalo per Family, by Commune, in 2008

Note: Calculated by dividing total number of cattle/buffalo by total number of cattle/buffalo raising families

2.5.26 Percentage Families raising Cattle/Buffalo, for general and labor purposes in 2008, by Commune

Note: Calculated using the total number of families raising cattle/buffalo against the total number of families.

2.5.27 Type and number of agricultural Machines, by Commune, in 2008

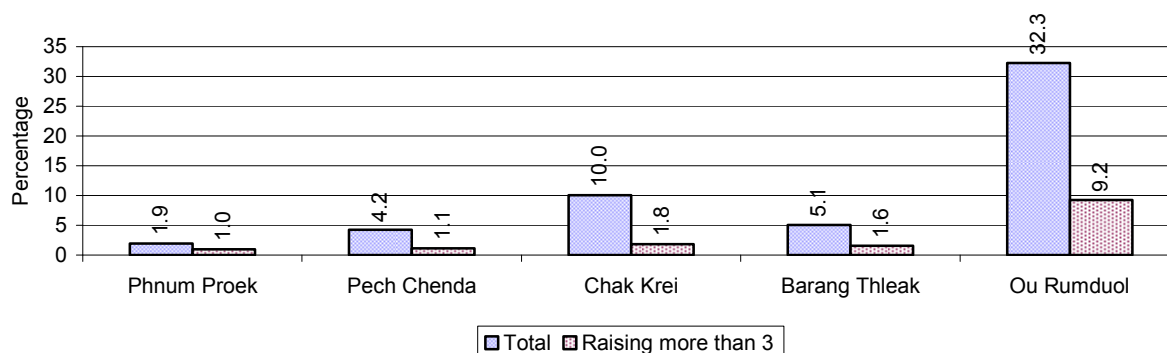


2.5.28 Livestock-producing Households over 3 years

Description	2006	2007	2008	
	%	%	%	Number
Total number of families raising pigs	15%	9%	11%	1,167 families
number of families raising more than 3 pigs	5%	1%	3%	294 families
Total number of families raising chickens	70%	69%	70%	7,676 families
number of families raising more than 3 chickens	48%	56%	54%	5,927 families
Total number of families raising ducks	7%	6%	12%	1,340 families
number of families raising more than 5 ducks	3%	3%	3%	359 families
Total number of families raising goats or sheep	0%	0%	0%	5 families
Total number of families raising horses	0%	0%	0%	2 families

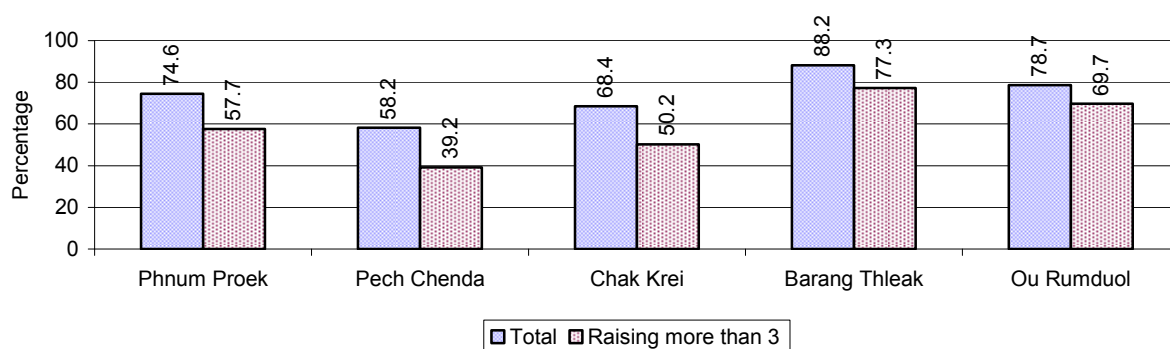
Note: Calculated against the total number of families

2.5.29 Percentage Families raising Pigs, by Commune, in 2008



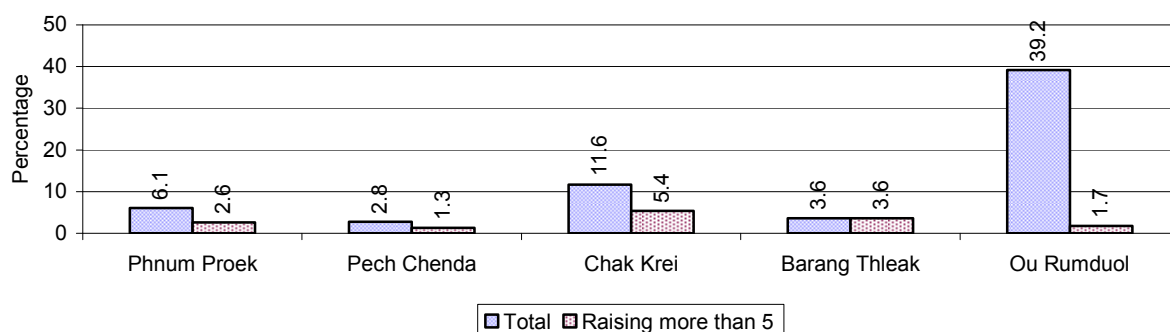
Note: Calculated against the total number of families in the commune

2.5.30 Percentage Families raising Chickens, by Commune, in 2008



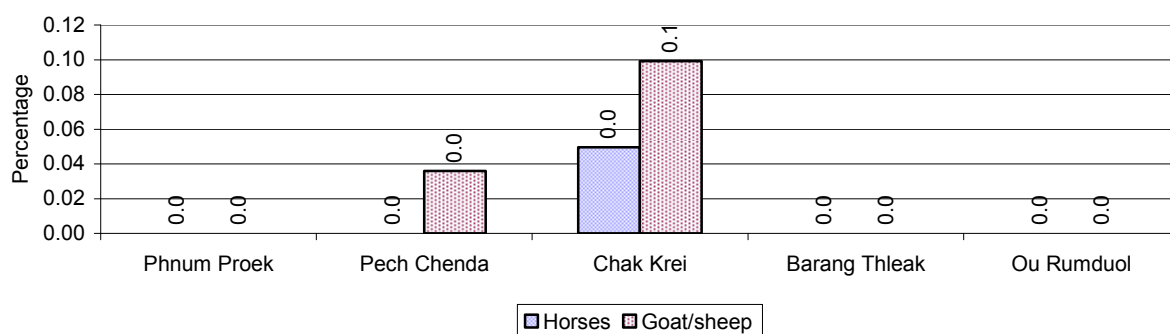
Note: Calculated against the total number of families in the commune

2.5.31 Percentage Families raising Ducks, by Commune, in 2008



Note: Calculated against the total number of families in the commune

2.5.32 Percentage Families raising Horses, Goats or Sheep, by Commune, in 2008



Note: Calculated against the total number of families in the commune

2.5.33 Livestock Farms over 3 years

Description	2006	2007	2008
Number of cattle/buffalo farms	0 farm(s)	0 farm(s)	0 farm(s)
Number of pig farms	0 farm(s)	0 farm(s)	0 farm(s)
Number of goat/sheep farms	0 farm(s)	0 farm(s)	0 farm(s)
Number of chicken farms	0 farm(s)	0 farm(s)	0 farm(s)
Number of duck farms	0 farm(s)	0 farm(s)	0 farm(s)

2.5.34 Number Livestock Farms, by Commune in 2008

There were no farms of this type in this District in 2008

Note: Number of farms are recorded by the village chief, not by counting number of livestock in each farm

2.5.35 Number Chicken and Duck Farms, by Commune, for 2008

There were no farms of this type in this District in 2008

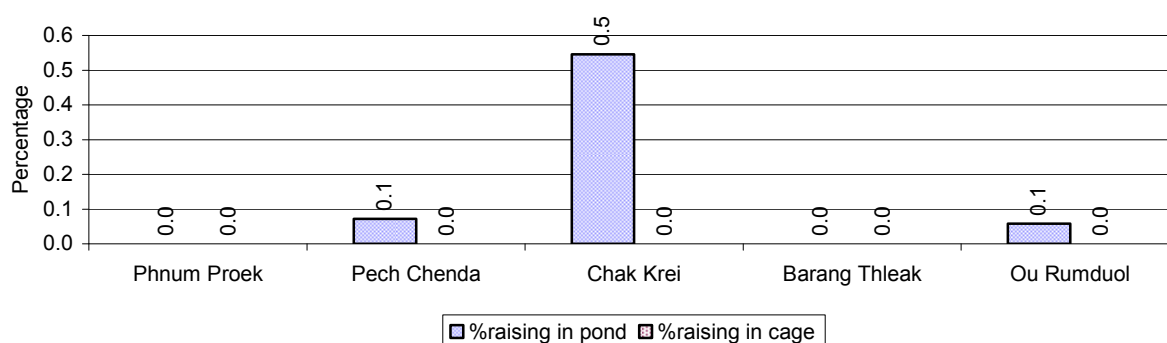
Note: Number of farm places recorded by village chief, not by counting number of livestock in each farm

2.5.36 Families raising Fish over 3 years

Description	2006	2007	2008
Total number of families raising fish	26 families	10 families	25 families
% families raising fish	0%	0%	0%
Number families raising fish in pond	26 families	10 families	25 families
% families raising fish in pond	0%	0 %	0%
Number fish pond	28 pond(s)	10 pond(s)	25 pond(s)
No. of ponds per family	1.1 pond/families	1.0 pond/families	1.0 pond/families
Number of families raising fish in cage	0 families	0 families	0 families
%families raising fish in cage	0 %	0 %	0%
Number of fish cage	0 cage(s)	0 cage(s)	0 cage(s)
No. of fish cage per family	- cage /families	- cage /families	- cage /families

Note: % of families raising fish or fish in ponds or cages is calculated a percentage of the total number of families.

2.5.37 Percentage of Families raising Fish, by Commune, in 2008



Note: Calculated as a percentage of the total number of families in the commune.

2.5.38 Shrimp and Prawn Farming over 3 years

Description	2006	2007	2008
Number of families raising shrimps	0 families	0 families	0 families
% Families raising shrimps	0%	0%	0%
Number of shrimp ponds	0 pond	0 pond	0 pond
Total area raising shrimps	0 ha	0 ha	0 ha
Area per family	-ha/families	-ha/families	-ha/families
Number of families raising prawns	0 families	0 families	0 families
% families raising prawns	0%	0%	0%
Number prawn ponds	0 pond	0 pond	0 pond
Ponds per families	- pond/families	-pond/families	-pond/families
Number of prawn cages	0 cage	0 cage	0 cage
Cages per families	0 cage /families	0 cage /families	0 cage /families

Note: Percentage of families raising either prawns or shrimp is calculated against the number of families, who do aquaculture farming, NOT the total population.

2.5.39 Numbers of Families raising Shrimps and number of Shrimp Ponds, by Commune, in 2008

There were none of these in this District in 2008

2.5.40 Number of Families raising Prawn and Number of Prawn Ponds/Cages, by Commune, in 2008

There were none of these in this District in 2008

3 Social Aspects**3.1 Education****3.1.1 Kindergarten in the District over 3 years**

Description	2006	2007	2008
Number of community kindergarten schools	0 school(s)	0 school(s)	0 school(s)
Number of community kindergarten class rooms	0 room(s)	0 room(s)	0 room(s)
Number of community kindergarten classes	0 class(es)	0 class(es)	0 class(es)
Number of community kindergarten teachers	0 person(s)	0 person(s)	0 person(s)
Number of women community kindergarten teachers	0 women	0 women	0 women
Number of state and private kindergarten schools	0 school(s)	0 school(s)	0 school(s)
Number of state and private kindergarten class rooms	0 room(s)	0 room(s)	0 room(s)
Number of state and private kindergarten classes	0 class(es)	0 class(es)	0 class(es)
Number of state and private kindergarten teachers	0 person(s)	0 person(s)	0 person(s)
Number of women state and private kindergarten teachers	0 women	0 women	0 women

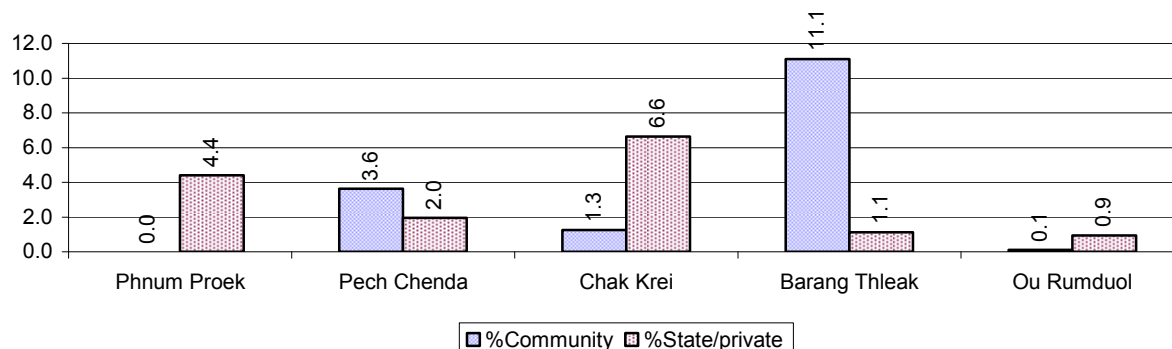
3.1.2 Percentage enrolment at Kindergarten level over 3 years

This table shows the percentage of the total 3-5 year old population attending kindergarten.

Description	2006 %	2007 %	2008	
			%	Number
Total percentage of children, 3-5 yrs, go to kindergarten	7%	4%	6%	323 person(s)
Percentage of children, 3-5 yrs, go community kindergarten	5%	1%	2%	126 person(s)
Percentage children, 3-5 yrs, go state/private kindergarten	2%	3%	3%	197 person(s)

Note: Calculated against the total for that age group

3.1.3 Percentage of Children 3-5 yrs attending Kindergarten, by Commune, in 2008



3.1.4 Basic Education over 3 years

Primary School

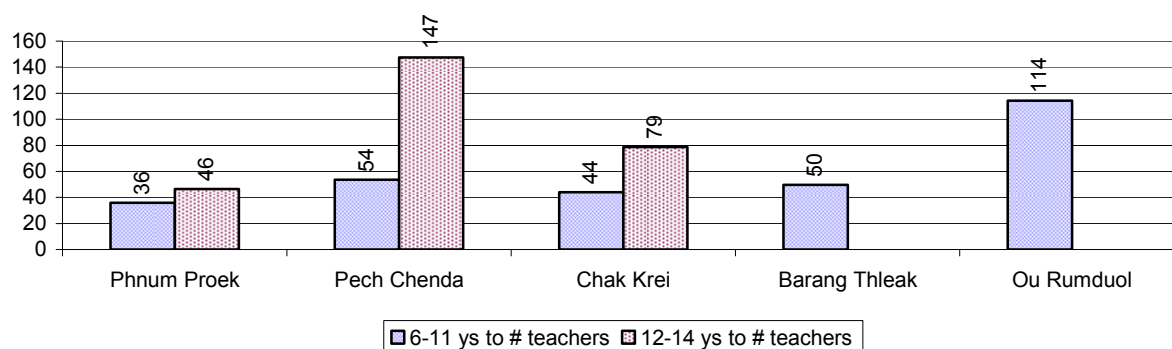
Description	2006	2007	2008
Number of primary schools	22 school(s)	24 school(s)	24 school(s)
Number of primary school rooms	99 room(s)	101 room(s)	105 room(s)
Number of primary classes	210 class(es)	222 class(es)	233 class(es)
Number of primary teachers	142 person(s)	135 person(s)	166 person(s)
Ratio of children 6-11 yrs to school	350	351	352
Ratio of children 6-11 yrs to school room	78	83	80
Ratio of children 6-11 yrs to class	37	38	36
Ratio of children 6-11 yrs to teacher	54	62	51

Note: According to education norm, children 6-11 yrs should attend primary school, while 12-14 yrs should be in lower secondary school, but in reality this varies.

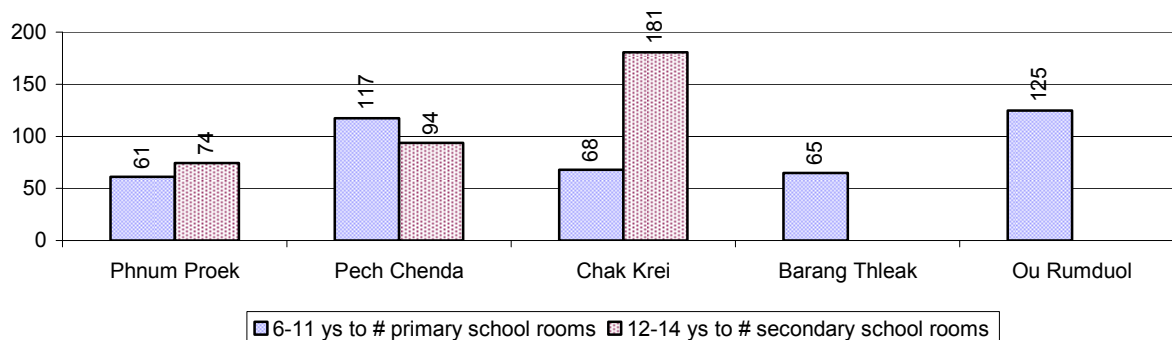
Lower Secondary School

Description	2006	2007	2008
Number of lower secondary schools	5 school(s)	5 school(s)	5 school(s)
Number of lower secondary school rooms	25 room(s)	25 room(s)	26 room(s)
Number of lower secondary classes	24 class(es)	24 class(es)	27 class(es)
Number of lower secondary teachers	33 person(s)	38 person(s)	38 person(s)
Ratio children 12-14 yrs to school	887	922	918
Ratio of children 12-14 yrs to school room	177	184	177
Ratio of children 12-14 yrs to class	185	192	170
Ratio of children 12-14 yrs to teacher	134	121	121

3.1.5 Ratio of 6-11 year old and 12-14 year old Children to number of Teachers, by Commune, in 2008



3.1.6 Ratio of 6-11 year old and 12-14 year old Children to number of School Rooms, by Commune, in 2008



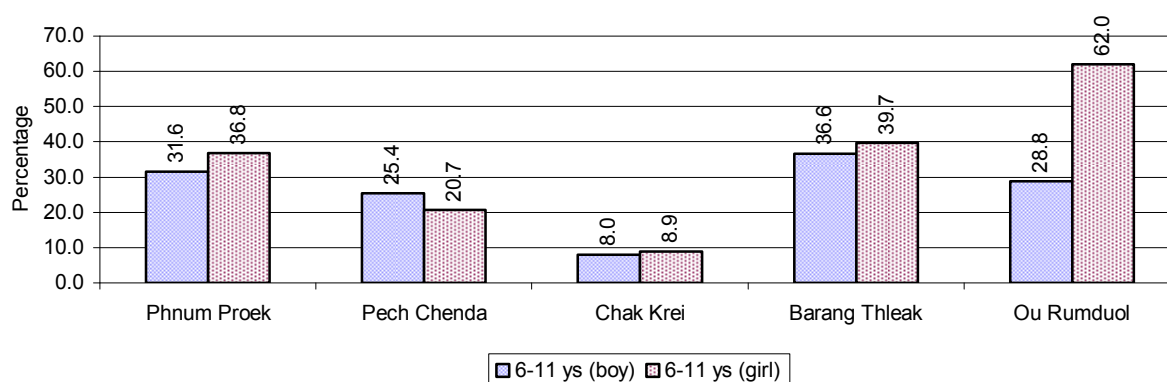
3.1.7 Enrolment status at Primary Level over 3 years

Description	2006	2007	2008	
	%	%	%	Number
Total children aged 6-11 years old	16%	16%	15%	8,440 person(s)
Total children aged 6-11 who are in school	68%	73%	77%	6,514 person(s)
Total children aged 6-11 who are not in school	32%	27%	23%	1,926 person(s)
Total girls aged 6-11 years old	16%	17%	16%	4,291 person(s)
Total girls aged 6-11 who are in school	67%	73%	75%	3,206 person(s)
Total girls aged 6-11 who are not in school	33%	27%	25%	1,085 person(s)
Total boys aged 6-11 years old	16%	16%	15%	4,149 person(s)
Total boys aged 6-11 who are in school	69%	74%	80%	3,308 person(s)
Total boys aged 6-11 who are not in school	31%	26%	20%	841 person(s)

Note 1: Percentage is calculated on the basis of the total number of children within 6-11 year age group for the first 3 rows and for the total girls and the total boys aged 6-11 yrs.

Note 2: Number of girls aged 6-11 who are in & not in school is calculated against the total number of girls aged 6-11 yrs. Number boys, 6-11 yrs who are in & not in school are calculated against the total number of boys aged 6-11 yrs.

3.1.8 Percentage of 6-11 year old Children not in School, by Commune, in 2008



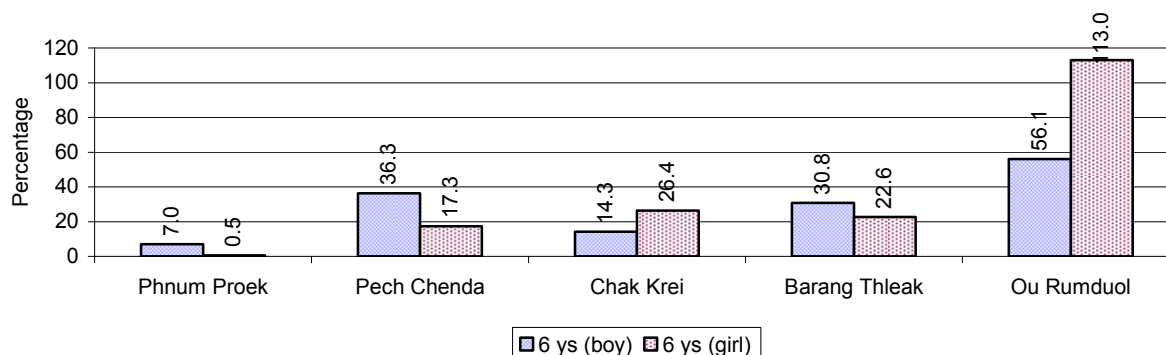
Note: calculated on the basis of the total number of children within 6-11 year age group in the commune.

3.1.9 Enrolment of 6 year old Children over 3 years

Description	2006 %	2007 %	2008	
			%	Number
Total % and number of children aged 6 years old	5%	4%	4%	2,350 person(s)
Total % of children aged 6 years old in school	55%	60%	68%	1,600 person(s)
Total % of children aged 6 years old not in school	45%	40%	32%	750 person(s)

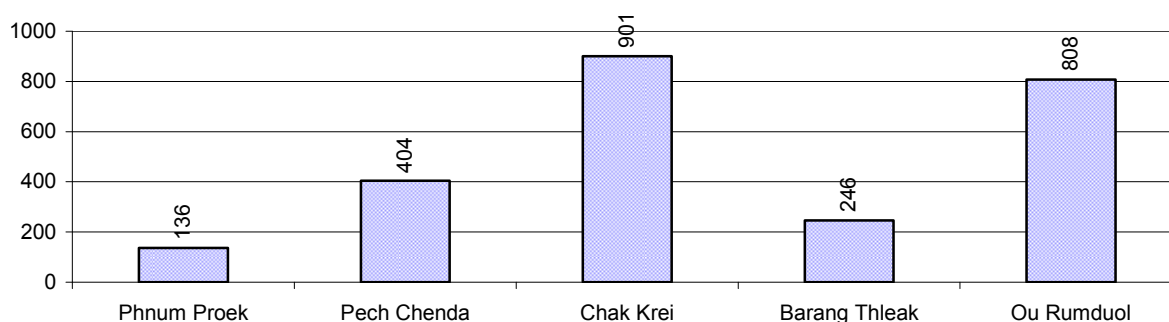
Note: First row calculated as a percentage of total population. Second and third row calculated as a percentage of the total number of 6 year olds.

3.1.10 Percentage of 6 year old Children not in School, by Commune, in 2008



Note: Calculated as a percentage of total 6 year old population

3.1.11 Number of 5 year old Children in each Commune in 2008

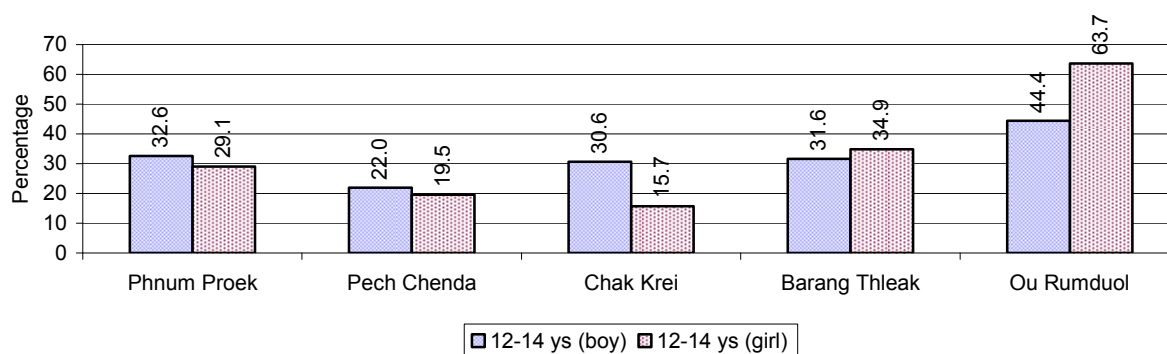


3.1.12 Enrolment at Lower Secondary Level over 3 years

Description	2006 %	2007 %	2008	
			%	Number
Total children aged 12-14 years old	9%	9%	8%	4,591 person(s)
Children aged 12-14 years old in school	67%	70%	69%	3,190 person(s)
Children aged 12-14 years old not in school	33%	30%	31%	1,401 person(s)
Total girls aged 12-14 years old	9%	9%	8%	2,182 person(s)
Girls aged 12-14 years old in school	64%	74%	70%	1,538 person(s)
Girls aged 12-14 years old not in school	36%	26%	30%	644 person(s)
Total boys aged 12-14 years old	9%	9%	8%	2,409 person(s)
Boys aged 12-14 years old in school	70%	67%	69%	1,652 person(s)
Boys aged 12-14 years old not in school	30%	33%	31%	757 person(s)

Note: Percentage is calculated on the basis of number of the total number of children within 12-14 yrs group, except for the first row of each section which is calculated on the basis of the total population.

3.1.13 Percentage of 12-14 year olds not in School, by Commune, in 2008



Note: Calculated as a percentage of the total 12-14 year old population in each commune

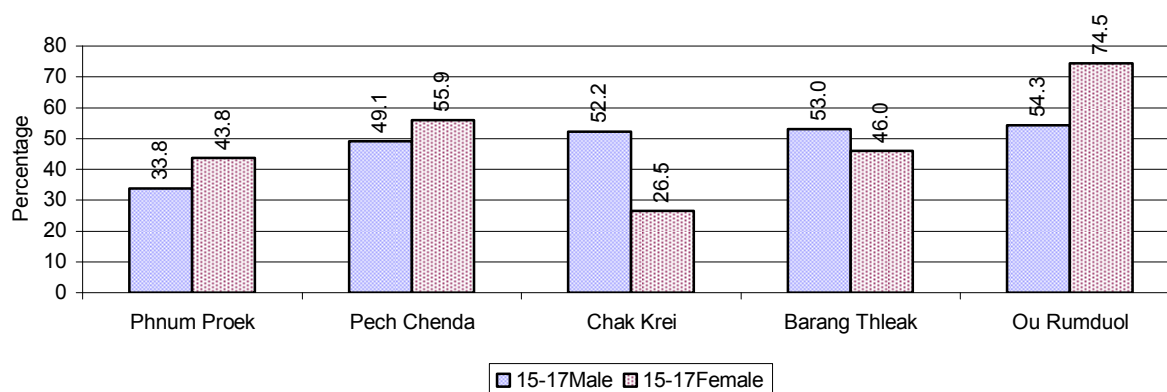
3.1.14 Upper Secondary Schools over 3 years

Description	2006	2007	2008
Number of upper secondary schools	0 school(s)	1 school(s)	1 school(s)
Number of upper secondary school rooms	0 room(s)	4 room(s)	10 room(s)
Number of upper secondary classes	0 class(es)	1 class(es)	11 class(es)
Number of upper secondary teachers	0 person(s)	1 person(s)	21 person(s)
Ratio of 15-17 yr olds to number of school	N/A	4,725	5,013
Ratio of 15-17 yr olds to number of school room	N/A	1,181	501
Ratio of 15-17 yr olds to number of classes	N/A	4,725	456
Ratio of 15-17 yr olds to number of teacher	N/A	4,725	239

3.1.15 Enrolment of 15-17 year old teenagers over 3 years

Description	2006	2007	2008
Number of teenage, 15-17 years old	4,315 person(s)	4,725 person(s)	5,013 person(s)
Number of teenage, 15-17 years old, who are not studying	2,282 person(s)	2,224 person(s)	2,416 person(s)
Percentage of teenage, 15-17 years old not studying	53%	47%	48%

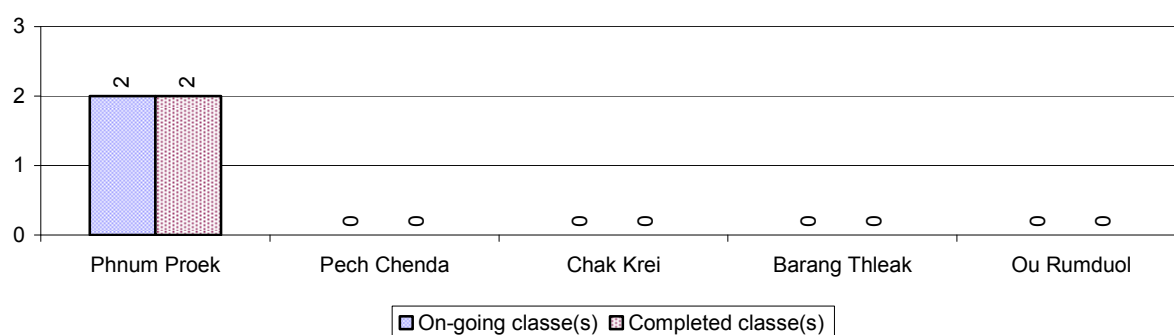
3.1.16 Percentage of 15-17 year old Teenagers not at School, by Commune, in 2008



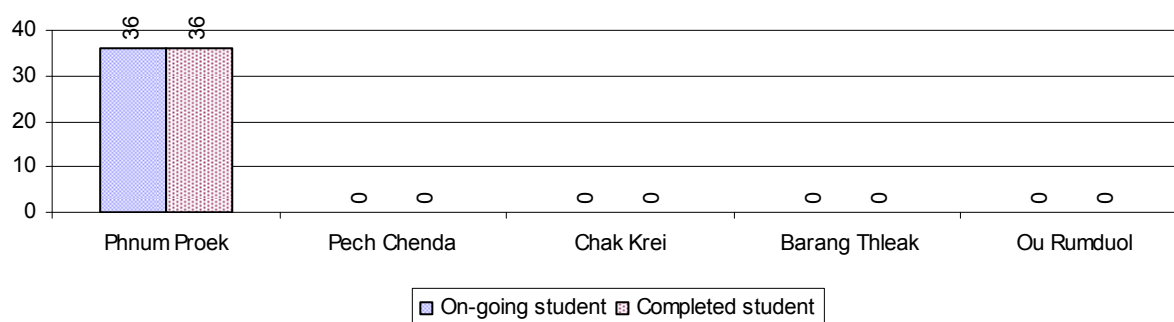
3.1.17 Literacy Classes as of 2008

Literacy classes	Organized by:		Other Program(s)	Total
	PDoEYS	NGOs		
Number of On-going literacy classes	2 class(es)	0 class(es)	0 class(es)	2 class(e(s)
Number of literacy students in on-going classes	36 person(s)	0 person(s)	0 person(s)	36 person(s)
Completed literacy class(es)	2 classes	0 classes	0 classes	2 classes
Number of literacy students that have completed literacy classes	36 person(s)	0 person(s)	0 person(s)	36 person(s)
Number of students that passed	36 person(s)	0 person(s)	0 person(s)	36 person(s)

3.1.18 Number of on-going and completed Literacy Classes, by Commune, in 2008



3.1.19 Students of on-going & completed Literacy Classes, by Commune, in 2008

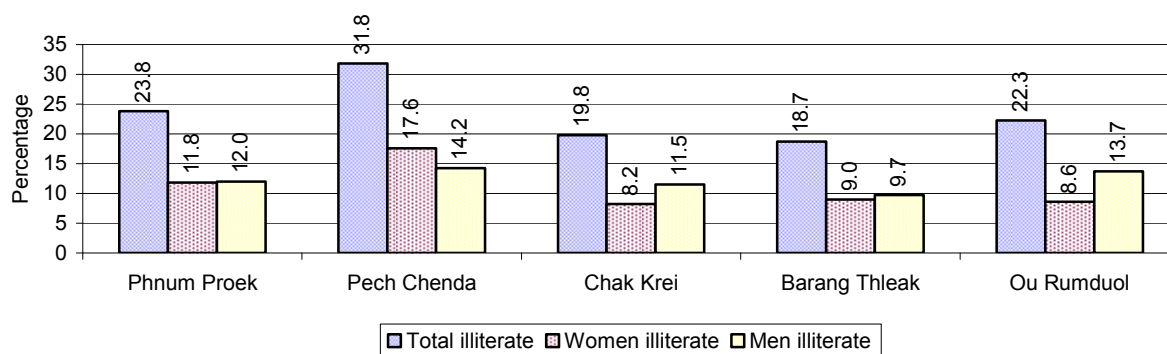


3.1.20 Percentage of illiterate People between 15-60, over 3 years

Illiteracy Status	2006 %	2007 %	2008	
			%	Number
Illiterate people, 15-60 years old	19%	21%	23%	7,405 person(s)
Illiterate females, 15-60 years old	9%	10%	11%	3,498 person(s)
Illiterate people, 15-17 years old	18%	18%	19%	959 person(s)
Illiterate females, 15-17 years old	8%	7%	8%	377 person(s)
Illiterate people, 18-24 years old	17%	20%	21%	1,587 person(s)
Illiterate females, 18-24 years old	8%	9%	10%	780 person(s)
Illiterate people, 25-60 years old	20%	23%	25%	4,859 person(s)
Illiterate females, 25-60 years old	10%	12%	12%	2,341 person(s)

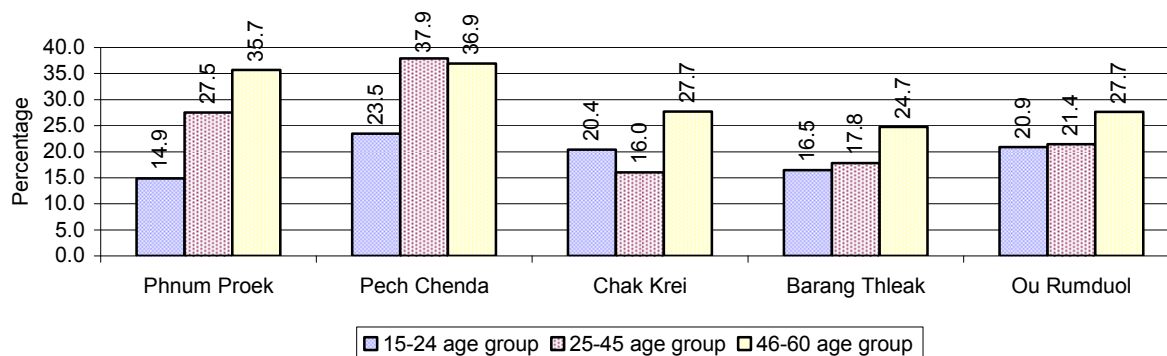
Note: Percentage is calculated on the basis of number of people in age each group.

3.1.21 Percentage illiterate People among 15-60 yrs old, by Commune, in 2008



Note: Percentages are calculated on the basis of number of people in that age group.

3.1.22 Percentage illiterate People for 15-24 yrs, 25-45 yrs and 46-60 yrs, by Commune, in 2008



Note: Percentage of illiterate people in each age group is calculated on the basis of number of people in that age group.

3.2 Health

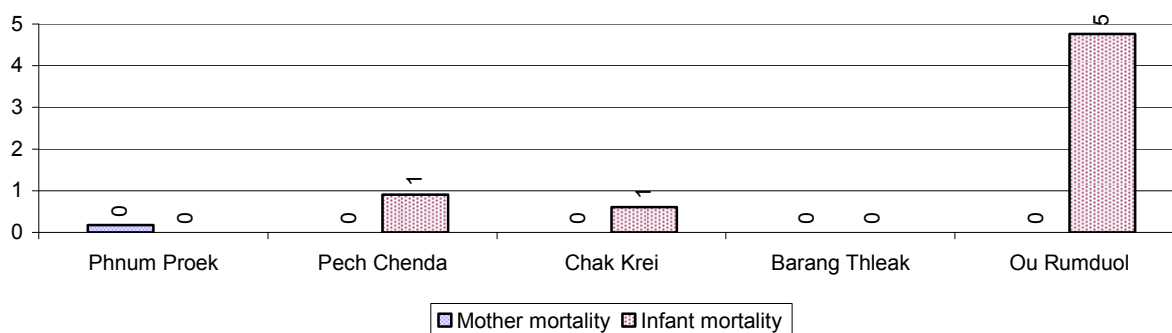
3.2.1 Health Situation of Women and Children, over 3 years

Description	2006	2007	2008
Number families with a birth during the year	840 families	718 families	870 families
Number of women who had their baby delivered by a TBA	438 person(s)	432 person(s)	459 person(s)
Percentage of women who had their baby delivered by a TBA	52 %	60 %	53 %
Number of women who had their baby delivered by a midwife	402 person(s)	286 person(s)	411 person(s)
Percentage of women had their baby delivered by a midwife	48 %	40 %	47 %
Number of mothers who died within 1 month of giving birth	6 person(s)	6 person(s)	1 person(s)
Mothers who died within 1 month of giving birth per 100,000 families having a delivery	714	836	115
Number of infants born during the year	840	718	870

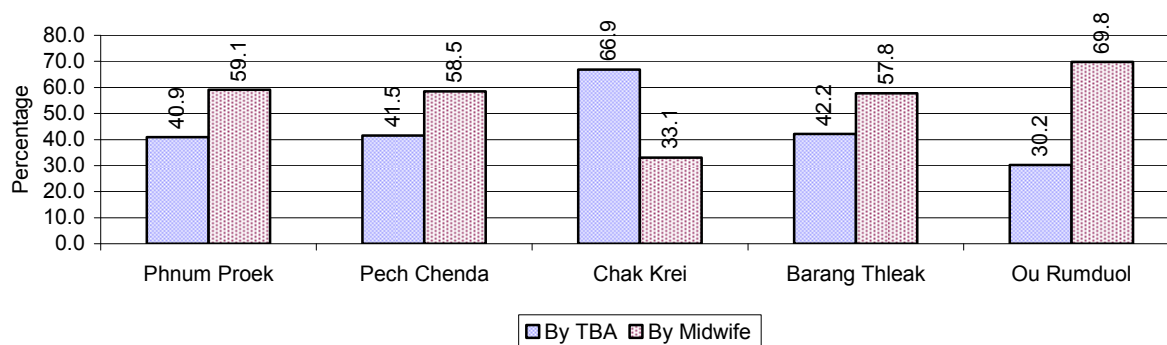
Description	2006	2007	2008
	person(s)	person(s)	person(s)
Number of Infants who died within 1 month	16 person(s)	2 person(s)	6 person(s)
Infants mortality within 1 month per 1,000 births	19	3	7
Number of children who died below the age of 5.	24 person(s)	10 person(s)	12 person(s)
Number of infants, aged 9-12 months, born during the year	767 person(s)	556 person(s)	640 person(s)
Nr. infants, aged 9-12 months, not receiving full immunization	98 person(s)	2 person(s)	54 person(s)
% of 9-12 months infants, not receiving full immunization	13 %	0 %	8 %

Note: TBA = Traditional Birth Attendant

3.2.2 Mothers dying within 0 days to 1 month of giving Birth and Infants dying within 1 month in 2008, by Commune

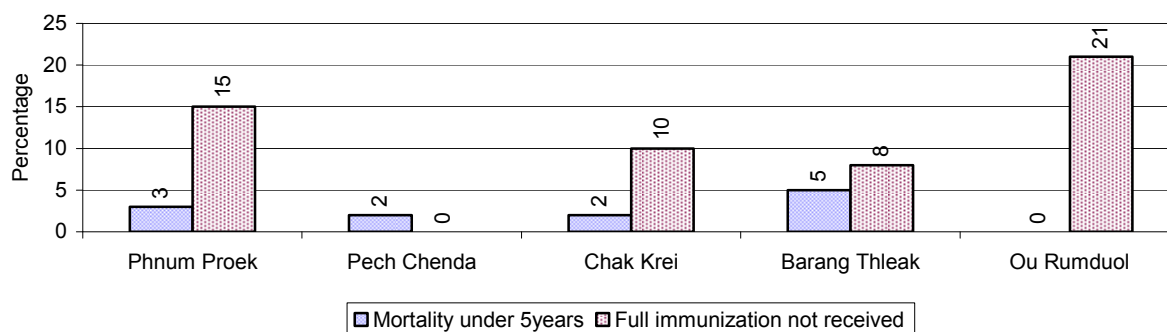


3.2.3 Percentage of Women delivering with a TBA or Midwife, by Commune



Note: Calculated as a percentage of total deliveries

3.2.4 Percentage of Children dying below 5 & of 9-12 months not receiving full Immunization, by Commune, in 2008



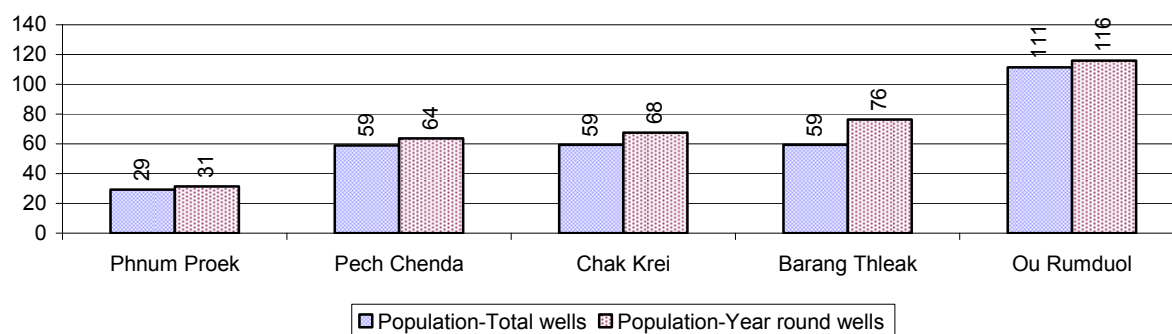
Note: Mortality rate calculated as a percentage of the total 5 year old population. Lack of immunization received calculated as a percentage of the total number 9-12 months olds there are

3.3 Water and Sanitation

3.3.1 Number of different types of Wells over 3 years

Type of wells	Number of wells by year		
	2006	2007	2008
<i>Total number of pumped or mixed wells</i>	778	819	751
Year-round usable pumped or mixed wells	697	733	698
Dry season unusable pump or mixed wells	81	86	53
Pump or mixed wells needing repair/rehabilitation	105	42	75
<i>Total number of ring wells</i>	89	107	201
Year-round usable ring wells	65	86	153
Dry season unusable ring wells	24	21	48
Ring wells needing repair/rehabilitation	21	17	45
<i>Total number of unprotected dug wells</i>	1,259	1,343	951
Year-round usable unprotected dug wells	1,030	1,118	745
Dry season unusable unprotected dug wells	229	225	206

3.3.2 Ratio of People to Wells, by Commune, in 2008

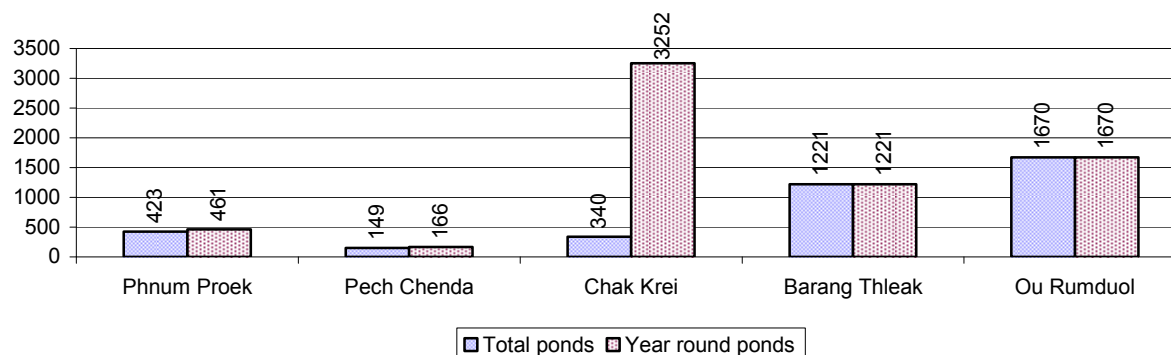


Note: Year-round wells excluding unprotected wells

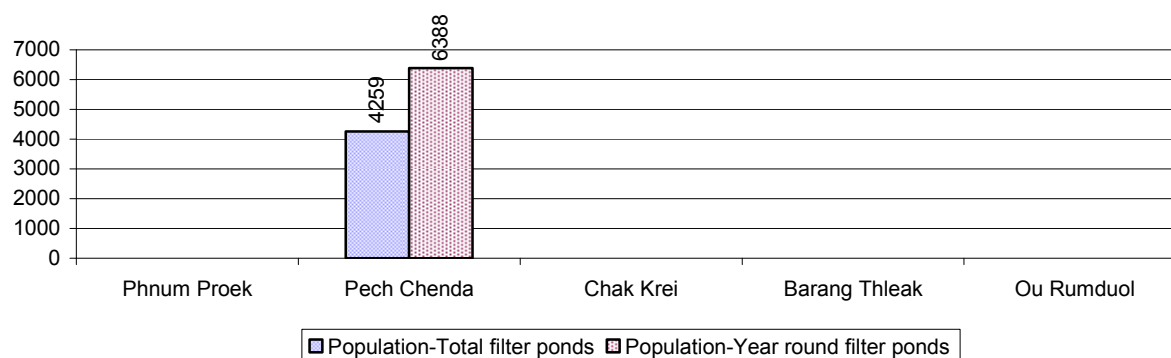
3.3.3 Potable Ponds over 3 years

Type of Pond	2006	2007	2008
<i>Total number of normal-type ponds</i>	60 pond	72 pond	175 pond
Year-round usable normal-type ponds	24 pond	28 pond	105 pond
Dry season unusable normal-type ponds	36 pond	44 pond	70 pond
Normal-type ponds needing repair/rehabilitation	39 pond	36 pond	43 pond
<i>Total number of filter ponds</i>	25 pond	20 pond	3 pond
Year-round usable filter ponds	14 pond	10 pond	2 pond
Filter ponds, dry season unusable	11 pond	10 pond	1 pond
Filter ponds needing repair/rehabilitate	11 pond	10 pond	1 pond

3.3.4 Ratio of People to normal Ponds, by Commune in 2008



3.3.5 Ratio of People to Filter Ponds, by Commune, in 2008

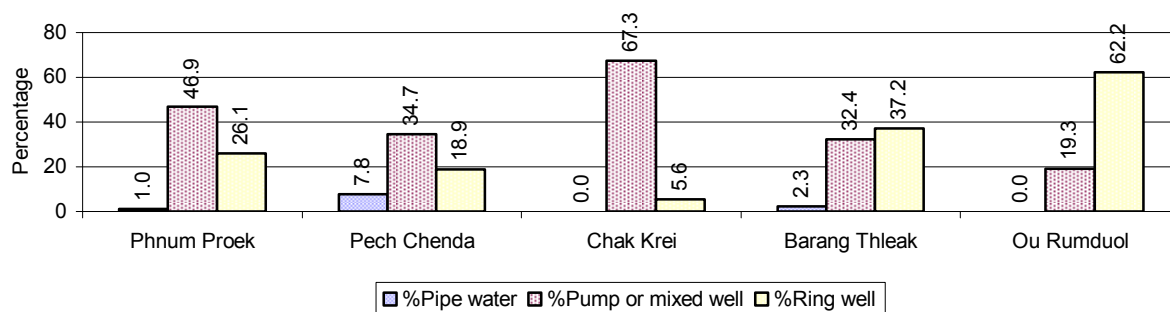


3.3.6 Source of potable Water for Households, over 3 years

Water sources	2006 %	2007 %	2008	
			%	Number
Families using water from purification system	4%	4 %	2 %	258 families
Families using water from pump, mixed wells	48%	36 %	45 %	4,945 families
Families using water from ring wells and open dug wells	8%	26 %	24 %	2,583 families
Families using water from pond	4%	10 %	12 %	1,268 families
Families using water from rain water storage	20%	12 %	12 %	1,357 families
Families using water from rivers, lakes, natural ponds and reservoirs	15%	13 %	5 %	504 families

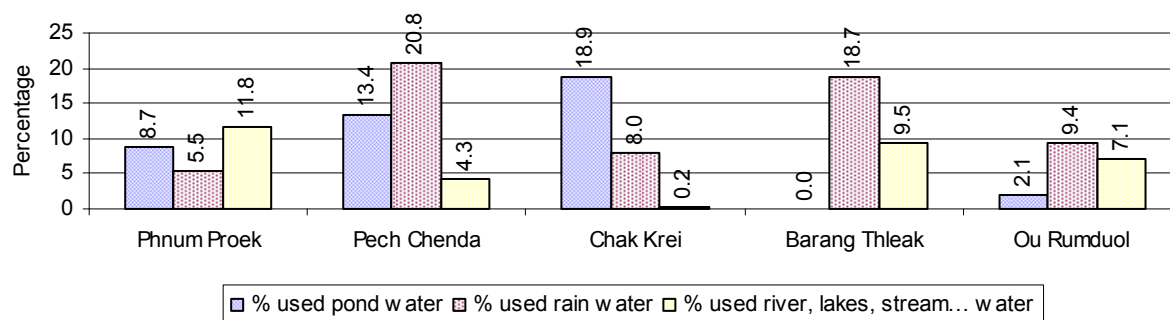
Note: Calculated as a percentage of the total number of families.

3.3.7 Percentage Families using different Water Sources, by Commune, in 2008



Note: Calculated as a percentage of the total number of families in each commune

3.3.8 Percentage Families using Water from Rain Water Storage, Ponds and natural Sources (rivers/lakes/natural ponds/reservoirs), by Commune, 2008



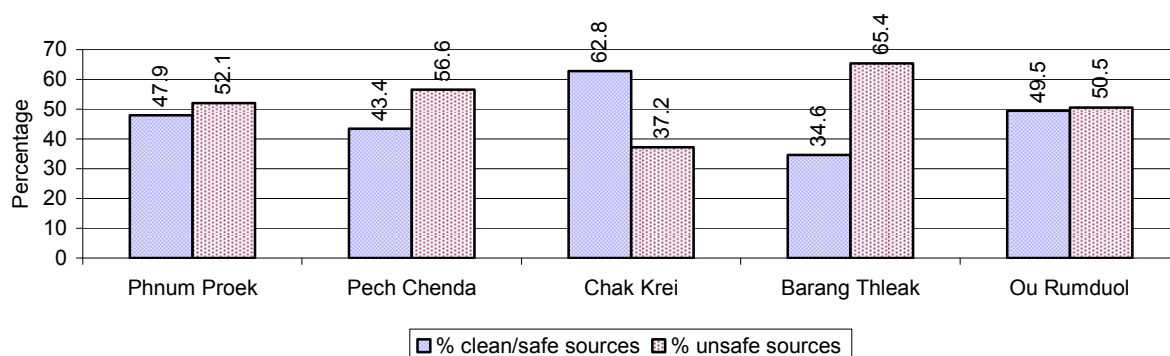
Note: Calculated as a percentage of the total number of families in each commune

3.3.9 Drinking Water Sources in the dry Season over 3 years

Percentage Families that get drinking water from:	2006	2007	2008	
	%	%	%	Number
from clean/safe sources	53 %	64 %	51 %	5,570 families
from unsafe sources	47 %	36 %	49 %	5,345 families

Note: Calculated as a percentage of the total number of families.

3.3.10 Percentage Families using safe and unsafe Water Sources in the dry Season, by Commune, in 2008



Note: Calculated as a percentage of the total number of families in each commune.

3.3.11 Drinking Water Purification by Households, over 3 years

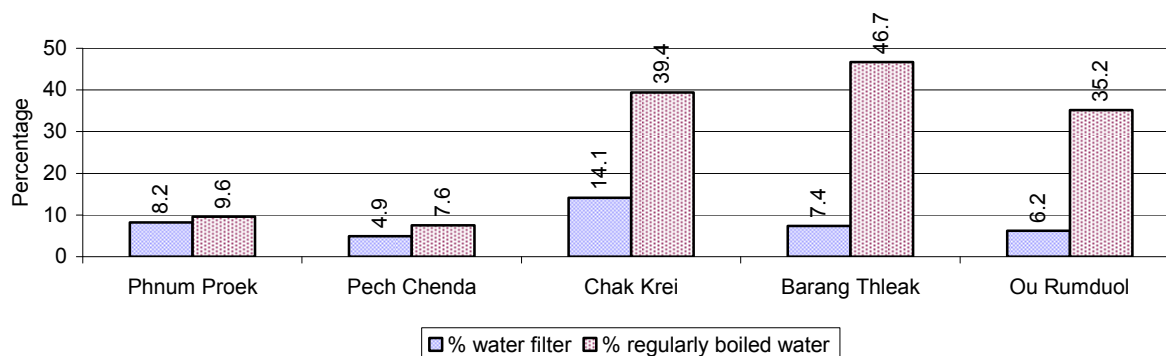
This table shows the different ways families make water safe for drinking.

Families, who:	2006	2007	2008	
	%	%	%	Number
Filter water for drinking	5%	8%	9 %	997 families
Boil water for drinking	31%	22%	28 %	3,091 families

Note: Calculated as a percentage of the total number of families

3.3.12 Percentage Families filtering Water or regularly boiling Water, by Commune, in 2008

This graph shows the different ways families make drinking water safe.



Note: Calculated on as a percentage of the total number of families in each commune.

3.3.13 Families' access to Water, over 3 years

Families access to water	2006	2007	2008	
	%	%	%	Number
Families with water at home or in less then 150m	25%	26%	27 %	2,916 families
Families with water 150m or more away from home	28%	21%	16 %	1,712 families

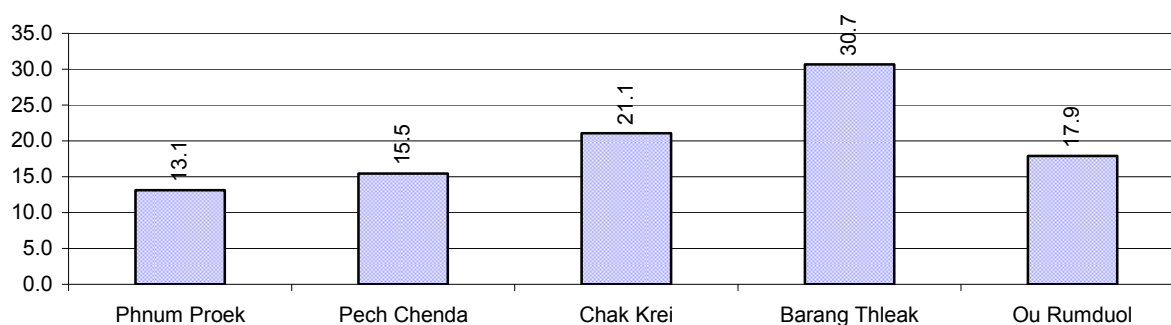
Note: Calculated as a percentage of the total number of families

3.3.14 Ratio of people to Latrines over 3 years

Description	2006	2007	2008	
	Ratio	Ratio	Ratio	Number
Ratio of people to latrines	18.4	17.8	18.6	2,958.0

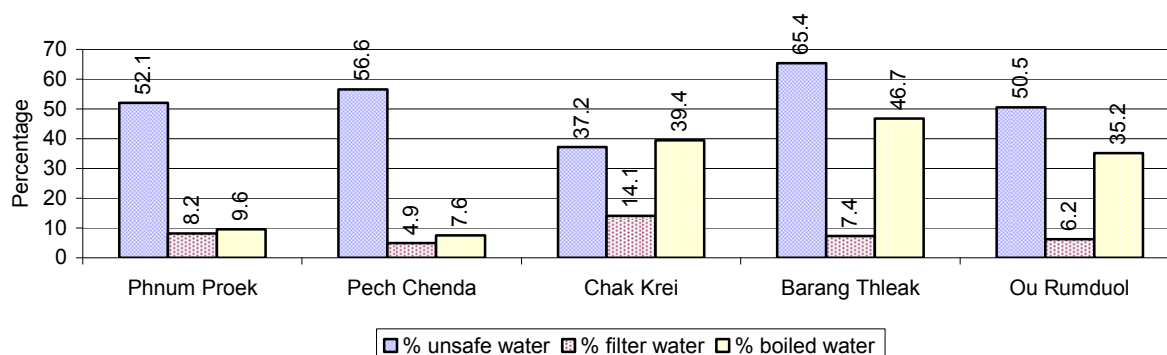
Note: Ratio calculated by dividing the number of houses with latrines by the total population

3.3.15 Ratio of People to Latrines, by Commune, in 2008



Note: Ratio calculated by dividing the number of houses with latrines by the total population in a Commune.

3.3.16 Percentage of Families drinking boiled, filtered or unsafe Water, by Commune, in 2008



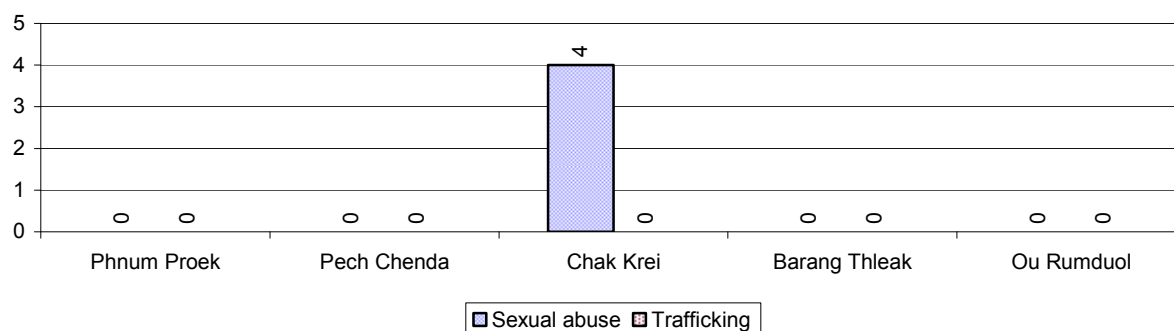
Note: Calculated as a percentage of the total number of families in each commune.

3.4 Vulnerable groups

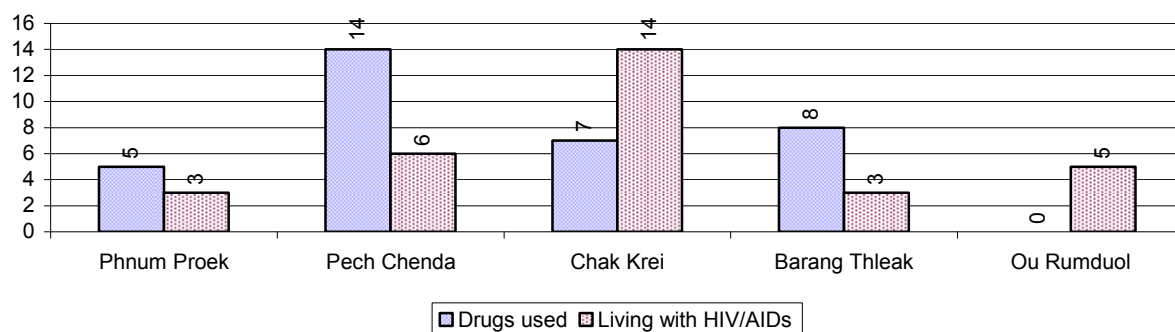
3.4.1 Vulnerable Groups in need of special Protection over 3 years

Vulnerable groups	2006	2007	2008
Victims of sexual abuse	2 person(s)	4 person(s)	4 person(s)
Victims of human trafficking	2 person(s)	0 person(s)	0 person(s)
Families with family member(s) using drugs	20 families	22 families	34 families
Families with family member(s) living with HIV/AIDS	29 families	25 families	31 families
Children under 18 yrs old whose parent died of AIDS	46 person(s)	44 person(s)	62 person(s)
Orphaned/abandoned children under 18 yrs old (all cases)	293 person(s)	124 person(s)	322 person(s)
Elderly persons without guardian	54 person(s)	85 person(s)	99 person(s)
Disabled people able to earn an income	53 person(s)	56 person(s)	65 person(s)
Disabled people unable to earn an income	47 person(s)	34 person(s)	53 person(s)
Disabled people under 18 yrs old	20 person(s)	4 person(s)	10 person(s)
Victims of natural disasters	3,311 families	2,752 families	3,128 families
Victims of land mines and unexploded weapons	83 person(s)	30 person(s)	34 person(s)

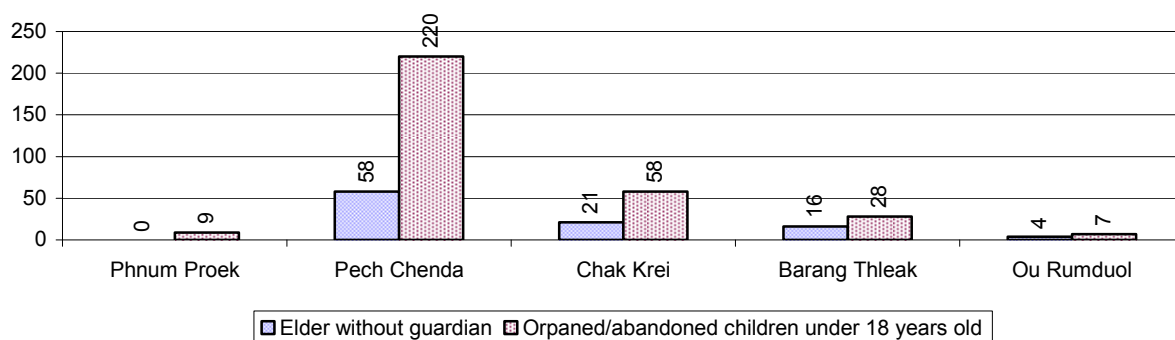
3.4.2 Registered Victims of sexual Abuse or Trafficking, by Commune, for 2008



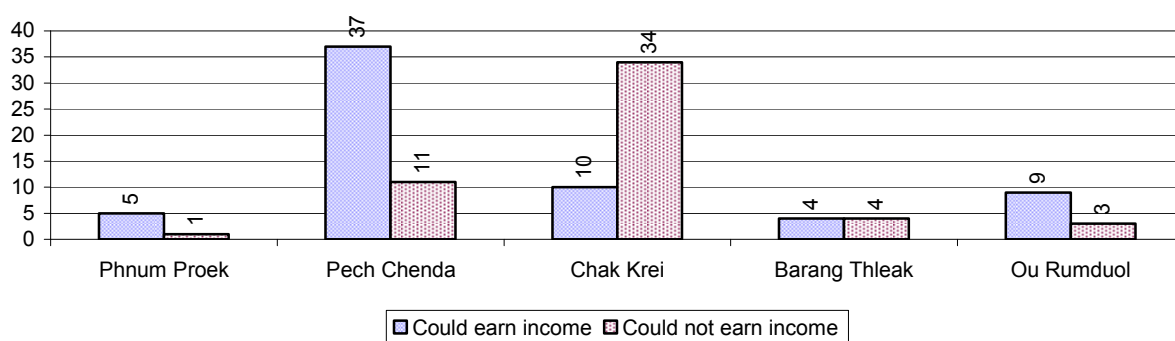
3.4.3 Registered Families with Member(s) using Drugs or living with HIV/AIDS, by Commune, for 2008



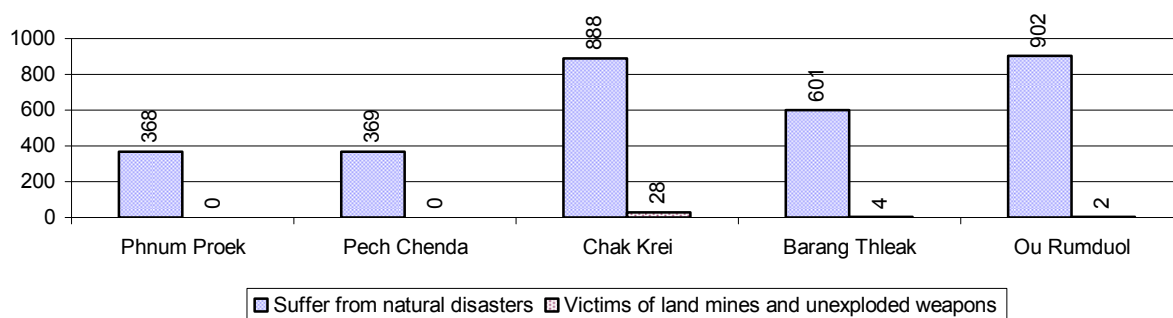
3.4.4 Elderly Persons without a Guardian and orphaned/abandoned Children under 18 years old, by Commune, for 2008



3.4.5 Number of disabled People who could or could not earn an Income, by Commune, for 2008



3.4.6 Number of Families who suffered from natural Disasters, and number of Victims of Land Mines and unexploded Weapons, by Commune, in 2008



3.5 Migration

3.5.1 Migration over 3 years

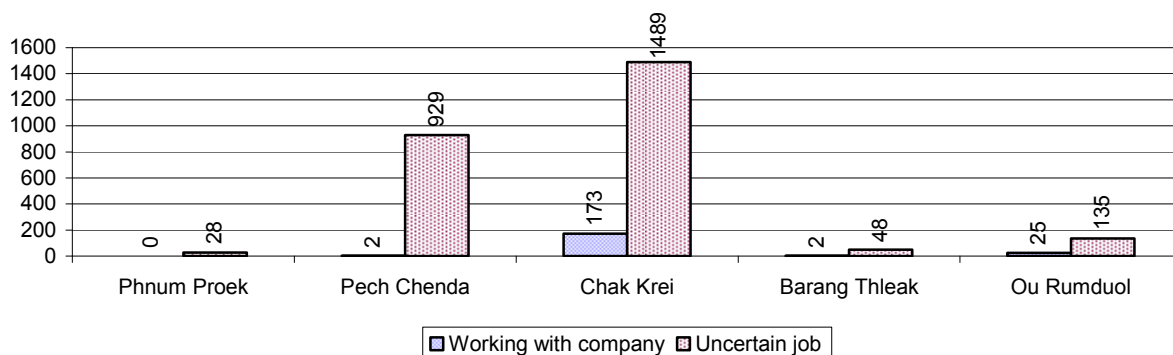
Description	2006	2007	2008
Number of families permanently in-migrated	226 families	134 families	294 families
Total number of people	985 person(s)	552 person(s)	1,119 person(s)
Total number of female	498 person(s)	266 person(s)	457 person(s)
Number of families permanently out-migrated	248 families	188 families	298 families
Total number of people	931 person(s)	899 person(s)	1,022 person(s)
Total number of female	487 person(s)	411 person(s)	521 person(s)
Number of families staying temporarily	466 families	186 families	268 families
Total number of people	1,768 person(s)	812 person(s)	924 person(s)
Total number of female	908 person(s)	429 person(s)	477 person(s)

3.5.2 Job Migration

Description	2006	2007	2008
Number of people migrated to work with company/factory	0%	1%	1%
Number of people migrated to work, but have uncertain jobs	10%	11%	10%
			202 persons
			2,629 persons

Note: Calculated as a percentage of the total population of 18-60 year olds

3.5.3 Number of People working outside their home Villages in a Company/Factory or with an uncertain Job in 2008

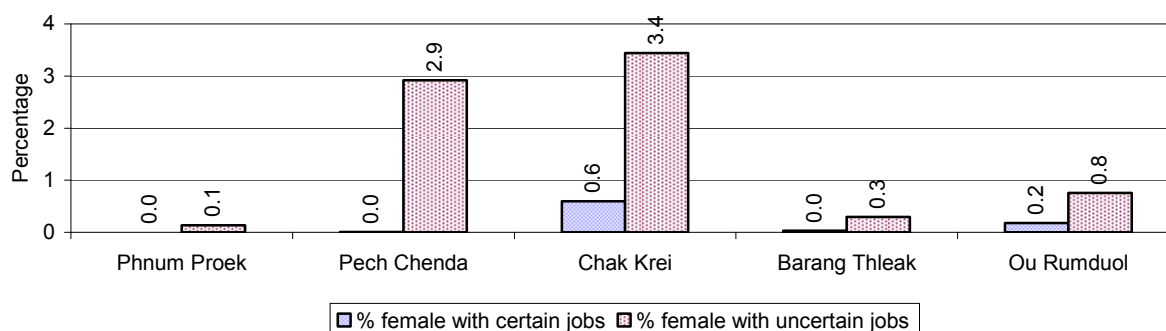


3.5.4 Female migration over 3 years

Description	2006 %	2007 %	2008	
			%	Number
Total number of migrants	4.7%	5.2%	5.1%	2,831 person(s)
Number of female migrants	2.0%	2.4%	2.5%	1,398 person(s)
Total number of migrants, who go to work with company/factory (with certain jobs)	0.2%	0.3%	0.4%	202 person(s)
Number of female migrants with certain jobs	0.2%	0.2%	0.3%	153 person(s)
Total number of migrants with uncertain jobs	4.5%	5.0%	4.8%	2,629 person(s)
Number of female migrants with uncertain jobs	1.8%	2.2%	2.3%	1,245 person(s)

Note: Calculated as a percentage of the total population

3.5.5 Percentage female Migrants with certain and uncertain Jobs, by Commune, in 2008



Note: Calculated as a percentage of the total population of the commune

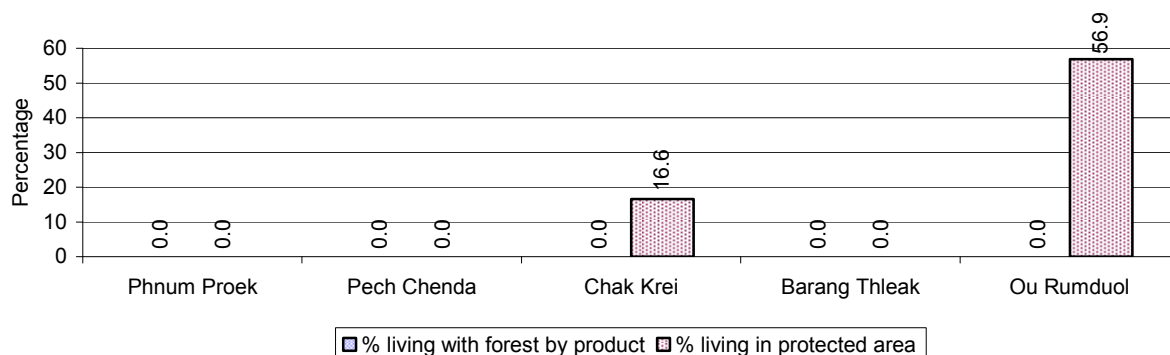
4 Natural Resources and Environment (NRE)

4.1 Families involved with NRE issues over 3 years

Description	2006 %	2007 %	2008	
			%	Number
Families living with forest by products	0 %	0 %	0 %	0 families
Families living in a protected area	24 %	13 %	15 %	1,656 families
Houses with access to garbage collection service	0 %	0 %	0 %	0 families
Families affected by environmental pollution	1 %	1 %	1 %	134 families
Families using chemical fertilizer	24 %	13 %	14 %	1,483 families
Families using chemical pesticide	79 %	78 %	75 %	8,170 families

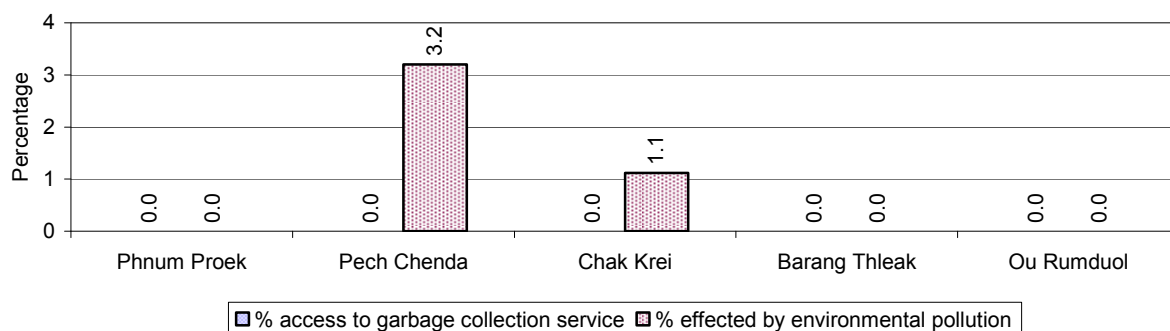
Note: Calculated as a percentage of the total number of families

4.2 Percentage of Families involved with Natural Resource issues, by Commune, for 2008



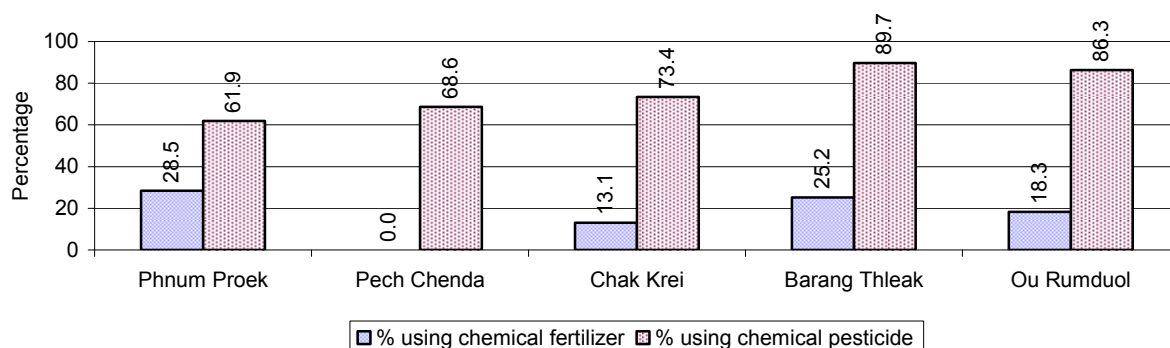
Note: Calculated as a percentage of the number of families in each commune

4.3 Percentage Houses with access to Garbage collection and Families affected by environmental Pollution, by Commune, for 2008



Note: Garbage collection is calculated as a percentage of the total number of houses in each commune and families affected by environmental pollution is calculated as a percentage of the total number of families in each commune.

4.4 Percentage Families using chemical Fertilizer and chemical Pesticides, by Commune, for 2008



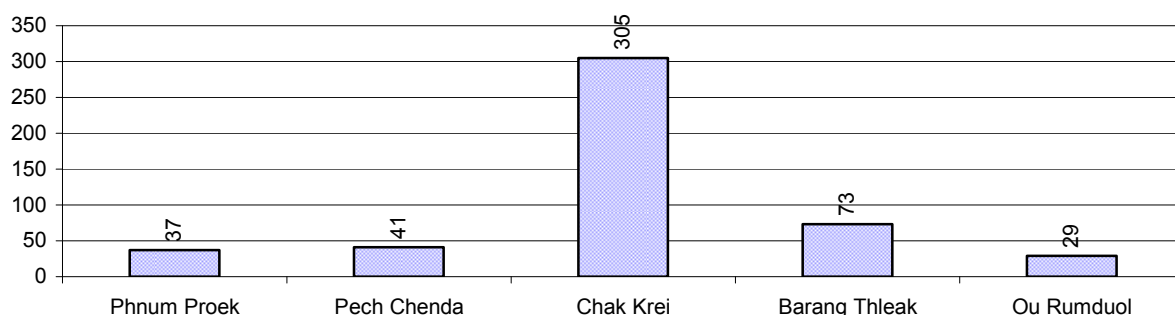
Note: Calculated as a percentage of the total number of families in each commune

5 Administration and Security

5.1 Birth Registration across 3 years

Description	2006	2007	2008
Number of infants to be registered	824 person(s)	716 person(s)	864 person(s)
Number of unregistered infants the year	177 person(s)	288 person(s)	485 person(s)
Percentage of infants unregistered	21 %	40 %	56 %

5.2 Number of unregistered Infants born in 2008, by Commune

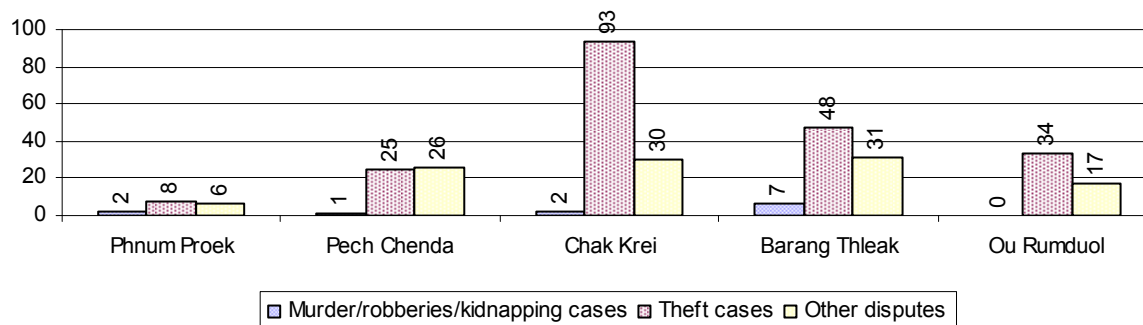


5.3 Registered criminal Cases over 3 years

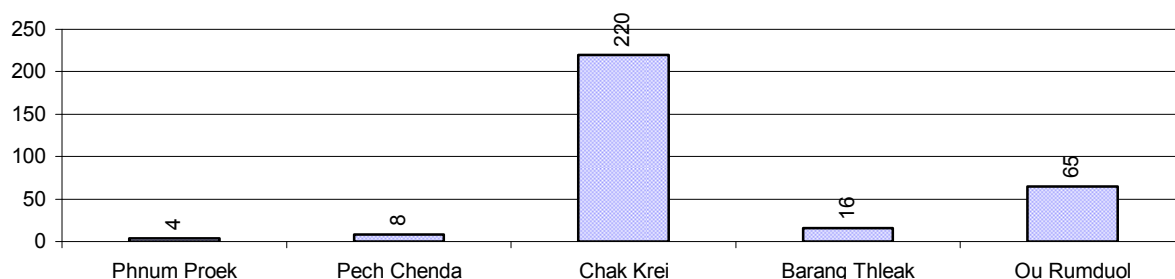
Description	2006	2007	2008
Murders, robberies and kidnapping cases	9 case(s)	12 case(s)	10 case(s)
Theft cases	120 case(s)	325 case(s)	305 case(s)
land dispute cases	183 case(s)	530 case(s)	313 case(s)
Other disputes cases	168 case(s)	91 case(s)	137 case(s)

Note: this reflects only registered criminal cases

5.4 Registered criminal Cases per 10,000 people, by Commune, for 2008



5.5 Number of registered Land Disputes, by Commune, in 2008

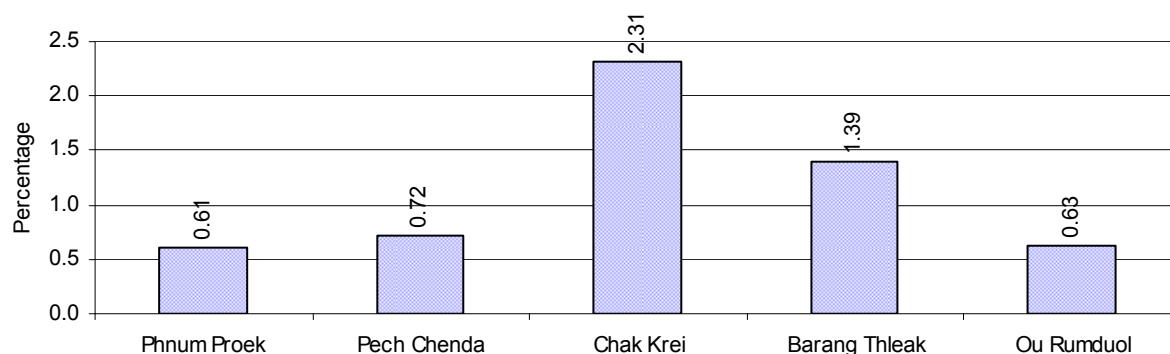


6 Gender

6.1 Registered Domestic Violence over 3 years

Description		2006	2007	2008
Families experiencing domestic violence		142 families	161 families	148 families(s)
% families experiencing domestic violence		1 %	2 %	1 %
Domestic violence cases reported by village chiefs		36 case(s)	56 case(s)	196 case(s)
Type	Physical violence	8 case(s)	12 case(s)	43 case(s)
	Sexual violence	2 case(s)	0 case(s)	2 case(s)
	Mental violence	10 case(s)	22 case(s)	64 case(s)
	Household economic violence	16 case(s)	22 case(s)	87 case(s)
Number of administrative decisions on domestic violence		36 case(s)	26 case(s)	29 case(s)
% of administrative decisions on domestic violence		100 %	46 %	15 %

6.2 Percentage of registered cases of Families experiencing domestic Violence, by Commune, in 2008



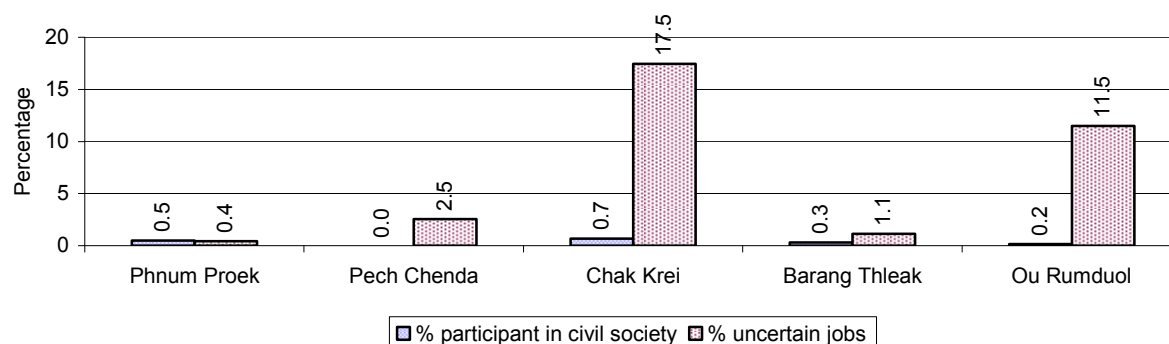
Note: Calculated as a percentage of the total number of families in each commune

6.3 Women's involvement over 3 years

Description	2006 %	2007 %	2008	
			%	Number
People participating in civil society	1%	1%	1%	425 person(s)
Women participating in civil society	1%	0%	0%	211 person(s)
People, 18-60 yrs, with uncertain/irregular jobs	4%	18%	18%	4,889 person(s)
Women, 18-60 yrs, with uncertain/irregular jobs	2%	7%	9%	2,522 person(s)

Note: Participation can be in NGOs, CBOs, credit groups, women's unions, parties and other civil society organizations. The first section is calculated as a percentage of the total population. The second section is calculated as a percentage of the total 18-60 year old population.

6.4 Percentage of Female Participants in Civil Society and of 18-60 year women with uncertain Jobs, by Commune, in 2008



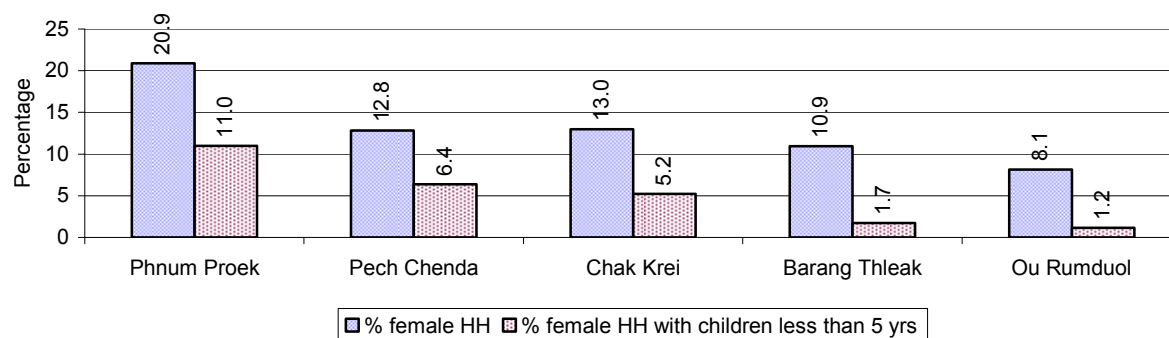
Note: Percentage of female participants in civil society is calculated as a percentage of the total population per commune. The percentage of 18-60 years old women with uncertain jobs is calculated as a percentage of the total 18-60 year old population per commune.

6.5 Female-headed Households over 3 years

Families with:	2006	2007	2008	
	%	%	%	Number
Households in which a woman is the family head	13%	14%	13%	1,394 families
Households in which a woman is the family head with children of less than 5 yrs	5%	6%	5%	555 families

Note: Calculated as a percentage of the total number of families

6.6 Percentage female-headed Households and with Children of less than 5 years old, by Commune, in 2008



Note: Calculated as a percentage of the total number of families in each commune
HH: Headed Household

7 Indigenous People in the District

7.1 Ethnic Minorities in the District over 3 years

Race of indigenous	2006		2007		2008	
	# families	# population	# families	# population	# families	# population
Phnong	0 families	0 person(s)	0 families	0 person(s)	0 families	0 person(s)
Kouy	0 families	0 person(s)	0 families	0 person(s)	0 families	0 person(s)
Stieng	0 families	0 person(s)	0 families	0 person(s)	0 families	0 person(s)
Mil	0 families	0 person(s)	0 families	0 person(s)	0 families	0 person(s)
Kroal	0 families	0 person(s)	0 families	0 person(s)	0 families	0 person(s)
Thmorn	0 families	0 person(s)	0 families	0 person(s)	0 families	0 person(s)
Khaonh	0 families	0 person(s)	0 families	0 person(s)	0 families	0 person(s)
Tompouonn	0 families	0 person(s)	0 families	0 person(s)	0 families	0 person(s)
Charay	0 families	0 person(s)	0 families	0 person(s)	0 families	0 person(s)
Kroeung	0 families	0 person(s)	0 families	0 person(s)	0 families	0 person(s)
Kavet	0 families	0 person(s)	0 families	0 person(s)	0 families	0 person(s)
Saouch	0 families	0 person(s)	0 families	0 person(s)	0 families	0 person(s)
Lun	0 families	0 person(s)	0 families	0 person(s)	0 families	0 person(s)
Kachak	0 families	0 person(s)	0 families	0 person(s)	0 families	0 person(s)
Praov	0 families	0 person(s)	0 families	0 person(s)	0 families	0 person(s)
Others	0 families	0 person(s)	0 families	0 person(s)	0 families	0 person(s)
Total	0 families	0 person(s)	0 families	0 person(s)	0 families	0 person(s)

Note: "Others" refer to other ethnic groups which are not listed.

7.2 Other Minorities in the District over 3 years

Minority	2006		2007		2008	
	# families	# population	# families	# population	# families	# population
Khmer Islamic	18 families	106 person(s)	7 families	74 person(s)	26 families	120 person(s)
Vietnamese	0 families	0 person(s)	3 families	16 person(s)	4 families	19 person(s)
Laos	0 families	0 person(s)	0 families	0 person(s)	0 families	0 person(s)

Note: Number of indigenous and minority population are additional data, so some village may not recorded.

SECTION C: PLANS AND PROJECTS

8 Priorities and Plans

8.1 Priorities of Commune Councils for 2009 in the District by Sector

The District Priority Activity Matrix (DPAM) data are taken from the CDPD. The DPAM is used for the District Integration Workshop (DIW), to show what kind of projects the commune has proposed in their Commune Investment Plan (CIP) for 2009. Donors, departments and other agencies then consider which projects they want to support and which projects they are not interested in. This results in Temporary Agreements between the Commune Council and the Supporter (NGO, Department, private donor, etc), as shown in table 8.2

No.	Project Name	Phnum Proek	Pech Chenda	Chak Krei	Barang Thleak	Ou Rumduol	Req.Project
		21101	21102	21103	21104	21105	Total
Economic							
1	Chemical and pesticide application training		2 training	24 person			2
2	Fruit tree cultivation training		4 training				1
3	Mixed farming system training	280 family					2
4	IPM training			200 person	360 person		2
5	Subsidiary cropping technique training	240 family		90 person			2
6	Farmer field days organizing			2 Course/year			1
7	Animal vaccination request	3 time					1
8	Animal raising training		4 training				1
9	Cow raising training	1 training					1
10	Fruit trees seedling request		1600 Tree			6 Team	2
11	Agricultural tools request					6 Team	1
12				300 m	2500 m	3000 m	3
13		6000 m	4200 m				3
14		8 place					1
15			2000 m	1494 m	18000 m	1000 m	4
16			2000 m				1
17					2 place		1
18				25 m			1
19	Cash credit	258 family	25 Team	15 Team	3 Team	6 Team	5
20	Chemical fertilizer credit request				400 T		1
21	Crop seed credit				500 T	200 T	2
22	Cow bank			2 Course/year			1
23	Livestock bank		10 Head	200 family	18 Head	6 Head	5
24	Saving group association strengthening			20 person			1

District Data Book 2009: Development Plans and Projects

No.	Project Name	Phnum Proek	Pech Chenda	Chak Krei	Barang Thleak	Ou Rumduol	Req.Project
		21101	21102	21103	21104	21105	Total
25	Market place creation/construction				9 Team		1
Social							
1	Family planning	2 time				1 training	2
2	Reproductive health awareness education	8 time	4 training	4 Course/year	12 Month	4 training	7
3	HIV/AIDS awareness education			11 Course/year			1
4	HIV/AIDS infected person assistance	12 Month	2 time				2
5	Children immunization provision		3 time			3 time	2
6	Children and women vaccination	12 Month			12 Month		2
7	Health center staff training			12 time			1
8	Tuberculosis treatment accessibility	12 Month					1
9	Mosquito nets distribution/treatment	2 time	2 time		3 time	2 time	4
10	Maternal health care education	2 time	3 training		6 Course/year		3
11	Latrine construction		50 toilet	30 toilet	486 toilet	50 toilet	4
12		8 place	24 well		10 well	10 well	4
13	School building/furniture		3 building				1
14	Junior high school construction				1 building	1 building	2
15					1 building		1
16	School materials support to poor pupils		3 time				1
17	Artificial limbs/handcart provision/repair	45 person					1
18	Food/materials support to disabled family	20 family				2 time	2
19	Emergency relief for the poor	150 family					1
NREM							
1	Environmental awareness and law education	2 time	2 training	11 Course/year			3
2	Tree plantation project	600 Tree					2
3	Community forestry activities support	6 Team		11 Time			2
4	Forest protection strengthening					6 Team	1
5	Wildlife protection enforcement		2 training		3 time		2
6	Temple/cultural ancient protection strengthening					1000 m	1
7	Waste control measurement		2 training		2 training		2
Administration and Security							
1	Administration and commune law training	6 person					1
2	Commune/district workshop/meeting support			1 place			1
3	Village level capacity building				3 time		1
4	CC forum organizing			1 time			1

District Data Book 2009: Development Plans and Projects

No.	Project Name	Phnum Proek	Pech Chenda	Chak Krei	Barang Thleak	Ou Rumduol	Req.Project
		21101	21102	21103	21104	21105	Total
5	Human rights committee meeting			1 Month			1
6	Commune office construction/renovation					1 building	1
7	Office supply for commune admin operation					1 set	1
8	Gambling control/elimination activation	3 time	12 time	11 Time			3
9	Gangs gathering educated for local security					2 training	1
10	Drug business/use prevention		3 training		3 training	1 training	3
11	Abused/violated/illegal acts quelled activation		12 time			5 training	2
12	Ammunition and weapons law education		2 training	11 place	3 time		3
13	Temporary dwellers management/control		12 time				1
14	Tough group control activation			12 Month			1
15	Family/temporary dweller record book provision				4 time		1
16	Demining project	20 ha	10 ha		1 ha		4
17	Law/regulation dissemination			5 Course/year			1
18	Penal and civil law dissemination	120 person					1
Gender							
1	Gender mainstreaming concept training		4 training	4 Course/year		4 training	3
2	Gender mainstreaming in CIP	60 person	2 training	1 person			3
3	Gender training for CC				6 time		1
4	Gender concept/equity mainstreaming				12 Month		1
5	CCWCs strengthening/activation			12 person			1
6	Women vocational training	2 training	2 training				2
7	Law against domestic violence dissemination	1 time	2 training	1 Course/year	1 training	1 training	5
8	Law against trafficking dissemination				6 training	1 training	2
9	Trafficking of women/children control activity strengthening	2 training	1 training	2 Course/year			3

Source: CDPD – District Priority Matrix

8.2 Temporary Agreements by Commune, for 2009²

At the District Integration Workshop (DIW) the Supporters (donors, agencies, private donors, NGOs, etc.) identify which projects/activities they would like to support or they put forward their own projects to be implemented in a particular commune. Once there is agreement between Commune Councils and Supporters on specific projects a **Temporary Agreement** is signed by the commune and the Supporter to show their mutual commitment to the identified projects/activities.

It is important to keep in mind that such Temporary Agreements do not necessarily result in implementation.

8.2.1 Temporary Agreements for 2009 as per DIW 2008 for Commune: Phnum Proek

Commune GIS	Commune	Temporary Agreements				Supporter	Funding Source	Listed in CIP befor DIW
		Project Name	Quantity	Unit	Est.Cost (K.Riels)			
Economic								
21101	Phnum Proek		1	time	3200	Department of Agriculture Forestry and Fisheries		<input type="checkbox"/>
21101	Phnum Proek		15	family	3932	Operation des Enfants Battambang		<input type="checkbox"/>
21101	Phnum Proek		15	family	3932	Operation des Enfants Battambang		<input type="checkbox"/>
21101	Phnum Proek		15	family	3932	Operation des Enfants Battambang		<input type="checkbox"/>
21101	Phnum Proek		4	demo	356	Department of Agriculture Forestry and Fisheries		<input type="checkbox"/>
21101	Phnum Proek		1	demo	100	Department of Agriculture Forestry and Fisheries		<input type="checkbox"/>
21101	Phnum Proek		2500	m	25000	Department of Rural Development		<input checked="" type="checkbox"/>
21101	Phnum Proek		1	demo	228	Department of Agriculture Forestry and Fisheries		<input type="checkbox"/>
21101	Phnum Proek		1	demo	164	Department of Agriculture Forestry and Fisheries		<input type="checkbox"/>
21101	Phnum Proek		1	time	400	Department of Agriculture Forestry and Fisheries		<input type="checkbox"/>
21101	Phnum	Subsidiary cropping technique training	1	training	200	Department of Agriculture		<input checked="" type="checkbox"/>

² Not all the data from the CDPD has been translated to English, this has resulted in some cells in the TA tables being blank.

District Data Book 2009: Development Plans and Projects

Commune GIS	Commune	Temporary Agreements				Supporter	Funding Source	Listed in CIP before DIW
		Project Name	Quantity	Unit	Est.Cost (K.Riels)			
	Proek					Forestry and Fisheries		
21101	Phnum Proek		1	time	576	Department of Agriculture Forestry and Fisheries		<input type="checkbox"/>
Social								
21101	Phnum Proek	Family planning	12	Month	1040	Department of Health		✓
21101	Phnum Proek	HIV/AIDS infected person assistance	12	Month	1040	Department of Health		✓
21101	Phnum Proek	Food/materials support to disabled family	12	Month	1040	Operation des Enfants Battambang		✓
21101	Phnum Proek	Maternal health care education	12	Month	1040	Department of Health		✓
21101	Phnum Proek	Children and women vaccination	12	Month	1040	Department of Health		✓
21101	Phnum Proek	Reproductive health awareness education	12	Month	1040	Department of Health		✓
21101	Phnum Proek		12	Month	3280	Buddhist For Development		<input type="checkbox"/>
21101	Phnum Proek	Tuberculosis treatment accessibility	12	Month	1040	Department of Health		✓
21101	Phnum Proek		12	Month	10000	Department of Health		<input type="checkbox"/>
21101	Phnum Proek		12	Month	10000	Department of Health		<input type="checkbox"/>
21101	Phnum Proek		12	Month	80000	Department of Health		<input type="checkbox"/>
21101	Phnum Proek		4	training	1200	Provincial Local Administration Unit		<input type="checkbox"/>
NREM								
21101	Phnum Proek	Community forestry activities support	2	Team	2500	Forest administration		✓
21101	Phnum Proek	Tree plantation project	1000	Tree	2500	Forest administration		✓
Gender								

Commune GIS	Commune	Temporary Agreements				Supporter	Funding Source	Listed in CIP before DIW
		Project Name	Quantity	Unit	Est.Cost (K.Riels)			
21101	Phnum Proek		15	family	3932	Operation des Enfants Battambang		<input type="checkbox"/>
21101	Phnum Proek		12	Month	3280	Buddhist For Development		<input type="checkbox"/>
21101	Phnum Proek		1	time	560	Department of Agriculture Forestry and Fisheries		<input type="checkbox"/>
21101	Phnum Proek		4	training	800	Provincial Local Administration Unit		<input type="checkbox"/>
21101	Phnum Proek		1	time	100	Department of Women		<input type="checkbox"/>

8.2.2 Temporary Agreements for 2009 as per DIW 2008 for Commune: Pech Chenda

Commune GIS	Commune	Temporary Agreements				Supporter	Funding Source	Listed in CIP befor DIW
		Project Name	Quantity	Unit	Est.Cost (K.Riels)			
Economic								
21102	Pech Chenda		1	training	164	Department of Agriculture Forestry and Fisheries		<input type="checkbox"/>
21102	Pech Chenda		1	training	164	Department of Agriculture Forestry and Fisheries		<input type="checkbox"/>
21102	Pech Chenda		4	Team	1424	Department of Agriculture Forestry and Fisheries		<input type="checkbox"/>
21102	Pech Chenda		12	person	576	Department of Agriculture Forestry and Fisheries		<input type="checkbox"/>
21102	Pech Chenda		1	demo	228	Department of Agriculture Forestry and Fisheries		<input type="checkbox"/>
21102	Pech Chenda		1	demo	400	Department of Agriculture Forestry and Fisheries		<input type="checkbox"/>
21102	Pech Chenda		3500	m	25139	Department of Rural Development		<input type="checkbox"/>
Social								
21102	Pech Chenda		12	Month	8000	Department of Health		<input type="checkbox"/>

District Data Book 2009: Development Plans and Projects

Commune GIS	Commune	Temporary Agreements				Supporter	Funding Source	Listed in CIP befor DIW
		Project Name	Quantity	Unit	Est.Cost (K.Riels)			
21102	Pech Chenda		12	Month	5504	Operation des Enfants Battambang		<input type="checkbox"/>
21102	Pech Chenda		12	Month	5504	Operation des Enfants Battambang		<input type="checkbox"/>
21102	Pech Chenda		12	Month	5504	Operation des Enfants Battambang		<input type="checkbox"/>
21102	Pech Chenda	Reproductive health awareness education	1	training	1040	Provincial Local Administration Unit		✓
21102	Pech Chenda		12	Month	6000	Department of Health		<input type="checkbox"/>
21102	Pech Chenda		12	Month	5504	Operation des Enfants Battambang		<input type="checkbox"/>
21102	Pech Chenda		12	Month	10000	Department of Health		<input type="checkbox"/>
21102	Pech Chenda		12	Month	10000	Department of Health		<input type="checkbox"/>
21102	Pech Chenda		12	Month	10000	Department of Health		<input type="checkbox"/>
21102	Pech Chenda		12	Month	10000	Department of Health		<input type="checkbox"/>
21102	Pech Chenda		12	Month	10000	Department of Health		<input type="checkbox"/>
21102	Pech Chenda	Reproductive health awareness education	1	time	1040	Department of Health		✓
21102	Pech Chenda	HIV/AIDS infected person assistance	1	time	1040	Department of Health		✓
21102	Pech Chenda	School materials support to poor pupils	1	time	1500	Operation des Enfants Battambang		✓
Administration and Security								
21102	Pech Chenda		12	Month	1640	Buddhist For Development		<input type="checkbox"/>
Gender								
21102	Pech Chenda	Gender mainstreaming concept training	1	training	100	Provincial Local Administration Unit		✓

Commune GIS	Commune	Temporary Agreements				Supporter	Funding Source	Listed in CIP before DIW
		Project Name	Quantity	Unit	Est.Cost (K.Riels)			
21102	Pech Chenda		1	training	100	Department of Women		<input type="checkbox"/>
21102	Pech Chenda		4	demo	280	Department of Agriculture Forestry and Fisheries		<input type="checkbox"/>
21102	Pech Chenda		1	demo	480	Department of Agriculture Forestry and Fisheries		<input type="checkbox"/>
21102	Pech Chenda		12	Month	1640	Buddhist For Development		<input type="checkbox"/>

8.2.3 Temporary Agreements for 2009 as per DIW 2008 for Commune: Chak Krei

Commune GIS	Commune	Temporary Agreements				Supporter	Funding Source	Listed in CIP before DIW
		Project Name	Quantity	Unit	Est.Cost (K.Riels)			
Economic								
21103	Chak Krei		1	demo	400	Department of Agriculture Forestry and Fisheries		<input type="checkbox"/>
21103	Chak Krei		4	km	1604.76	Department of Rural Development		<input type="checkbox"/>
21103	Chak Krei		1	demo	164	Department of Agriculture Forestry and Fisheries		<input type="checkbox"/>
21103	Chak Krei		4	demo	1424	Department of Agriculture Forestry and Fisheries		<input type="checkbox"/>
21103	Chak Krei	Subsidiary cropping technique training	10	person	400	Department of Agriculture Forestry and Fisheries		✓
21103	Chak Krei		4	demo	32000	Department of Agriculture Forestry and Fisheries		<input type="checkbox"/>
21103	Chak Krei		1	demo	228	Department of Agriculture Forestry and Fisheries		<input type="checkbox"/>
Social								
21103	Chak Krei		12	Month	10000	Department of Health		<input type="checkbox"/>
21103	Chak Krei	Reproductive health awareness education	12	Month	2500	Department of Agriculture Forestry and Fisheries		✓

District Data Book 2009: Development Plans and Projects

Commune GIS	Commune	Temporary Agreements				Supporter	Funding Source	Listed in CIP befor DIW
		Project Name	Quantity	Unit	Est.Cost (K.Riels)			
21103	Chak Krei		25	family	6552	Operation des Enfants Battambang		<input type="checkbox"/>
21103	Chak Krei		25	family	6552	Operation des Enfants Battambang		<input type="checkbox"/>
21103	Chak Krei		25	family	6552	Operation des Enfants Battambang		<input type="checkbox"/>
21103	Chak Krei		25	family	6552	Operation des Enfants Battambang		<input type="checkbox"/>
21103	Chak Krei		25	family	6552	Operation des Enfants Battambang		<input type="checkbox"/>
21103	Chak Krei		12	Month	1640	Buddhist For Development		<input type="checkbox"/>
21103	Chak Krei		12	Month	80000	Department of Health		<input type="checkbox"/>
21103	Chak Krei		12	Month	10000	Department of Health		<input type="checkbox"/>
21103	Chak Krei		12	Month	10000	Department of Health		<input type="checkbox"/>
21103	Chak Krei		12	Month	10000	Department of Health		<input type="checkbox"/>
21103	Chak Krei		12	Month	8000	Department of Health		<input type="checkbox"/>
21103	Chak Krei		12	Month	6000	Department of Health		<input type="checkbox"/>
21103	Chak Krei		1	Month	12000	Department of Health		<input type="checkbox"/>
21103	Chak Krei		12	Month	10000	Department of Health		<input type="checkbox"/>
21103	Chak Krei		4	Course/year	1200	Provincial Local Administration Unit		<input type="checkbox"/>
Gender								
21103	Chak Krei		1	demo	100	Department of Women		<input type="checkbox"/>
21103	Chak Krei		12	Month	1640	Buddhist For Development		<input type="checkbox"/>
21103	Chak Krei		1	demo	280	Department of Agriculture Forestry and Fisheries		<input type="checkbox"/>
21103	Chak Krei		1	demo	960	Department of Agriculture Forestry and Fisheries		<input type="checkbox"/>

8.2.4 Temporary Agreements for 2009 as per DIW 2008 for Commune: Barang Thleak

Commune GIS	Commune	Temporary Agreements				Supporter	Funding Source	Listed in CIP before DIW
		Project Name	Quantity	Unit	Est.Cost (K.Riels)			
Economic								
21104	Barang Thleak		4	demo	32000	Department of Agriculture Forestry and Fisheries		<input type="checkbox"/>
21104	Barang Thleak		14	family	3668	Operation des Enfants Battambang		<input type="checkbox"/>
21104	Barang Thleak		1500	m	41568	Department of Rural Development		<input type="checkbox"/>
21104	Barang Thleak		1	demo	164	Department of Agriculture Forestry and Fisheries		<input type="checkbox"/>
21104	Barang Thleak		1	demo	164	Department of Agriculture Forestry and Fisheries		<input type="checkbox"/>
21104	Barang Thleak	IPM training	20	person	200	Department of Agriculture Forestry and Fisheries		✓
21104	Barang Thleak		1	demo	228	Department of Agriculture Forestry and Fisheries		<input type="checkbox"/>
21104	Barang Thleak		1	demo	400	Department of Agriculture Forestry and Fisheries		<input type="checkbox"/>
21104	Barang Thleak		4	demo	1424	Department of Agriculture Forestry and Fisheries		<input type="checkbox"/>
Social								
21104	Barang Thleak		12	Month	10000	Department of Health		<input type="checkbox"/>
21104	Barang Thleak	Maternal health care education	12	Month	1040	Department of Health		✓
21104	Barang Thleak	Reproductive health awareness education	12	Month	1040	Provincial Local Administration Unit		✓
21104	Barang Thleak		14	family	3668	Operation des Enfants Battambang		<input type="checkbox"/>
21104	Barang Thleak		14	family	3668	Operation des Enfants Battambang		<input type="checkbox"/>
21104	Barang Thleak		14	family	3668	Operation des Enfants Battambang		<input type="checkbox"/>

District Data Book 2009: Development Plans and Projects

Commune GIS	Commune	Temporary Agreements				Supporter	Funding Source	Listed in CIP before DIW
		Project Name	Quantity	Unit	Est.Cost (K.Riels)			
21104	Barang Thleak		14	family	3668	Operation des Enfants Battambang		<input type="checkbox"/>
21104	Barang Thleak		12	Month	8000	Department of Health		<input type="checkbox"/>
21104	Barang Thleak		12	Month	12000	Department of Health		<input type="checkbox"/>
21104	Barang Thleak		12	Month	10000	Department of Health		<input type="checkbox"/>
21104	Barang Thleak		12	Month	10000	Department of Health		<input type="checkbox"/>
21104	Barang Thleak		12	Month	10000	Department of Health		<input type="checkbox"/>
21104	Barang Thleak		4	Month	1200	Provincial Local Administration Unit		<input type="checkbox"/>
21104	Barang Thleak		12	Month	10000	Department of Health		<input type="checkbox"/>
21104	Barang Thleak		12	Month	8000	Department of Health		<input type="checkbox"/>
21104	Barang Thleak		12	Month	6000	Department of Health		<input type="checkbox"/>
21104	Barang Thleak		12	Month	1640	Buddhist For Development		<input type="checkbox"/>
Gender								
21104	Barang Thleak		12	Month	1640	Buddhist For Development		<input type="checkbox"/>
21104	Barang Thleak		14	family	3668	Department of Women		<input type="checkbox"/>
21104	Barang Thleak		4	Month	800	Provincial Local Administration Unit		<input type="checkbox"/>
21104	Barang Thleak		1	Month	280	Department of Agriculture Forestry and Fisheries		<input type="checkbox"/>
21104	Barang Thleak		1	Month	480	Department of Agriculture Forestry and Fisheries		<input type="checkbox"/>

8.2.5 Temporary Agreements for 2009 as per DIW 2008 for Commune: Ou Rumduol

Commune GIS	Commune	Temporary Agreements				Supporter	Funding Source	Listed in CIP before DIW
		Project Name	Quantity	Unit	Est.Cost (K.Riels)			
Economic								
21105	Ou Rumduol		1	time	480	Department of Agriculture Forestry and Fisheries		<input type="checkbox"/>
21105	Ou Rumduol		1	demo	160	Department of Agriculture Forestry and Fisheries		<input type="checkbox"/>
21105	Ou Rumduol		1	demo	164	Department of Agriculture Forestry and Fisheries		<input type="checkbox"/>
21105	Ou Rumduol		4	Course/year	1424	Department of Agriculture Forestry and Fisheries		<input type="checkbox"/>
21105	Ou Rumduol		1	time	576	Department of Agriculture Forestry and Fisheries		<input type="checkbox"/>
21105	Ou Rumduol		1	demo	228	Department of Agriculture Forestry and Fisheries		<input type="checkbox"/>
21105	Ou Rumduol		4	time	24000	Department of Agriculture Forestry and Fisheries		<input type="checkbox"/>
21105	Ou Rumduol		1	time	400	Department of Agriculture Forestry and Fisheries		<input type="checkbox"/>
21105	Ou Rumduol		1	time	280	Department of Agriculture Forestry and Fisheries		<input type="checkbox"/>
21105	Ou Rumduol		4500	m	329552	Department of Rural Development		✓
21105	Ou Rumduol		1	place	0	Department of Rural Development		<input type="checkbox"/>
Social								
21105	Ou Rumduol	Children immunization provision	12	Month	10000	Department of Health		✓
21105	Ou Rumduol	Family planning	12	Month	80000	Department of Health		✓
21105	Ou Rumduol	Reproductive health awareness education	4	training	1200	Provincial Local Administration Unit		✓
21105	Ou Rumduol		12	Month	12000	Department of Health		<input type="checkbox"/>
21105	Ou		12	Month	10000	Department of Health		<input type="checkbox"/>

District Data Book 2009: Development Plans and Projects

Commune GIS	Commune	Temporary Agreements				Supporter	Funding Source	Listed in CIP before DIW
		Project Name	Quantity	Unit	Est.Cost (K.Riels)			
	Rumduol							
21105	Ou Rumduol		12	Month	10000	Department of Health		<input type="checkbox"/>
21105	Ou Rumduol		12	Month	10000	Department of Health		<input type="checkbox"/>
21105	Ou Rumduol		12	Month	10000	Department of Health		<input type="checkbox"/>
21105	Ou Rumduol		12	Month	80000	Department of Health		<input type="checkbox"/>
21105	Ou Rumduol		1	demo	4980	Operation des Enfants Battambang		<input type="checkbox"/>
21105	Ou Rumduol		1	demo	4980	Operation des Enfants Battambang		<input type="checkbox"/>
21105	Ou Rumduol		1	demo	4980	Operation des Enfants Battambang		<input type="checkbox"/>
21105	Ou Rumduol		1	demo	4980	Operation des Enfants Battambang		<input type="checkbox"/>
21105	Ou Rumduol		12	Month	1640	Buddhist For Development		<input type="checkbox"/>
21105	Ou Rumduol		19	family	800	Operation des Enfants Battambang		<input type="checkbox"/>
21105	Ou Rumduol		12	Month	80000	Department of Health		<input type="checkbox"/>
Gender								
21105	Ou Rumduol		1	time	100	Department of Women		<input type="checkbox"/>
21105	Ou Rumduol	Gender mainstreaming concept training	4	training	800	Provincial Local Administration Unit		✓
21105	Ou Rumduol		12	time	1640	Buddhist For Development		<input type="checkbox"/>

Source: CDPD, District Level Detail TA resulting from DIW

8.3 Outputs, estimated and actual costs of C/S Fund Projects between 2005 and 2008, by Commune

Commune	Project Type	Budget Year	Output		Quantity	Unit	Unit Cost MR	
			Description	Type			Estimate	Actual
Phnum Proek	Rural Transport	2005	Gravel road	New	1.407	Km	17.00	18.96
Phnum Proek	Rural Transport	2005	Single pipe culvert	New	1	Place	1.95	18.96
Phnum Proek	Rural Transport	2006	Double pipe culvert	New	2	Place	4.81	23.78
Phnum Proek	Rural Transport	2006	Single pipe culvert	New	2	Place	2.93	23.78
Phnum Proek	Rural Transport	2006	Gravel road	New	0.941	Km	16.03	23.78
Phnum Proek	Rural Transport	2007	Gravel road	New	1.08	Km	45.13	23.42
Phnum Proek	Rural Transport	2007	Single pipe culvert	New	1	Place	3.52	23.42
Phnum Proek	Rural Transport	2007	Double pipe culvert	New	1	Place	5.81	23.42
Phnum Proek	Rural Transport	2008	Gravel road	New	0.851	Km	21.55	25.96
Phnum Proek	Rural Transport	2008	Single pipe culvert	New	2	Place	4.40	25.96
Pech Chenda	Rural Transport	2005	Concrete bridge (general)	New	1	Place	30.83	29.75
Pech Chenda	Rural Transport	2006	Gravel road	New	1.829	Km	31.00	38.63
Pech Chenda	Rural Transport	2006	Double pipe culvert	New	2	Place	4.81	38.63
Pech Chenda	Rural Transport	2006	Single pipe culvert	New	2	Place	2.82	38.63
Pech Chenda	Rural Transport	2007	Gravel road	New	1.862	Km	34.33	34.71
Pech Chenda	Rural Transport	2008	Single pipe culvert	New	3	Place	8.34	34.16
Pech Chenda	Rural Transport	2008	Gravel road	Repair	1.303	Km	25.81	34.16
Chak Krei	Rural Transport	2005	Gravel road	New	1.95	Km	27.39	31.56
Chak Krei	Rural Transport	2005	Single pipe culvert	New	2	Place	4.16	31.56
Chak Krei	Rural Transport	2006	Single pipe culvert	New	1	Place	3.46	41.42
Chak Krei	Rural Transport	2006	Double pipe culvert	New	2	Place	4.81	41.42
Chak Krei	Rural Transport	2006	Gravel road	New	2.056	Km	33.15	41.42
Chak Krei	Rural Transport	2007	Single pipe culvert	New	1	Place	3.57	42.44
Chak Krei	Rural Transport	2007	Double pipe culvert	New	2	Place	6.02	42.44
Chak Krei	Rural Transport	2007	Gravel road	New	1.927	Km	34.34	42.44
Chak Krei	Rural Transport	2008	Single pipe culvert	New	4	Place	14.68	44.74
Chak Krei	Rural Transport	2008	Gravel road	Upgrade	1.067	Km	29.75	44.74
Barang Thleak	Rural Transport	2005	Gravel road	New	0.797	Km	11.04	11.20
Barang Thleak	Rural Transport	2005	Box culvert (general)	New	1	Place	8.32	8.15
Barang Thleak	Rural Transport	2006	Box culvert (general)	New	1	Place	22.95	21.58
Barang Thleak	Rural Transport	2007	Double pipe culvert	New	1	Place	9.03	26.29
Barang Thleak	Rural Transport	2007	Gravel road	New	1.273	Km	43.02	26.29
Barang Thleak	Rural Transport	2007	Single pipe culvert	New	2	Place	3.64	26.29

Commune	Project Type	Budget Year	Output		Quantity	Unit	Unit Cost MR	
			Description	Type			Estimate	Actual
Barang Thleak	Rural Transport	2008	Triple pipe culvert	New	2	Place	23.10	23.00
Ou Rumduol	Rural Transport	2005	Concrete bridge (general)	Upgrade	1	Place	28.63	20.74
Ou Rumduol	Rural Transport	2006	Triple pipe culvert	New	1	Place	7.01	21.90
Ou Rumduol	Rural Transport	2006	Concrete bridge (general)	New	1	Place	16.29	21.90
Ou Rumduol	Rural Transport	2007	Double pipe culvert	New	1	Place	2.99	26.91
Ou Rumduol	Rural Transport	2007	Gravel road	New	3.195	Km	27.95	26.91
Ou Rumduol	Rural Transport	2008	Gravel road	New	0.959	Km	23.11	30.70
Ou Rumduol	Rural Transport	2008	Double pipe culvert	New	2	Place	7.59	30.70

Source: PID

8.4 Total Expenditure on C/S Fund Projects by sector and commune between 2005 and 2008

Sector	Total Cost in Million Riels				
	Phnum Proek	Pech Chenda	Chak Krei	Barang Thleak	Ou Rumduol
Rural Transport	92.11	137.25	160.16	90.22	100.25

Source: PID

8.5 Actual 2009 C/S Fund projects by Commune

Commune	Project Type	Project Output		Quantity	Unit	Fund Source (Riels)		
		Description	Type			Total	C/S	Local Contribution
Phnum Proek	Rural Transport	Natural Gravel road	Repair	1	km	33,922,000	32,934,300	987,700
Phnum Proek	Rural Transport	Natural Gravel road	Repair	1	km	33,922,000	32,934,300	987,700
Phnum Proek	Rural Transport	Natural Gravel road	Repair	1	km	33,922,000	32,934,300	987,700
Phnum Proek	Rural Transport	Natural Gravel road	Repair	0.578	km	33,922,000	32,934,300	987,700
Pech Chenda	Rural Transport	Earth road	New	2	km	44,198,839	42,911,839	1,287,000
Pech Chenda	Rural Transport	Earth road	New	0.54	km	44,198,839	42,911,839	1,287,000
Pech Chenda	Rural Transport	Single pipe culvert 0.6m diameter	New	1	Place	44,198,839	42,911,839	1,287,000
Pech Chenda	Rural Transport	Single pipe culvert 0.8m diameter	New	1	Place	44,198,839	42,911,839	1,287,000
Pech Chenda	Rural Transport	Single pipe culvert 0.6m diameter	New	1	Place	44,198,839	42,911,839	1,287,000
Barang Thleak	Rural Transport	Natural Gravel road	New	1.69	km	41,323,340	40,263,840	1,059,500
Barang Thleak	Rural Transport	Double pipe culvert 1.0m diameter	New	1	Place	41,323,340	40,263,840	1,059,500
Ou Rumduol	Rural Transport	Natural Gravel road	Repair	2.471	km	39,619,300	38,465,700	1,153,600
Ou Rumduol	Rural Transport	Double pipe culvert 1.0m diameter	New	1	Place	39,619,300	38,465,700	1,153,600

Source: PID

9 District level Projects from 2006 to 2009

District Initiative Projects (DIPs) are funded by Danida, DFID and PSDD (UNDP, DFID and SIDA).

Funding for 2006-2008

Between 2006 and 2008 there were 14 provinces funded by PSDD and 10 by Danida and DFID. The list of provinces and who funded these is below

Danida and DFID funded DIPs:

Kampong Cham	Kampong Speu	Koh Kong	Kratie	Monduliri
Pursat	Ratanakiri	Siem Reap	Sihanoukville	Kep

PSDD funded DIPs:

Banteay Meanchey	Battambang	Kampong Chhnang	Kandal	Phnom Penh
Prey Veng	Svay Rieng	Takeo	Kampong Thom	Preah Vihear
Stung Treng	Kampot	Oddar Meanchey	Pailin	

Funding for 2009

In 2009 there was a change to the number of provinces funded by the two streams. Danida and DFID were still funding the same 10 provinces they had been funding the previous three years, but two more provinces were added *Kampong Thom and Kampot*. Now PSDD funds 12 provinces and Danida and DFID fund 12.

9.1 District Initiative Infrastructure Projects from 2006 to 2009

9.1.1 District Initiative Infrastructure Projects for 2006 to 2008

No District Initiative Infrastructure Projects were implemented in this district for 2006-2008

9.1.2 District Initiative Infrastructure Projects in 2009

No District Initiative Infrastructure Projects have been implemented in this district for 2009

9.2 District Initiative Service Projects from 2006 to 2009

9.2.1 District Initiative Service Projects for 2006 to 2008

No District Initiative Service Projects were implemented in this district for 2006-2008

9.2.2 District Initiative Service Projects in 2009

No District Initiative Service Projects have been implemented in this district for 2009

9.3 Inter Commune Council Projects in 2008 and 2009

9.3.1 ICC Projects in 2008

No ICC projects in this district at this time

9.3.2 ICC Projects in 2009

No ICC projects in this district at this time

Source: ICC project, Ministry of Interior (DoLA), -UNDP project for Local Governance – DDLG

9.4 Other Projects in 2008 and 2009

9.4.1 RPRP

There are no RPRP projects being implemented in this district or province at this time. The RPRP is only being implemented in Svay Rieng and Prey Veng

9.4.1.1 RPRP Projects from 2006 to 2008

No RPRP projects in this district at this time

9.4.1.2 RPRP Projects in 2009

No RPRP projects in this district at this time

9.4.2 Seth Korma

9.4.2.1 Seth Korma 2007

There are no Seth Korma projects being implemented in this district or province at this time.

Source: UNICEF

9.4.2.2 Seth Korma 2008

There are no Seth Korma projects being implemented in this district or province at this time.

Source: UNICEF

9.4.2.3 Seth Korma 2009

There are no Seth Korma projects being implemented in this district or province at this time.

Source: UNICEF

SECTION D: SERVICES AND ORGANIZATIONS

10 Infrastructure

10.1 Length of and Expenditure on Roads in 2008, by District

Roads	BAT	Banan	Thmor Kol	Battambang	Bovel	Ek Phnom	Moung Ressey	Rattanak Mondol
Length of paved road in the district (km)	233	21	40	62	0	17	58	10
Length of unpaved roads in the district (km)	8,048	418.958	293	213	441	134	1,918	195
Amount spent on construction of roads in 2008 (\$)	1,956,677	48187	31,071	1,373,571	141,863	10,114	160,600	28,292
Amount spent on repair and rehabilitation of roads in 2008 (\$)	3,399,766	35833	35,512	2,535,287	53,750	95,398	100,900	14,976
Continue...								
Roads	BAT	Sangker	Samlot	Sampov Loun	Phnom Prek	Kamrieng	Koh Kralor	Ruk Kakiri
Length of paved road in the district (km)	233	23	0	1	0	0	0	0
Length of unpaved roads in the district (km)	8,048	434	1,541	174	189	1,555	55	487
Amount spent on construction of roads in 2008 (\$)	1,956,677	5,650	3,558	29,737	93,931	0	0	30,103
Amount spent on repair and rehabilitation of roads in 2008 (\$)	3,399,766	50,950	159,750	80,000	86,585	80,000	58,325	12,500

Note 1: Please note that these data are not necessarily complete or correct. The data are derived from government agencies at provincial and district level which used different recording systems, did not always have complete data or were, sometimes, less than willing to share their data.

Note 2: Please be aware that these data are incomplete due to the fact that the amounts for the construction, repair and rehabilitation recorded reflect only funds provided by the government, not the contributions by any other parties.

10.2 Scale of and Expenditure on Irrigation in 2008, by District

Irrigation	BAT	Banan	Thmor Kol	Battambang	Bovel	Ek Phnom	Moung Ressey	Rattanak Mondol
Number of irrigation schemes operating in 2008	337	88	118	2	44	10	23	n/a
Total nr of hectares under irrigation in dry season 2008	17,484	2442	7,849	50	999	2,100	2,633	n/a
Total funds spent in 2008 on construction of irrigation systems (\$)	287,438	n/a	36,974	8,452	107,000	n/a	22,012	n/a
Total funds spent in 2008 on rehabilitation/repair of irrigation systems (\$)	193,871	n/a	26,495	4,376	47,000	n/a	72,000	n/a
Total funds spent in 2008 on operation and maintenance (\$)	13,953	6571	5,382	0	2,000	n/a	n/a	n/a
Continue...								
Irrigation	BAT	Sangker	Samlot	Sampov Loun	Phnom Prek	Kamrieng	Koh Kralor	Ruk Kakiri
Number of irrigation schemes operating in 2008	337	39	1	2	1	0	1	8
Total nr of hectares under irrigation in dry season 2008	17,484	1,170	115	100	20	0	n/a	6
Total funds spent in 2008 on construction of irrigation systems (\$)	287,438	113,000	n/a	n/a	n/a	0	n/a	n/a
Total funds spent in 2008 on rehabilitation/repair of irrigation systems (\$)	193,871	n/a	n/a	n/a	n/a	0	n/a	44,000
Total funds spent in 2008 on operation and maintenance (\$)	13,953	n/a	n/a	n/a	n/a	0	n/a	n/a

Note 1: Please note that these data are not necessarily complete or correct. The data are derived from government agencies at provincial and district level which used different recording systems, did not always have complete data or were, sometimes, less than willing to share their data.

Note 2: Please be aware that the data above are incomplete as these only reflect funds provided by the government, not the contributions by farmers or other parties.

10.3 Power Supply in 2008, by District

Electricity	BAT	Banan	Thmor Kol	Battambang	Bovel	Ek Phnom	Moung Ressey	Rattanak Mondol
Total number of electricity connections to households	44,911	1,986	4,076	17,311	4,400	2,197	2,579	688
Total number of electricity connections to agencies, companies, organizations	1,335	3	15	1,200	5	9	14	5
Total volume in KWh of electricity consumed last in 2008	37,887,455	67619	257,630	29,022,560	207,360	293,616	169,287	103,661
Total amount collected from users for consumed electricity (\$)	8,632,022	71260	194,314	7,278,404	108,916	20,297	83,331	390,912
Per capita electricity consumption in 2008 in Kwh	3,375	8.316	254	202	12	96	17	19
Continue...								
Electricity	BAT	Sangker	Samlot	Sampov Loun	Phnom Prek	Kamrieng	Koh Kralor	Ruk Kakiri
Total number of electricity connections to households	44,911	1,330	150	2,804	2,853	4,312	95	130
Total number of electricity connections to agencies, companies, organizations	1,335	11	3	26	21	20	2	1
Total volume in KWh of electricity consumed last in 2008	37,887,455	445,080	90	2,016,878	1,516,188	3,771,886	0	15,600
Total amount collected from users for consumed electricity (\$)	8,632,022	4,530	8,100	72,000	294,040	103,968	0	1,950
Per capita electricity consumption in 2008 in Kwh	3,375	175	48	1,726	349	180	0	288

Note 1: Please note that these data are not necessarily complete or correct. The data are derived from government agencies at provincial and district level which used different recording systems, did not always have complete data or were, sometimes, less than willing to share their data.

Note 2: These data only record electricity provided by electricity companies and does not include homes powered by generators or batteries (for this information see Section B: General Profile, Part 1: General Information; table 1.3.1 and chart 1.3.4).

Note 3: In most provinces electricity is only provided through town-based networks

Note 4: Per capita consumption is calculated by dividing the total volume of electricity produced in 2008 by the number of people living in each district as per the 2008 census (for the provincial data it is calculated against the number of people living in the province)

11 Health Facilities

Please note that the Operational District (health) boundaries are different to the administrative district boundaries. Therefore the data provided here shows the facilities, staff, NGOs etc in each Operational District within the province NOT the administrative district.

Acronyms

Com Cov	Commune Covered	MW2	Secondary Midwives
CPA	Complementary Package of Activities	NU1	Primary Nurse
Dr	Doctor	NU2	Secondary Nurse
FDH	Former District Hospital	OD	Operational District
HC	Health Center	Others	Other Staff
HC (NB)	Health Center no building	PHD	Provincial Health Department
HP	Health Post	Pop 04-05	Population Covered 2004 or 2005
MA	Medical Assistant	RH	Referral Hospital
MPA	Minimum Package of Activities	Vil Cov	Village Covered
MW1	Primary Midwives	VIL-HC	Distance from Village to Health Center

11.1 Health Facilities in the Province, by Operational District

Battambang	OD	RH	HC	HP
Bat Dambang	1	1	22	
Mong Ruessei	1	1	13	
Sampov Luon	1	1	8	
Sangkae	1		15	
Thmor Koul	1	1	17	
Total	5	4	75	0

11.2 Health Facilities and Staff in the province, by Operational District

This table shows health facilities, staff and coverage of health facilities in each operational district.

No	Facility Name	Type	Class	Dr	Ma	Nu2	Nu1	Mw2	Mw1	Others	Com Cov	Vil Cov	Pop. 04-05
Thmor Kou													
1	Ampil Pram Daeum	HC	MPA	0	0	2	2	0	0	2	1	8	9,001
2	Anlong Run	HC	MPA	0	0	1	3	0	0	2	1	5	4,489
3	Bansay Traeng	HC	MPA	0	0	3	1	1	1	0	1	8	9,283
4	Bavel I	FDH	CPA+MPA	2	0	6	3	3	0	9	1	10	12,590
5	Bavel II	HC	MPA	0	0	1	4	1	1	2	0	9	13,329
6	Boeng Pring	HC	MPA	0	0	2	1	0	1	1	1	4	9,570
7	Chrouy Sdau	HC	MPA	0	0	1	0	0	1	3	1	3	9,644
8	Kdol Ta Hen	HC	MPA	0	0	1	4	0	0	2	1	13	10,013
9	Khleang Meas	HC	MPA	0	0	1	0	0	0	5	0	14	10,628
10	Khnach Romeas	HC	MPA	0	0	1	3	0	3	2	1	8	11,791
11	Kouk Khmum	HC	MPA	0	0	2	2	1	0	1	1	8	12,407
12	Lvea	HC	MPA	0	0	1	2	1	0	4	1	12	10,965
13	Ou Ta Ki	HC	MPA	0	0	0	2	3	0	2	1	8	16,186
14	Prey Khpos	HC	MPA	0	0	1	2	2	0	3	1	9	11,067
15	Rung Chrey	HC	MPA	0	0	2	1	1	0	1	1	7	11,469
16	Ta Meun	HC	None MPA	0	0	1	1	0	0	2	1	10	15,748
Total:				2	0	26	31	13	7	41	14	136	178,180
Mong Ruessei													
1	Ta Pung	HC	MPA	0	0	3	2	2	0	0	1	7	14,285
2	Chrey	HC	MPA	0	0	1	1	0	0	4	1	8	11,739
3	Kakaoh	HC	MPA	0	0	0	1	0	1	4	1	7	10,830
4	Kaos Kralor	HC(NB)	None	0	0	0	3	2	2	0	5	41	15,742
5	Kear	HC	None MPA	0	0	0	2	1	1	3	1	11	16,294
6	Moung	HC	MPA	0	0	1	1	0	0	4	1	14	14,210
7	Preaek Chik	HC	None MPA	0	0	0	2	1	3	1	1	10	12,222
8	Prey Svay	HC	MPA	0	0	0	3	0	1	4	1	9	13,196
9	Prey Touch	HC	MPA	0	0	1	3	0	2	0	1	6	9,917
10	Prey Tralach	HC	MPA	0	0	0	3	0	1	3	1	14	20,174
11	Robas Mongkol	HC	MPA	0	0	0	3	0	2	2	1	12	11,324
12	Russei Krang	HC	MPA	0	0	2	3	0	1	2	1	10	14,015

District Data Book 2009: Services and Organizations

No	Facility Name	Type	Class	Dr	Ma	Nu2	Nu1	Mw2	Mw1	Others	Com Cov	Vil Cov	Pop. 04-05
13	Ta Loas	HC	MPA	0	0	1	2	2	2	1	1	9	8,551
Total:				0	0	9	29	8	16	28	17	158	172,499
Sampov Luon													
1	Thipakdei	HC	MPA	0	0	1	3	0	3	1	1	11	8,216
2	Angkor Ban	HC	None MPA	0	0	4	0	0	2	1	4	17	7,342
3	Barang Thleak	HC	MPA	0	1	2	3	1	0	2	3	15	9,228
4	Chak Krei	HC	MPA	0	1	0	0	1	1	2	1	8	8,207
5	Kamrieng	HC	None MPA	0	1	0	1	0	1	4	3	12	7,124
6	Pich Chenda	HC	MPA	0	0	0	0	0	0	0	2	15	11,638
7	Serei Mean Chey	HC	MPA	0	1	3	2	0	2	1	3	11	11,264
8	Ta Krey	HC	MPA	0	2	2	0	0	1	2	2	10	8,383
Total:				0	6	12	9	2	10	13	19	99	71,402
Bat Dambang													
1	Trang	FDH	CPA+MPA	1	2	4	2	0	1	11	4	25	16,973
2	Chaeng Mean Chey	HC	None MPA	0	0	0	1	0	1	2	1	7	6,849
3	Chamkar Samraong	FDH	CPA+MPA	0	0	4	3	5	1	1	2	11	30,612
4	Chamlang Kouy	HC	MPA	0	0	0	0	0	0	12	2	12	4,640
5	Chheu Teal	HC	MPA	0	0	4	3	2	1	0	2	14	14,767
6	Chrey	HC	MPA	0	0	1	3	0	1	2	1	10	13,839
7	Kampong Lpov	HC	MPA	0	0	0	0	0	0	15	1	9	3,133
8	Kantueu II	FDH	MPA	0	0	5	5	1	2	5	4	23	17,734
9	Kdol	HC	MPA	0	0	3	1	4	0	0	1	7	8,399
10	Ou Mal	HC	MPA	0	0	3	1	2	1	0	1	10	9,834
11	Phlov Meas	HC	MPA	0	0	0	0	0	0	3	1	7	3,084
12	Phnum Sampov	HC	MPA	0	0	1	2	4	1	1	1	10	13,026
13	Rottanak	HC	MPA	0	0	3	1	4	0	0	2	12	19,708
14	Sam Lot	HC	MPA	0	0	0	0	0	0	15	2	12	7,479
15	Sdau	FDH	CPA+MPA	0	0	6	3	3	4	3	2	23	17,645
16	Sla Kaet	HC	MPA	0	0	3	1	4	0	0	1	3	7,903
17	Snoeng	HC	MPA	0	0	1	3	0	1	1	1	11	16,481
18	Svay Pao	HC	MPA	1	1	3	3	13	4	0	2	12	32,995
19	Ta Kream	HC	MPA	0	0	2	2	2	0	1	1	11	17,330
20	Ta Sanh	FDH	CPA+MPA	0	0	0	0	0	0	44	2	16	7,596
21	Traeng	HC	MPA	0	0	1	2	0	1	1	1	7	8,417

No	Facility Name	Type	Class	Dr	Ma	Nu2	Nu1	Mw2	Mw1	Others	Com Cov	Vil Cov	Pop. 04-05
22	Tuol Ta Aek	HC	MPA	0	0	5	0	3	2	0	1	5	17,291
Total:				2	3	49	36	47	21	117	36	257	295,735
Sangkae													
1	Voat Kor	HC	MPA	0	0	1	1	1	0	0	1	6	14,651
2	Anlong Vil	FDH	CPA+MPA	1	1	7	6	0	5	1	1	9	15,870
3	Kampong Preah	HC	MPA	0	0	2	2	0	1	1	1	6	8,907
4	Kampong Preang	HC	MPA	0	0	0	1	1	0	1	1	6	8,746
5	Koh Chiveang	HC	MPA	0	0	1	1	0	1	1	1	5	9,349
6	Ou Dambang I	HC	MPA	0	1	2	5	1	2	0	1	6	13,571
7	Ou Dambang II	HC	MPA	0	0	2	2	0	1	1	1	6	11,620
8	Peam Aek	HC	MPA	0	0	4	2	3	2	0	1	8	12,869
9	Preaek Luong	HC	MPA	0	1	4	3	2	1	0	2	10	13,479
10	Preaek Norint	FDH	CPA+MPA	0	1	9	9	8	0	2	1	10	12,367
11	Prey Chas	HC	None MPA	0	0	0	0	0	0	0	1	5	4,034
12	Reang Kerei	HC	None MPA	0	0	0	1	0	2	0	1	9	7,156
13	Roka	HC	MPA	0	0	0	2	0	1	1	1	6	7,985
14	Samraong Knong	HC	MPA	0	1	4	2	2	1	0	2	7	14,485
15	Ta Pon	HC	MPA	0	0	1	1	0	2	0	1	5	12,934
Total:				1	5	37	38	18	19	8	17	104	168,023
Total All				5	14	133	143	88	73	207	103	754	885,839

Source: MEDiCAM – Infrastructure - (http://www.medicam-cambodia.org/hsi/health_system/srch/index.asp?cboLn=6&cmdSearch=Search&cboCHName=&cboType=)

11.3 Deliveries in 2007 in the Province, by Operational District

OD	Deliveries	Deliveries at home		Deliveries	Total deliveries	Total deliveries
	at HC	By Health Staff	By TBAs	at RH	by Health Staff	by health staff and TBAs
Thma Koul	281	2041	1913	163	2485	4398
Mong Russei	279	832	1433	599	1710	3143
Sampov Luon	161	333	1169	167	661	1830
Battambang	603	2869	1455	1728	5200	6655
Sangkae	525	1344	1005	0	1869	2874
<i>Sub-total</i>	<i>1849</i>	<i>7419</i>	<i>6975</i>	<i>2657</i>	<i>11925</i>	<i>18900</i>

Source: MoH, Annual Statistics 2007

12 Education³

12.1 Schools, Classes, Students, Staff, for for all levels, for 2007/2008 by District

District	Number of Schools	Disadv. Schools	Number of Classes	Classes in Pagoda	Enrollment		Repeaters		Teaching Staff		Non-Teaching Staff		Total Staff	
					Total	Girl	Total	Girl	Total	Female	Total	Female	Total	Female
Banan	88	1	608	0	22,894	11,072	2,539	1,095	569	267	170	34	739	301
Battambang	76	0	1,048	2	40,597	19,061	2,324	797	1,506	950	235	114	1,741	1,064
Bavel	70	0	623	0	26,085	12,498	2,724	1,142	339	142	175	39	514	181
Ek Phnom	62	0	456	0	14,485	7,285	1,325	542	547	342	157	47	704	389
Kamrieng	49	2	350	0	13,206	6,139	1,087	480	243	110	63	16	306	126
Koah Kralar	39	2	282	0	11,793	5,527	661	295	122	39	57	20	179	59
Maung Russey	110	4	935	10	39,146	18,443	3,927	1,668	603	234	228	48	831	282
Phnom Preuk	28	1	254	0	11,138	5,261	1,181	570	161	64	39	7	200	71
Ratanak Mondul	45	3	286	0	10,332	4,864	971	406	162	79	87	19	249	98
Samlaut	47	0	315	0	10,545	4,912	909	381	203	61	58	10	261	71
Sampeuv Loun	15	1	148	0	6,428	2,963	298	148	119	39	44	2	163	41
Sangker	78	2	764	0	28,643	14,122	2,556	1,067	823	461	259	90	1,082	551
Thmar Kaul	68	3	682	4	29,785	14,557	2,352	959	678	362	170	40	848	402
Whole Province	775	19	6,751	16	265,077	126,704	22,854	9,550	6,075	3,150	1,742	486	7,817	3,636
- Urban Area	76	0	1,048	2	40,597	19,061	2,324	797	1,506	950	235	114	1,741	1,064
- Rural Area	699	19	5,703	14	224,480	107,643	20,530	8,753	4,569	2,200	1,507	372	6,076	2,572

³ All the data for section 12 comes from the Ministry of Education, Youth and Sport (MoEYS)

12.2 Characteristics of Schools and School Principals for 2007/2008 by Commune

Commune	Number of Schools				2 - Shift	Floating	Schools	Attached	Schools Without		Characteristics of School Principals (Incharge)			
	Pre-Sch	Primary	College	Lycee	Schools	Schools	in Pagoda	Pre-Sch	Water Sup.	Latrine	Avg. Age	Avg. Service	U.Sec+ Ed.	Female
Phnum Proek	0	1	1	0	1	0	0	0	2		42.9	10.5	1	0
Pech Chenda	0	5	1	1	6	0	0	0	4	3	37.4	11.3	4	0
Chak Krei	0	10	2	0	10	0	1	0	6	4	41.0	14.1	3	1
Barang Thleak	0	3	0	0	2	0	0	0	1	1	48.6	15.0	1	0
Ou Rumduol	0	4	0	0	4	0	0	0	2	1	34.6	14.5	1	1

12.3 Enrolment by Level of Education, 2006/2007 by Commune

Commune	School	Pre school		Primary School		Lower Secondary School		Upper Secondary School		Enrolment	
		Total	Female	Total	Female	Total	Female	Total	Female	Total	Female
Phnum Proek	1	0	0	763	371	0	0	0	0	763	371
Pech Chenda	7	0	0	2305	1030	428	190	0	0	2733	1220
Chak Krei	11	0	0	5172	2455	479	207	0	0	5651	2662
Barang Thleak	3	0	0	645	338	0	0	0	0	645	338
Ou Rumduol	4	0	0	1490	700	0	0	0	0	1490	700

12.4 Enrolment by Level of Education, 2007/2008 by Commune

Commune	School	Pre school		Primary School		Lower Secondary School		Upper Secondary School		Enrolment	
		Total	Female	Total	Female	Total	Female	Total	Female	Total	Female
Phnum Proek	2	0	0	642	326	57	27	0		699	353
Pech Chenda	7	0	0	2326	1118	556	262	68	24	2950	1404
Chak Krei	12	0	0	4801	2245	533	237	0		5334	2482
Barang Thleak	3	0	0	666	336	0	0	0		666	336
Ou Rumduol	4	0	0	1489	686	0	0	0		1489	686

12.5 Aspects of Enrolment for 2007/2008 by Commune

Commune	% Repeaters (Total)			% Over-age Enrollment (Total)			% Repeaters (Girl)			% Over-age Enrollment (Girl)		
	Primary	L.Sec.	U.Sec.	Primary	L.Sec.	U.Sec.	Primary	L.Sec.	U.Sec.	Primary	L.Sec.	U.Sec.
Phnum Proek	13.6	0.0	0.0	41.1	49.1	0.0	12.3	0.0	0.0	40.5	48.1	0.0
Pech Chenda	13.3	6.8	0.0	29.1	68.3	51.5	14.7	5.7	0.0	25.4	64.5	33.3
Chak Krei	10.5	1.7	0.0	20.3	70.2	0.0	10.7	1.7	0.0	19.9	70.0	0.0
Barang Thleak	14.6	0.0	0.0	21.6	0.0	0.0	14.6	0.0	0.0	23.5	0.0	0.0
Ou Rumduol	9.0	0.0	0.0	19.1	0.0	0.0	8.5	0.0	0.0	20.4	0.0	0.0

12.6 School Buildings for all schools in the District for 2007/2008, by Commune

Commune	Total Number of		Concrete/Brick Structure		Wooden Structure		Bamboo Structure		New Buildings		Buildings Without Good		
	Buildings	Rooms	Buildings	Rooms	Buildings	Rooms	Buildings	Rooms	Repaired	Constructed	Floor	Roof	Wall
Phnum Proek	2	15	2	15	0	0	0	0	1	1	1	1	0
Pech Chenda	8	36	5	26	3	10	0	0	0	2	3	2	2
Chak Krei	17	66	12	58	5	8	0	0	1	2	1	0	3
Barang Thleak	3	15	3	15	0	0	0	0	0	1	0	0	0
Ou Rumduol	4	14	2	6	2	8	0	0	0	0	0	0	0

12.7 Conditions of Classrooms and Existence of Separate School Office and Library, by Commune

Commune	Number of Class rooms	Number of Classrooms			Classrooms Without Good			Number of Furniture needed				Schools with Separate	
		in Pagoda	New Repaired	New Constr.	Floor	Roof	Wall	Desks	Chairs	Black-board	Teacher Table	Office	Library
Phnum Proek	11	0	3	5	7	5	0	50	5	5	8	2	0
Pech Chenda	28	0	0	10	6	4	4	82	88	4	13	3	0
Chak Krei	61	0	2	10	2	0	6	76	48	4	9	1	1
Barang Thleak	12	0	0	5	0	0	0	0	0	0	0	1	0
Ou Rumduol	13	0	0	0	0	0	0	0	0	0	0	0	0

12.8 Community Participation and Financing across all schools in the District for 2007/2008 by Commune

Commune	Parent Association				Comm. Teachers	Teaching Monks	PAP Fund (Riel)		Number of Schools Obtaining Funds from				
	Exists	Held Meet	Total	Female			per Student	per School	Sch. Income	Community	Gvt. For building	Abroad	IOs/NGOs
Phnum Proek	2	2	6	4	0	0	8,921	6,806,500	0	0	0	0	0
Pech Chenda	7	7	4	1	0	0	8,618	3,850,800	0	0	0	0	0
Chak Krei	11	11	3	1	0	0	7,249	3,941,270	0	1	0	0	0
Barang Thleak	3	3	3	0	0	0	8,572	1,843,000	0	0	1	0	0
Ou Rumduol	4	4	3	0	0	0	8,399	3,128,775	0	0	0	0	0

12.9 Percentage Student Flow Rates and Graduation by level 2006/2007, by Commune

Commune	Primary Level (Grades 1-6)			Lower Secondary Level (Grades 7-9)			Upper Secondary Level (Grades 10-12)			Successful Candidates		
	Promotion	Repetition	Dropout	Promotion	Repetition	Dropout	Promotion	Repetition	Dropout	Grade 6	Grade 9	Grade 12
Phnum Proek	64.1	11.4	24.5	0.0	0.0	0.0	0.0	0.0	0.0	50	0	0
Pech Chenda	74.0	13.4	12.5	82.2	8.9	8.9	0.0	0.0	0.0	156	50	0
Chak Krei	58.6	9.3	32.1	77.9	1.9	20.3	0.0	0.0	0.0	173	56	0
Barang Thleak	58.1	15.0	26.8	0.0	0.0	0.0	0.0	0.0	0.0	0	0	0
Ou Rumduol	67.4	9.0	23.6	0.0	0.0	0.0	0.0	0.0	0.0	85	0	0

13 Staff and Resources at the District

This chapter presents data from the District Information System, collected around the middle of 2009 unless otherwise specified.

13.1 District Councilors elected in 2009

Name	Sex	Year of Birth	Function	Phone
គង់ បែ	M	1953	Chairperson of The Council	012-441 331
ស្នូ សេង	M	1953	Councillor	012-665 371
ទួច សុគុណ	M	1951	Councillor	012-649 057
សារ៉ាយ ថូ	M	1951	Councillor	017-802 132
យី ធឿន	M	1966	Councillor	011-443 392
ភឿន ឡូត	M	1970	Councillor	012-638 259
ប៊ុត ប៊ុនធឿន	M	1965	Councillor	012-380 752
មួន គីរី	F	1980	Councillor	012-310 209
ដួង តេង	M	1953	Councillor	011-626 415
នួន ផុន	M	1951	Councillor	092-767 555
ឡុង ស៊ី	M	1948	Councillor	012-481 489
ដៃត ផង់	M	1957	Councillor	012-238 911
យិន សារឿន	M	1980	Councillor	017-654 597
ស្រង សារីន្ត	M	1967	Councillor	012-185 9971
ផ្នុង សារឿន	F	1959	Councillor	092-751 744

13.2 Committees of the Council

Please note at the time of producing the district data books the composition of the committees was not known for all district councils and therefore data were not available for 13.2.1, 13.2.2, 13.2.3.

13.2.1 Technical Facilitation Committee

13.2.2 Women's and Children's Affairs Committee

13.2.3 Procurement Committee

13.3 Board of Governors

Name	Sex	DoB	Function	Salary Level	Body	Phone
ស៊ុន ធឿន	M	1956	District Governor	ក.ព.១២	High Ranking Civil Servant	012-652 867
ប៊ុន ឆន	M	1955	District Deputy Governor	ខ.១.១	Medium Civil Servant	012-778 396
ឃឹម ស្រីន	F	1957	District Deputy Governor	គ.១.៤	Secretary	012-299 834
ឈឹម សំអន	M	1957	District Deputy Governor	ឃ. ១០	Administrative Agent	012-431 816

13.4 Offices under Sala Krong, Sala Srok and Sala Khan

Office Name	Chief		Deputy Chief		No. of Staff				Office Area (m2)	No of vehicle (public or program)	
					State		Contract			vehicle	moto
	M	F	M	F	M	F	M	F			
District/ Khan Cabinet	1	0	1	0	0	0	0	0	Borrow	0	0
Adminnistration Office	0	0	0	0	7	1	0	0	Borrow	0	0
Economy Office	0	0	0	0	3	0	0	0	Borrow	0	0
Social Affair Office	0	0	0	0	3	0	0	0	Borrow	0	0

13.5 Municipality/District/Khan line offices

Office Name	Chief		Deputy Chief		No. of Staff				Office Area (m2)	No of vehicle (public or program)	
					State		Contract				
	M	F	M	F	M	F	M	F		vehicle	moto
District/ Khan Police Headquarter	1	0	3	0	83	0	0	0	96	0	8
District/ Khan Military Police Headquarter	1	0	3	0	20	0	0	0	96	1	0
District/ Khan Military Subregion	1	0	2	0	104	0	0	0	108	1	2
Planning Office	1	0	1	0	1	0	0	0	Borrow	0	3
Rural Development Office	1	0	1	0	0	0	0	0	Borrow	0	1
Environment Office	1	0	0	0	0	0	0	0	Borrow	0	0
Education Office	1	0	1	0	140	76	0	0	104	0	0
District/ Khan Operational Office	3	0	4	2	0	0	0	0	Borrow	0	0
Agriculture Office	1	0	1	0	1	0	7	1	108	0	11
Social Affairs Office	1	0	1	0	1	0	0	0	Borrow	0	0
Culture Office	0	0	0	0	0	0	0	1	Borrow	0	0
Cult and Religion Office	0	0	1	0	0	0	0	0	0	0	0
Information Office	1	0	0	0	1	0	0	0	Borrow	0	0
Post Office	1	0	1	0	0	0	0	0	Borrow	0	0
Lan Management Office	0	0	0	0	1	0	0	0	Borrow	0	1

13.6 Properties and Equipment of District Administration

13.6.1 Buildings

Description	Unit	Number	Remark
Office building type			
- Concrete	building	1	
- Wood	building	0	
- Mixed	building	0	
Total floor space	m2		
- Concrete	m2	994	
- Wood	m2	0	
- Mixed	m2	0	
Building condition			
- Concrete	%	0	
- Wood	%	0	
- Mixed	%	0	
Office reserved land area	m2	0	
Total office land area	m2	5,950	

13.6.2 Means of Transport available at the District Administration

Description	Unit	Number	Remark
Vehicle (type, size and condition)	Vehicle	0	
Motorcycle (type, size and condition)	Motor	0	

13.6.3 Equipment in District Offices

Description	Unit	Number	Remark
Generator	per set	0	
Photocopy machine at the office	per set	0	
Private photocopy machine at the district town	place	2	
Telephone network (mobile line service)	network	0	
Telephone network (land line service)	network	0	
Fax (include Fax number)	per set	0	
Computer	per set	1	
Printer	per set	2	
Scanner	Per set	1	
Number of computers those can access Internet and email services in the municipality/ district/khan office (including the technical line offices (please provide the email address)	set	1	
Typewriters (including the technical line offices)	per set	0	
Staff of Municipality/district/khan office can use computer	person	2	

13.6.4 Equipment and facilities at the District Town

Description	Unit	Number	Remark
Availability of electricity at noon	Nr Hours	0	
Private internet and email services in the municipality/ district/khan town.	place	1	

13.7 Registered Revenue of the District Administration in 2008⁴

Sources of Revenue	Revenue Collecting Agency	Estimated annual revenue (In Riels)
Shopping Store	Provincial Taxation Branch	-
Patent Fee	Provincial Taxation Branch	-
Transportation Tax	Provincial Taxation Branch	-
Craft	Provincial Taxation Branch	-

13.8 Services in the District**13.8.1 Public Sector Services**

Type of Infrastructure/services	Unit	Number	
		Public	Private
Schools			
Pre-school	room	0	4
Primary School	room	104	0
Secondary school	room	20	0
High School	room	10	0
University	room		
Health			
Health post	place		
Health center	place	3	0
Referral Hospital	bed		

13.9 Civil Society Organizations active in the District**13.9.1 NGOs, Associations, Programs and Projects**

Name	Abbr.	Sector Activities	No. of Target Communes	No. of Target Villages	Office in District
NA	NA	គណនេយ្យ (ហិរញ្ញវត្ថុ)	0	0	Yes
NA	NA	សិទ្ធិមនុស្ស	0	0	No
ACED	NA	គាំទ្រគោលយោបល់យុវជន និងវិសហមជ្ឈការ	0	0	No
MAG	NA	បោសសំអាតមិន	0	0	No

⁴ Please note that the data in this table are at best estimates. If the table appears blank it does not mean there is no revenue, just that the data have not been recorded/entered.

Name	Abbr.	Sector Activities	No. of Target Communes	No. of Target Villages	Office in District
NA	ACLEDA	ឥណទាន (ហិរញ្ញវត្ថុ)	0	0	Yes
LWF	NA	អភិវឌ្ឍន៍សហគមន៍ដោយការផ្ទេរអំណាច	0	0	No
NA	NA	កម្មវិធីសិទ្ធិមនុស្ស	0	0	No
HALOTRUST	NA	បោសសំអាតមីន	0	0	No
NA	AHEAD	សុខាភិបាលកម្មវិធីអេដស៍	0	0	Yes
NA	NA	ឧបត្ថម្ភគ្រួសាររងគ្រោះដោយ សារមីន	0	0	No
NA	NA	ឥណទាន (ហិរញ្ញវត្ថុ)	0	0	No
CMAC	NA	បោសសំអាតមីន	0	0	Yes
NA	NA	កម្មវិធីអភិវឌ្ឍន៍តំបន់	0	0	Yes
NA	NA	ឥណទាន (ហិរញ្ញវត្ថុ)	0	0	Yes
VSO	NA	កម្មវិធីគាំទ្រវិស័យអប់រំ	0	0	Yes
NA	NA	ផ្សព្វផ្សាយតាមគោលដៅ	0	0	No
ADMAC	NA	អភិវឌ្ឍន៍កសិកម្មក្នុងតំបន់រងគ្រោះដោយសារមីន	0	0	Yes
NA	NA	អភិវឌ្ឍន៍វិស័យព្រះពុទ្ធសាសនា	0	0	Yes

13.9.2 Political Parties active in the Municipality, District and Khan

Name	Abbr.	Office in District
Cambodian People Party	CPP	Yes
FUNCINPEC Party	FUNCINPEC	Yes
Human Rights Party	HRP	Yes
NRP	NRP	Yes
SAM RAINSY Party	Sam Rainsy Party	Yes

13.10 Private Sector Organizations

13.10.1 Registered Companies in 2008, by District

On private sector at commune and/or district level	BAT	Banan	Thmor Kol	Battambang	Bovel	Ek Phnom	Moung Ressey	Rattanak Mondol
Businesses and Companies								
Number of registered agricultural enterprises (except family farms)	11	0	0	1	1	0	0	1
Number of registered shops, restaurants, transporters and other services	3,051	239	10	1,348	48	265	446	4
Number of manufacturing companies	580	60	65	41	35	24	52	3
Number of registered forestry enterprises	2	0	0	0	0	0	0	0
Number of registered mining companies	25	6	0	16	2	0	0	0
Number of financial institutions	77	3	8	26	3	10	9	3
Number of other commercial institutions	73	n/a	1	1	n/a	25	n/a	n/a
Estimated number of informal enterprises (not registered)	2,546	157	811	158	217	149	150	68
Employment								
Number of people employed in 2008 by companies or any other enterprises	14,736	785	4,153	5,364	272	103	959	54
Investment								
Amount invested in 2008 by private sector (\$)	34,728,121	5706166	3,345,745	16,457,255	948,167	205,159	619,669	45,163
Market								
Number of markets, operating at least weekly	142	8	29	18	4	6	37	7

Continue...

On private sector at commune and/or district level	BAT	Sangker	Samlot	Sampov Loun	Phnom Prek	Kamrieng	Koh Kralor	Ruk Kakiri
Businesses and Companies								
Number of registered agricultural enterprises (except family farms)	11	4	0	2	0	2	0	0
Number of registered shops, restaurants, transporters and other services	3,051	4	47	360	183	89	8	0
Number of manufacturing companies	580	51	80	9	75	6	28	51
Number of registered forestry enterprises	2	2	0	0	0	0	0	0
Number of registered mining companies	25	0	1	0	0	0	0	0
Number of financial institutions	77	3	3	4	3	1	1	0
Number of other commercial institutions	73	1	n/a	32	n/a	n/a	9	4
Estimated number of informal enterprises (not registered)	2,546	20	53	104	138	357	42	122
Employment								
Number of people employed in 2008 by companies or any other enterprises	14,736	2,160	0	122	61	500	0	203
Investment								
Amount invested in 2008 by private sector (\$)	34,728,121	1,147,600	15,470	5,381,205	73,087	95,789	87,646	600,000
Market								
Number of markets, operating at least weekly	142	13	8	3	2	2	2	3

Note: These data are not comprehensive as different companies and business are registered with different departments and not all departments were able or willing to provide detailed information. The number of informal enterprises reflects a rough estimate, made at provincial level and could not be verified.

Source: Unofficially collected at Provincial Level

13.10.2 Farmers in 2008, by District

Credit	BAT	Banan	Thmor Kol	Battambang	Bovel	Ek Phnom	Moung Ressey	Rattanak Mondol
Volume of credit provided to farmers in 2008 (\$)	13,707,032	719972	83,295	247,893	599,725	169,285	583,473	1,200,120
Number of farmers receiving credit in 2008	24,833	810	1,943	1,534	3,473	1,052	4,578	2,059
Volume of credit provided to companies in 2008 (\$)	19,557,000	2160000	840,000	100,000	815,000	10,000	2,400,000	960,000

Continue...

Credit	BAT	Sangker	Samlot	Sampov Loun	Phnom Prek	Kamrieng	Koh Kralor	Ruk Kakiri
Volume of credit provided to farmers in 2008 (\$)	13,707,032	4,533,000	350,480	2,067,035	676,134	428,191	1,979,179	69,250
Number of farmers receiving credit in 2008	24,833	1,250	1,393	1,281	1,619	1,016	1,185	1,640
Volume of credit provided to companies in 2008 (\$)	19,557,000	420,000	960,000	2,300,000	2,700,000	4,500,000	672,000	720,000

Note: Please note that these data are not necessarily complete or correct. The data are derived from government agencies at provincial and district level which used different recording systems, did not always have complete data or were, sometimes, less than willing to share their data.

Source: Unofficially collected at Provincial Level

SECTION E: POVERTY DATA

14 Data on Poverty

14.1 Predicted Poverty Rates for 2009, by commune

The **Predicted Family Poverty Rate** is based on a statistical model (robust multilevel mixed effect regression) at village level developed by the NCDD M&E Unit and uses CDB data for making an estimate of the predicted poverty rate (this is: *the portion of total families in the district or commune who are expected to be poor*) for the following year using current year data.

The basis for this predicted poverty rate also uses IDPoor (a project of the Ministry of Planning with technical assistance provided by GTZ) data

Commune	2004	2009
Phnum Proek	38.30%	25.30%
Pech Chenda	38.50%	29.40%
Chak Krei	43.60%	34%
Barang Thleak	38.50%	30.90%
Ou Rumduol	40.70%	27.30%

14.2 Poverty data from survey

14.2.1 Identification of Poor Households Program (IDPoor)

The Ministry of Planning IDPoor Program has developed standardized Procedures for Identification of Poor Households in rural areas. These Procedures are implemented using a participatory and consultative process by sub-national government structures and community representatives.

The IDPoor Program is managed by the Ministry of Planning (MOP), in cooperation with the Ministry of Interior's Department of Local Administration (DOLA). The program is supported by the Federal Republic of Germany, with technical assistance provided by German Technical Cooperation (GTZ). In 2009, AusAID also provided funding support to the Program.

Objective

The IDPoor Program aims to implement the Procedures for Identification of Poor Households in rural areas as widely as possible, in order to provide data on the level of poverty of areas and households that can be used by a large range of institutions and organizations for targeting services and development assistance to poor areas and poor households.

Coverage: During 2007, 2008 and 2009 the IDPoor Procedures have been implemented in 18 provinces (with partial or complete coverage), covering a total of around 7000 rural villages. The MOP and a number of NGO partners who are Health Equity Fund Operators have collaborated in collecting this data from different areas.

Categorization: Identified poor households are classified under two poverty categories: Poor Level 1 (very poor), and Poor Level 2 (poor). Households are classified based on data collected using a standard questionnaire, together with consideration by villagers of these households' special circumstances.

Further information: Please go to the IDPoor Program webpage at www.mop.gov.kh/Projects/IDPoor/tabid/154/Default.aspx

This District has not yet been covered by IDPoor